



The Diemaker's/ Diecutter's Source

The Diecutter's Source

Bar-Plate





At **Bar-Plate**, our reputation precedes us.

*With over 50 years in the business, and a customer base of over 7,000, I think it is safe to say that we are in it for the long haul. Our track record for on-time performance, high quality products, problem solving abilities and innovative new products has earned **Bar-Plate** a reputation for being the Diecutter's Source.*

Our commitment to you, our customer, is the reason we have been so successful over the past fifty years. We believe that your success equals our success. Being responsive to your needs and listening to your requests has inspired us to develop new products that are industry-specific and proven problem solvers.

Our goal of producing high quality products at a fair price and our just-in-time delivery has helped us to become one of the most efficient and proactive suppliers in the industry. Our customer service and sales representatives are just a phone call away. Technical assistance is always available, and freely given. If we can't solve your problem, or if we don't carry what you need, we can most likely direct you to someone who can.

A complete inventory of all of our products in a variety of sizes and thicknesses, and our ability to quickly respond to your needs, ensures your convenience and satisfaction. And, because we manufacture most of the items we sell, you are dealing directly with the source. This means rapid turnaround on special orders that are manufactured to your exact specifications. Stock items ship the same day. Just think, we carry the inventory, you save money and space.

*Thank you for making **Bar-Plate** the source for all your diemaking and diecutting needs.*

Sincerely,

Dennis Garrity
President

Table of Contents

Diecutting

Steel Diecutting Jackets

Standard Jackets [p.1](#) Boxmaker Jackets [p.1](#) Turnbuckle Jackets [p.2](#)
Cutting & Creasing Jackets [p.3](#) Impression Jackets [p.3](#)
Jacket Cleaners [p.3](#)

Steel Diecutting Plates

Plate Cleaner [p.3](#) Plate Protector [p.4](#) H.T.G.P. Plates [p.5&6](#)
Hardened Back-Up Plates [p.4](#) Thin Plates [p.6](#) Protection Plates [p.6](#)
Chase Plates [p.6](#)

Counterboard

Jute Plain [p.8](#) Jute Adhesive [p.8](#) Jute Kraftback [p.8](#)
Genuine Pressboard Plain [p.8](#) Genuine Pressboard Adhesive [p.8](#)
Genuine Pressboard Kraftback [p.8](#) Vulcanized Fibre [p.8](#)
Stereo Embossing Board Plain [p.8](#) Stereo Embossing Board Adhesive [p.8](#)
Stereo Embossing Board Kraftback [p.8](#)

Matrix

Metal-Based Matrix [p.9](#) Marathon Matrix VF [p.10](#) Plastrix [p.10](#)
Matrix Tools [p.10](#)

Makeready Supplies

Vinyl & Mylar [p.11](#) Carbon Paper [p.11](#) Carbon Paper Sheets [p.11](#)
Footprinting Foil [p.11](#) Shim Packing Paper Roll [p.12](#)
Shim Packing Paper Sheets [p.12](#) Tympan Paper Rolls [p.12](#)
Tympan Paper Sheets [p.12](#) Dispenser Cutters [p.12](#)

Makeready Tape Products

Stiki-Tape [p.13](#) Stiki-Tape Dispenser [p.13](#) Makeready Tape [p.14](#)
Makeready Tape Dispenser [p.14](#) Adhesive Steel Shim Tape [p.15](#)
Double-Coated Tape [p.15](#)

Makeready Hand Tools

Score Cutting Knives & Blades [p.17](#) Skiveready Knives & Blades [p.18](#)
Sample Maker's Tools [p.18](#)

Makeready Tools

Low Profile Adjusto Guides [p.19](#) Adjusto Guides [p.19](#)

Blanking Tools

Joggers [p.19](#) Hold Down Assemblies [p.20](#)

Diecutting Machines

Handy Press [p.41](#) Swing Arm Press [p.41](#) Tippmann Press [p.42](#)

Diemaking

Nicking Tools

Nicking Chisels & Tips [p.33](#) Quicknick Grinder [p.33/34](#)
Grinder Wheels [p.34](#)

Quoins

Quoins & Keys [p.16](#)

Stripping Equipment

Air Hammers CP [p.21](#) Air Hammers IR [p.21](#) Balancer [p.22](#)
Muffler [p.22](#) Chisels [p.21](#) Hand Stripping Hammers [p.22](#)
Stripmates [p.23](#)

Diemaking Supplies

Steel Rule [p.24](#) Ejection Rubber [p.25](#) Dieboard [p.26](#)
Adhesives [p.26](#)

Diemaker's Tools

Diemaker's Hammers [p.27/28](#) Rule Setters [p.28](#) Rule Tampers [p.29](#)
Rule Tweakers [p.29](#) Micrometer Adapter [p.30](#) Die Board Gauge [p.30](#)
Rule Pullers [p.31](#) Wagner extractor 2000 & 3000 [p.32](#)

Diemaker's Tables

Bases [p.35](#) Tops [p.35](#) Side Tables [p.35](#)

Rule Processing Equipment

Cutters/Notchers/Miterers, Benders & Parts [p.37/38](#)

Diemaking Equipment

Jig Saws, Blades & Parts [p.36](#)

Broaching Equipment

Hand Broaching Equipment [p.39](#)
Semi-Auto Broaching Equipment [p.40](#)

Miscellaneous

Adjusto Guides [p.19](#) Corner Plates [p.44](#) Mitutoyo Tools [p.42](#)
Starrett Tools [p.43](#) Carbide Saw Blades [p.44](#)
E-Z Reacher [p.44](#) Die Storage Systems [p.45](#)

*THE
Diecutter's Source*

Bar-Plate

Steel Diecutting Jackets



Shirrtail Jackets

Bar-Plate is the largest manufacturer of Steel Diecutting Jackets in the world. We have Standard 20 RC and Boxmaker 35 RC grades of steel in stock. Our superior quality stainless steel in multiple thicknesses, along with our extensive files of OEM drawings and specifications, ensures that you get the best diecutting jacket available. That's why we're No. 1. In our special manufacturing process we reverse and forward roll all our jackets prior to making the gripper bend. This allows the leading edge of the jacket to lay FLAT against the cylinder and gives you a concentric shape.

Our huge inventory assures you of same-day shipment. All of our Shirrtail Jackets come with **Bar-Plate's** replaceable Shirrtail.

If you require a custom jacket, call us. We have thousands of drawings on file, or we can easily manufacture a jacket to your specifications. You supply the dimensions and we supply the drawing.

We have jackets for HEIDELBERG, MIEHLE, MILLER, KELLY, ATF, JOHANNESBURG, LITTLE GIANT, L&M and many more in stock. Flat Jackets are also available.

**Bar-Plate is
the largest
manufacturer
of jackets in
the world.**



▶ **Our huge
inventory
assures you
of same-day
shipment.**

Steel Diecutting Jackets

Snap-On, "Z" Bar & Clamshell Jackets



If you have a Heidelberg Windmill, "T," "TP" or "GT," Kluge or C&P, we have the jacket for you. We carry Snap-On Jackets for all three presses in a variety of sizes. Simply snap-on our preformed jacket; no adjustment is necessary. The jacket is held in place with the preformed edges and the tensile pressure incorporated into our design.

Our NEW "Z" Bar Jacket is expressly designed for use on presses that still operate as printers or where the bails are still attached to the press. The bails hold the "Z" bars in place which, in turn, hold the cutting plate on the platen. .030" and .060" are the most common sizes and are in stock.

A large variety of other thicknesses is available.



8" x 10," 10" x 15" & 13" x 18" jackets in many thicknesses are in stock and ready for shipment...



Turnbuckle & Bar-Turnbuckle Jackets

All of our Turnbuckle and Bar-Turnbuckle Jackets are made from our superior 35 RC stainless steel. Our reinforced turnbuckle tabs and welded bars or tabs ensure you of a tight fit and long lasting wear. In-stock jackets are available for Miehle, Miller, Babcock, L&M and Heidelberg.

The Turnbuckle Jacket is designed to work on both single- and two-color presses. With its machined bars, the Bar-Turnbuckle Jacket is primarily used on two-color presses, but can also be specially made to work on single-color presses to extend the cutting area of the press.

▶ **We also carry a full line of Turnbuckle accessories.**

▶ **In addition, we can custom-make a jacket to fit any requirements.**

70 RC Process

Bar-Plate's special 70 RC Hard Chrome Process gives you a micro-thin layer of hard chrome and brings the surface hardness to 70 RC. The hard chrome layer helps to resist cutting and nicking of the jacket surface. Jackets treated with this process have a smoother, blemish-free surface for an extended period during normal use.

Steel Diecutting Jackets

Cutting & Creasing Jackets

If you have a Miehle 29, 49, 61, 70, 72 or 76, we have the jacket for you.

Bar-Plate uses stainless steel with a finished hardness in excess of 35 RC. Our bars are riveted-on and finished-ground. Thicknesses from .062" to .125" are available. The most common thickness is .083"

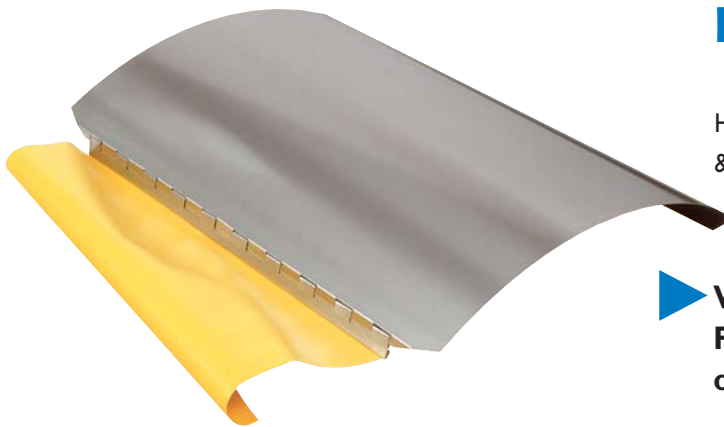
We can manufacture a jacket to your specifications or assist you with the dimensioning of the jacket. We'll send you a compatible drawing and all you have to do is fill in the dimensions.



We make jackets for all MIEHLE, MILLER, L&M, VIKING, HEIDELBERG and other regular and converted presses.



**Riveted Bars
and Finished
Ground**



Impression Jackets

Bar-Plate stocks Shirttail Impression Jackets for KOR HEIDELBERG offset presses. Our standard thicknesses are .016" & .023". Other thicknesses are readily available upon request.

Jackets are produced from 35 RC stainless steel and each comes with our replaceable Shirttail.

▶ **We can manufacture Impression Jackets, Filler Jackets and special jackets for all offset presses.**

Cutting Plate Cleaner II

A diecutter's wish come true! **Bar-Plate** offers liquid phase industrial cleaner that leaves no residue on the jacket surface. Our cleaner is ozone/environmentally friendly and has a low hazard rating, which makes it easier to use than the standard industrial cleaning chemicals on the market today.

Cutting Plate Cleaner II cleans better than type wash, blanket wash or font wash. It dries quickly and can be used on any cutting surface. Our cleaner is perfect for removing residual adhesive from Counterboard and Matrix. Cutting Plate Cleaner II ships via normal UPS/RPS or truck with no special labeling requirements. Available in one-, five- and 55-gallon containers.



Steel Diecutting Plates



Plate Protector

Bar-Plate's new Jacket, Plate and Metal Protector will ensure that no matter what the operating environment is, your jackets and plates will never rust, corrode or tarnish. This innovative product preserves metal surfaces with no oily mess and is readily removable with Plate Cleaner II. Overnight and weekends will no longer be a problem on your equipment. Eliminate the need to remove rust and corrosion and save time and money. Plate Protector is available in 22 ounce spray bottles or 1 gallon cans.



Backup Plates

Backup Plates, manufactured from our superior quality stainless steel, are available to fit most presses. Need a special size? It's no problem for **Bar-Plate**. We have multiple thicknesses just waiting for your specific order. Our Backup Plate material has a hardness of 35 RC, ideal for providing a solid surface for all platen and flatbed presses.

This versatile material has many other uses specific to our industry, i.e., Cutting Plates, Chase Plates, Protection Plates, Top Plates and Shim Plates to accommodate different rule heights.

▶ **Heidelberg Backup Plates
in stock!**



**Thicknesses available: .012", .015", .016", .020", .025", .030", .035", .040",
.050", .055", .060", .080", .090" & .125"**

Steel Diecutting Plates

BOBST® Plates

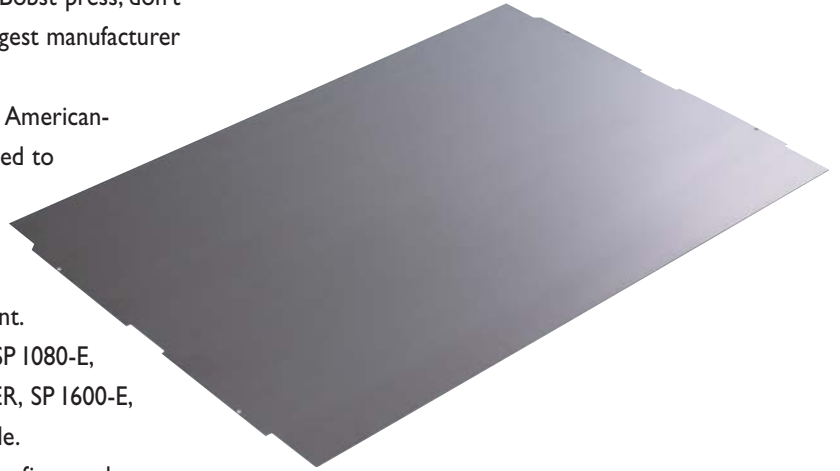
When it comes to Cutting & Creasing Plates for your Bobst press, don't settle for anything less than the best. **Bar-Plate** is the largest manufacturer of replacement Plates for Bobst® presses in the US.

Our plates are manufactured from special high-carbon American-made steel, which is hardened, tempered, ground and polished to produce a superior quality plate.

We maintain tighter specifications than those published by the IADD.

We have Cutting Plates in stock for immediate shipment. Stock plates for SP 102-E, SP 102-CER, SP 130, SP 900-E, SP 1080-E, SP 1120-E, SP 1260-E, SP 126-BMA, 1420-E, SP 142, SP 142-ER, SP 1600-E, SP 1575-EEG, SPO 1600, SP 1650 and SPO 2000 are available.

Special Bobst® Plates can be manufactured in as little as five weeks.



The tightest specifications in the business.



	Bar-Plate
Length	+-.005"
Width	+-.005"
Thickness	+-.002"
Parallelism	within +-.0015"
Flatness	within +-.015"
Hardness	47-52 Rockwell "c" scale
Surface	RMS 20-32

Manufactured from special high-carbon, American-made steel, which is hardened, tempered, ground and polished to produce a product of superior quality. **Bar-Plate** quality.

70 RC Process

Extend the life of your Bobst Cutting Plate with **Bar-Plate's** special 70 RC Hard Chrome Process that gives your cutting plate a micro thin layer of hard chrome and brings the surface hardness to 70 RC. The hard chrome layer helps to resist cutting and nicking of the plate surface. Plates treated with this process have a smoother, blemish-free surface for an extended period during normal use.

Countersinking, as well as applying our 70 RC process to both sides of the plate, extends the life of the plate and allows you to work and turn the plate—just like rotating your tires!

Steel Diecutting Plates

All plates are inspected for hardness, flatness, parallelism, size and machining.



Cutting and Creasing Plates (H.T.G.P.)

Bar-Plate manufactures and often stocks plates for BOBST®, BRAUSSE, C&P, CHAMPLAIN, CONDES, CONSOLIDATED, CROSLAND, HEIDELBERG, IMPERIA, KEMPSMITH, KLUGE, MERCURY, PRECO, S&S, SCHWABE, STANDARD, THOMSON-NATIONAL, WUPA and ZERAND.

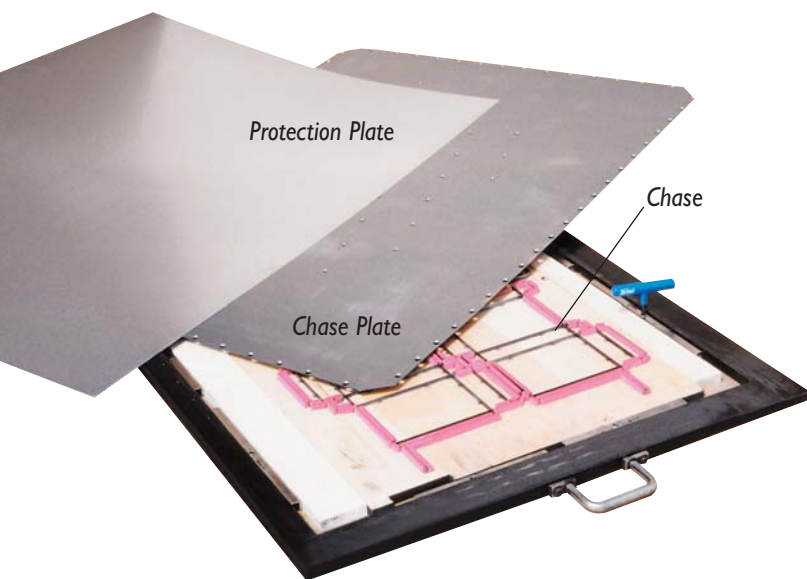
All of our H.T.G.P. Cutting Plates are manufactured from American-made high-carbon steel, which is hardened, tempered, ground and polished. Our standard hardness is 47-52 RC. Our plates are available in all sizes for all presses in thicknesses from 1/16" to 1/2".

Bar-Plate has complete facilities to machine your plate to exacting specifications. Quality control is strict. All plates are inspected for hardness, flatness, parallelism, size and machining prior to shipment. Our large inventory of stock plates means we can ship many orders the same day we receive them. Non-stock plates require about five weeks to complete.

▶ **We now stock 1mm thin/top plates for specific Bobst machines.**

Custom machining of your Cutting Plates

Bar-Plate has the capabilities to custom machine any metal cutting surface. We can LASER, WATERJET, CAD/CAM, or simply DRILL and TAP any plate to your specifications. Centerline systems, Quick Lock-up, and many others are quickly duplicated.



Bobst® Protection, Chase Plates and Chases

We now have Protection Plates available for Bobst® Presses. Both aluminum and phenolic plates are in stock. Call for pricing.

We can fabricate a Chase Plate to meet exact OEM specifications. **Bar-Plate** has both new and used Bobst® Chases available. Call for pricing.

Counterboard



Our large, in-stock inventory allows us to accommodate your just-in-time orders. We will ship the same day we receive your order.

Our standard sheet size of 24" x 36" fits most press applications, but special sizes are available upon request. Our wide range of calipers—.010" to .030"—for Jute Tag and Genuine Pressboard, plus .032" to .040" in Vulcanized Fibre, simplify even the most complex scoring/creasing requirements. Jute Tag is also available in .008" caliper.

Our Jute Tag, Genuine Pressboard and Stereo Embossing Board can be ordered plain, with an adhesive backing or with a kraft backing. Please note: Vulcanized Fibre comes plain only.

Our Adhesive and Kraftback Counterboard come in a finished sheet size of 19" x 35" or 23" x 35" in calipers of .014" to .036".

Stereotype Embossing Board comes in a standard size of 20" x 20" and either .030" or .060" thickness. 20" x 30", 20" x 40" and 20" x 60" sheets are also available. Adhesive and Kraftback Stereo Embossing Board come in 19" x 19", 19" x 29", 19" x 35", and either .036" or .066" thicknesses.

Bar-Plate has the world's largest and most diversified inventory of Counterboard in stock. Every sheet is stamped to specific thickness, and our tolerances of .0015" are the best in the industry. We super calander every sheet to achieve a smooth, even surface. Best of all, there is no minimum quantity. You choose the method of application—double-coated tape, adhesive-backed or glue.

Unlike Matrix, which only offers set sizes from which you need to choose the best fit for your application, Counterboard gives you a custom counter that will fit every application. You can cut and form to meet the diverse and demanding requirements of any substrate you're processing, and you can achieve infinite channel width and depth.

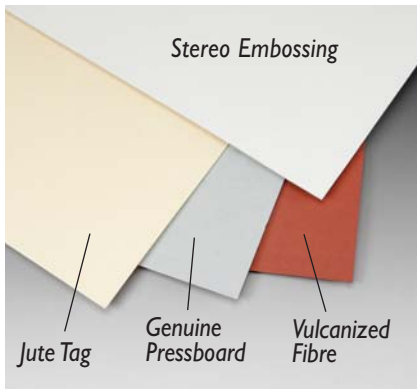
We have Jute Tag, Genuine Pressboard, Vulcanized Fibre and Stereo Embossing Board in stock and ready for shipment. Every sheet of **Bar-Plate** Counterboard is stamped prior to shipment to identify its thickness.

WE STAMP THE EXACT CALIPER ON EACH SHEET



▶ **Special calipers are available upon request.**

Counterboard



...All in stock and ready for shipment.

Jute Tag

Manila-colored Jute Tag, with its medium hardness, is ideally suited for short run applications. Its fibrous makeup allows for easy cutting and chamfering, which speeds up your makeready. Jute Tag is available in Plain, Adhesive or Kraftback versions.

Genuine Pressboard

Pearl gray-colored Genuine Pressboard, with its hard surface, is best suited for medium length runs. When cut, its hard edge gives you a clean square channel that helps define the crease or score. Genuine Pressboard is available in Plain, Adhesive or Kraftback versions.

Vulcanized Fibre

Red in color, Vulcanized Fibre, with its extra hard construction throughout, is the only choice for long runs or for when you're using recycled board as your substrate. It features unmatched performance when you need million-plus impressions. Many of our customers prefer Vulcanized Fibre to phenolic counters.

Stereotype Embossing Board

White Stereotype Embossing Board is specifically designed to be the economical alternative to two-plate embossing and debossing. The expense of brass, steel and composite plates is prohibitive on some small runs, but with our Stereotype Embossing Board, you can eliminate one-half of the set and make your own counter. It's easier and safer to use than "Pour a Counter" and gives superior results.

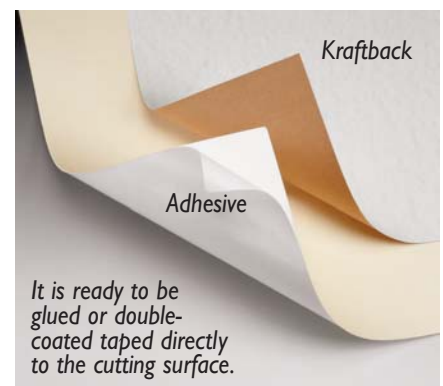
Stereotype Embossing Board is available in Plain, Adhesive or Kraftback versions.

Adhesive Counterboard

Our exclusive Adhesive-Backed Counterboard is available in Jute Tag, Genuine Pressboard and Stereotype Embossing Board. A superior quality, pressure sensitive adhesive is already on the Counterboard. Just peel off the backing and apply the Counterboard directly to the cutting surface. The adhesion is quick, simple and precise. Channel cutting, stripping and skiving are easily accomplished. **Bar-Plate's** Adhesive-Backed Counterboard provides you with both time and money savings by reducing makeready time.

Kraftback Counterboard

Our Kraftback Counterboard is available in Jute Tag, Genuine Pressboard and Stereotype Embossing Board. The kraft paper is already laminated to the Counterboard and is immediately ready to be glued to the cutting surface. This helps to save time and money by reducing makeready time.



Matrix



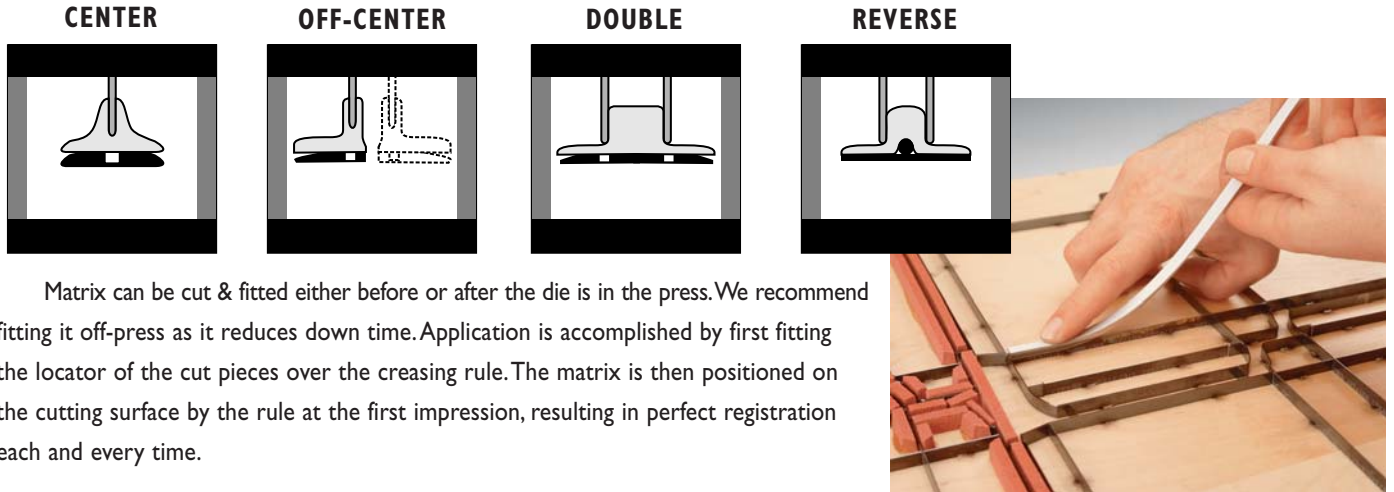
**CHANNEL®
CREASING
MATRIX, INC.**

Matrix provides uniform, well-defined creases throughout the run. It is also the easiest possible way to ensure accurate register between the creasing rule and the creasing channel. It's quick and easy, which translates into reduced makeready time, better creases, faster run time and increased profits.

Channel Creasing Matrix's close manufacturing tolerances and use of the highest quality materials ensure excellent performance and long shelf life. A specially-formulated adhesive guarantees that the matrix will stay in place, yet be easy to remove.

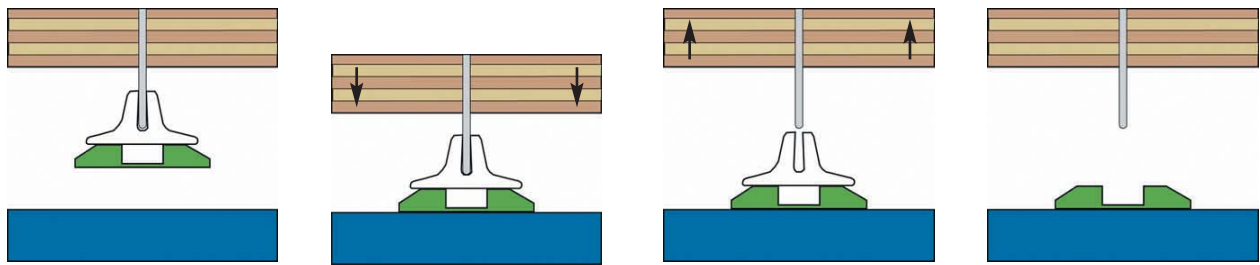
Matrix is perfect for almost any creasing operation—Platen, Cylinder, Roller and Bobst® style presses—and on a variety of materials—paper, card & cover stock, board and even corrugated. Bar-Plate carries all four matrix profiles and three distinct types to cover all applications.

All products made by Channel Creasing Matrix are made in the USA, so information, technology and answers are only a phone call away.



Matrix can be cut & fitted either before or after the die is in the press. We recommend fitting it off-press as it reduces down time. Application is accomplished by first fitting the locator of the cut pieces over the creasing rule. The matrix is then positioned on the cutting surface by the rule at the first impression, resulting in perfect registration each and every time.

A QUALITY CREASE IS AS EASY AS 1-2-3-4!



▶ Channel's "self locating system" makes it a snap!

Metal Based Matrix

In use since 1964, Metal Based Matrix is the only US-made matrix on the market. The original product is made to exacting specifications using only the finest materials and up-to-date processes. It is made with a plastic profile extruded into a thin steel base, allowing for a taper to be put on the edges, resulting in a smooth flow of paper over the matrix. The color-coded, thermal-bonded locator leaves no messy residue when removed and is quickly recognized for repair or replacement.

The strong adhesive base is designed to adhere to clean, dry plates with no extra taping and will not migrate during the run. Offered in a variety of sizes and shapes, Channel Creasing Matrix can be easily adapted to fit your application.



Matrix

Marathon Matrix VF

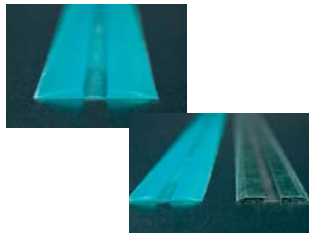
Marathon was developed to help obtain very high speeds on Bobst®-style presses while maintaining sharp, well-defined creases—even on long runs. Because it is a film-based matrix, no rule height adjustment is necessary, meaning it can also run on platen and cylinder presses. The use of “VF” vulcanized fibre makes this product unique and ensures long run capability. “VF” is far superior to the normal fiberboard matrix that is available today.

Due to its lower profile, Marathon Matrix VF can be used for cut-crease applications. As with our metal based matrix, the four quick and easy steps to a faster makeready apply. A variety of sizes and styles are readily available.



NEW!! Plastrix

PLASTRIX is a revolutionary one piece matrix made from an exclusive POLYMER formula so there is no possibility of it delaminating or separating. PLASTRIX is impervious to moisture, its non-migrating adhesive stays put for the duration of the run and its thermally-bonded locator with built-in registration tab ensures pinpoint registration. The unique crease profile reduces draw on the material being scored. And, there's no messy adhesive residue to clean up.



Best of all, PLASTRIX requires no taping or ramping. Conventional matrix has a hard edge that requires you to tape the trailing cross machine direction edge to prevent jamming.

PLASTRIX is available in center, off-center, double-score and reverse-crease profiles, in both 1/2” and 1/4” wide formats. Available in a wide variety of sizes, PLASTRIX is color coded for easy recognition on and off the press.



Matrix Bench Press

The Matrix Bench Press is used in applications using a multiple-up die. It allows accurate and repetitive miter length cuts time after time, speeding up the makeready process and saving money!

Matrix Cutting Tools

Bar-Plate carries a wide variety of hand cutters for cutting matrix and rubber. The yellow-handled, Multi Cutter Jr., is a light-weight, low cost cutter that uses replaceable blades and a hard plastic anvil. This tool is ideal for straight or angle cutting of rubber and matrix.

Also available is the “Dolphin” Cutter, named for the “fins” on each side of the blade. These fins have angle markings engraved into them, allowing for precise lineup to achieve exact angle cuts.

Our traditional Straight Cut unit has a brass anvil and can be used for matrix and rubber.



Makeready Supplies



**All sizes are in stock and ready for delivery.
All it takes is a call from you.**

Vinyl & Mylar

Bar-Plate offers the highest quality Mylar and Vinyl for use in the diemaking and diecutting industry. Produced to our tight specifications, **Bar-Plate's** Vinyl and Mylar are dimensionally stable. Accept no substitutes!

Strike and/or transfer sheets are an important part of the diemaking, diecutting and printing process. With a strike sheet, it is possible to do the preliminary printing operations before diecutting to ensure that the print-to-diecut register will be perfect. You can also use a strike sheet as a jig master by applying it to the dieboard prior to jiggling.

The use of Mylar and Vinyl as makeready sheets is increasing in popularity in our industry. Precise thicknesses and three different roll sizes give you the greatest degree of flexibility possible.

Mylar's matting on one side and polish on the second side provide great flexibility. Mylar is the best there is for use on a plotter or for a carbon transfer. Die rub-offs come out perfectly every time.

M/P MYLAR IS AVAILABLE IN .004" AND .008" THICKNESSES; M/M VINYL IN .008" THICKNESS. BOTH COME IN 36", 45" AND 54" WIDE BY 100 FEET LONG ROLLS.

Carbon Paper

Bar-Plate's reproduction Carbon Paper is designed specifically for steel rule diemakers and diecutters. We use only the highest quality kraft paper and sensitive wax inks to assure you of a clear, sharp and accurate reproduction.

Bar-Plate's "4-4-2" gives you four roll widths, four roll lengths and two thicknesses from which to choose. Our fine line .002" has roll lengths of 300 feet and 3000 feet. Our super line, multi-use carbon is .005" and has roll lengths of 150 feet and 1500 feet. In stock roll widths are 24", 36", 45" and 54".

When used with our Dispenser Cutter, **Bar-Plate's** Carbon Paper on rolls helps to reduce waste. Carbon Paper Sheets are also available. Give us a call for pricing.



A large variety of thicknesses, lengths and widths is available for immediate shipment.



NEW!! Footprint Foil

Arguably the easiest way to reduce makeready time is to Footprint your press. Eliminating the non-controllable variables on your press, such as upper platen, bed and plate thickness variances allows you to makeready for only the die height. Why patch up the same low spot time after time when you can footprint it and forget about it.

Bar-Plate's Footprint Foil comes in rolls and sheets. .001" & .002" x 36" x 50 foot rolls. .001" & .002" x 24" x 36" sheets.

This time and money saving product is in stock and a must for all serious diecutters.

Makeready Supplies

Shim Packing Paper

Shim Packing is synonymous with many words and terms, but it is primarily associated with makeready. **Bar-Plate's** Shim Packing Paper has multiple uses and is often used as a spot sheet, top sheet, packing sheet, overlay and/or underlay sheet, hanger sheet, leveling sheet or filler sheet. Our three thicknesses and three roll widths give you the variety of alternatives you need to achieve an accurate and precise makeready.

Our Shim Packing Paper is specifically designed for diecutting. Its micro-metrically precise caliper, great hardness, durability and strength ensure the ultimate in a kiss impression. This gives you cleaner cutting and creasing and longer wear of the knives, thereby reducing down-time. Makeready tape can easily be applied to Shim Packing Paper.

The ability to choose from our three thicknesses of .002", .003" & .006" when making ready your press allows you to achieve a precise, even and balanced cutting solution. Common roll widths of 36", 45" and 54" are available in all three thicknesses.

When used with our Dispenser Cutter, **Bar-Plate's** Shim Packing Paper on rolls helps to eliminate waste—tear off only what you need; the balance of the roll stays neat and ready for your next application.



Treated Tympa Paper

Just like our Shim Packing Paper, **Bar-Plate's** Tympa Paper has multiple uses. Its treated surface is designed to repel moisture and is impervious to most plate and blanket washes. This high density paper comes in .006" caliper, with roll widths of 36", 45" and 54".

Bar-Plate's Shim Packing Paper and Treated Tympa are also designed to be used in such printing and diecutting makeready processes as Letterpress, Lithography, Offset, Gravure and Flexography.

Shim Packing Paper and Tympa Paper are also readily available in sheets. Pre-cut top sheets and other speciality sizes can be supplied.



**Specialty sizes can be supplied...
just call us with your requirements.**



▶ **24", 36", 45" & 54" sizes
are readily available.**

Dispenser Cutter

Bar-Plate's multifaceted Dispenser Cutter can stand or hang—it's up to you! It is expertly engineered—all steel construction, easy to load, simple to operate, a space saver, a time saver, and a die saver. What more can we say! The Dispenser Cutter works with Carbon Paper, Shim Packing Paper, Tympa Paper and many other roll products. The clamp/tear bar keeps the product neat and prevents unrolling as the roll is torn.

Makeready Tape Products



NEW!! Stiki-Tape

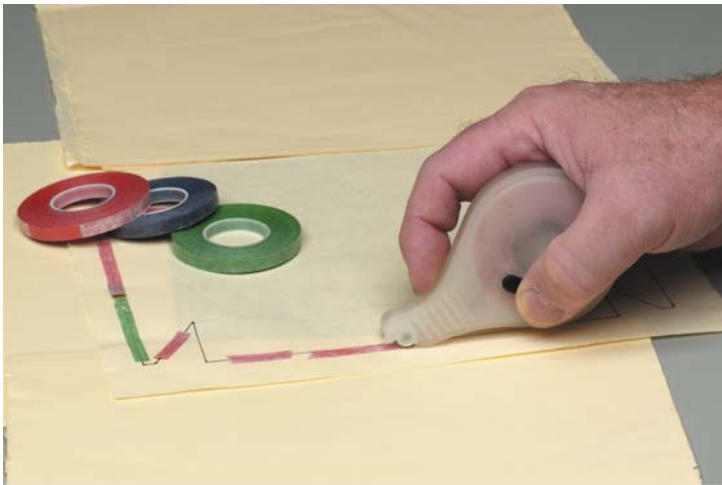
Bar-Plate's new Stiki-Tape pressure sensitive Make Ready Tape (spot tape, or patch-up tape) is the best value available today. You get more tape at less cost. Color coded for ease of recognition and available in three sizes. All the rolls are 6mm wide and 108 feet long. .001" x 6mm x 108' Grape; .002" x 6mm x 108' Green; .003" x 6mm x 108' Orange.

Our Stiki-Tape comes in boxes of 10, but can be purchased as individual rolls. Quantity discounts are available.

NEW!! Stiki-Tape Dispenser

Bar-Plate's new pressure sensitive Tape Dispenser was designed with you in mind. Made with polycarbonate resin (Lexan) for durability with a simple design that's easy to load and use. The transparent casing allows you to see the color (thickness) of the tape. It's comfortable shape fits the palm of your hand with the thumb brake easily accessible. The pressure roller applies the tape in a straight and smooth line and the serrated blade makes cutting a snap. This new dispenser protects the tape from unwanted dirt, moisture and edge damage and allows you to use the full roll.

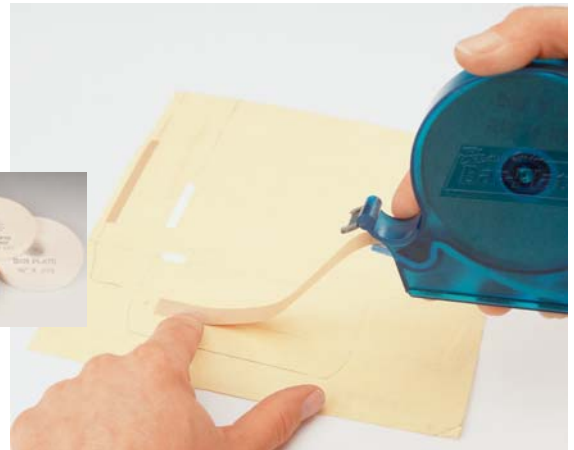
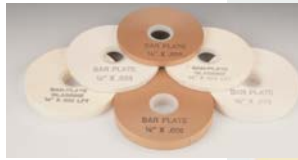
Our new dispenser is designed for use with either the Stiki-Tape brand or the Profi-Tape brand.



Makeready Tape Products

Makeready Tape

Bar-Plate's Makeready Tape is uniquely formulated to meet the specific needs of the diecutting industry. The Makeready Tape's narrow widths of 1/4" and 1/2" make it best-suited for cutting and creasing makereadies. When it's necessary to compensate for uneven rule height or variations in the cutting surface, the ability to use differing thicknesses of shimming material is critical to your success. **Bar-Plate** provides this ability with its Paper Makeready Tape, which is available in three thicknesses and two widths. Thicknesses of .0015", .003" and .006" in either 1/4"- or 1/2"-wide rolls are readily available for same or next day shipment.



The proper tape thickness is critical when building up areas that have failed so as not to hamper the adjacent cutting or creasing rules. **Bar-Plate's** Transparent Glassine .0015" is perfect for kiss cut operations, our Translucent White .003" makes fast work of rule and plate imperfections, and our Opaque Natural Kraft .006" is the only answer to press variations of significant magnitude.

**DON'T BE FOOLED BY CHEAP IMITATIONS!
BE SURE YOUR MAKEREADY TAPE IS STAMPED
WITH THE BAR-PLATE NAME!**

Bar-Plate's Makeready Tape is manufactured from quality hardwood to guarantee that it will hold up under the constant pounding of the diecutting process, resulting in long-lasting, money-saving makereadies.



Makeready Tape Dispenser

The **Bar-Plate** Makeready Tape Dispenser is a NEW and long-awaited product. All too often, valuable time and tape have been lost through the use of loose rolls. **Bar-Plate's** universal new Makeready Tape Dispenser not only solves these problems, but gives you the option of having dry or pre-wetted tape right at hand.

Our lightweight, polycarbonate dispenser has the capacity to deliver 1/4"- and 1/2"-wide tape in .0015", .003" or .006" caliper, either wet or dry. The quick change side plate makes adaptation for the two different widths a breeze.

A refillable water reservoir in the base of the dispenser provides the moisture necessary to activate the tape. For tape that is precisely cut and ready for convenient, accurate and immediate application, simply pull

the dispensed length down across the moistened wick and then up across the perforating blade. Best of all, the Makeready Tape Dispenser eliminates the paper cuts that came hand-in-hand with the old lick n' stick method.

For conventional users of Makeready Tape, just pull the tape straight out and up to avoid contact with the moistened wick, tear off the tape and apply in your normal manner.

No matter which method you use, **Bar-Plate's** Makeready Tape Dispenser protects your tape from excessive moisture, which can cause blocking, and eliminates the risk of "run-away" rolls. And, the dispenser's visible blue color makes it much less likely to be lost or left in the press.



Makeready Tape Products

Adhesive Steel Shim Tape

When paper tape just won't do, pressure sensitive, Adhesive Steel Shim Tape is the answer. If you need to level a plate or press, or if you makeready behind the die, this is the tape to use.

Bar-Plate's Adhesive-backed Steel Shim Tape conforms to the highs and lows of press beds and helps to eliminate the variations in rule height better than any other product on the market. What's even better, it's permanent!

If you're "footprinting" your press, this tape is perfect for even the small areas, and gives you superior, long-lasting performance. We've even used this tape to level a press and as a stop block shim and bearer repair. It's extremely versatile and a must for every diecutter's toolbox.

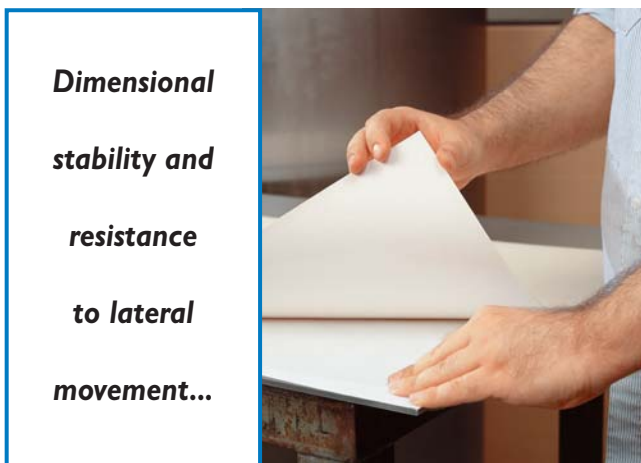
As with any product **Bar-Plate** supplies, versatility and variation are important. All rolls come in 5/16" widths. The .0015" thick High Carbon Steel Tape is available in 40-foot rolls and the .002" and .005" Stainless Steel Tape can be purchased in either 33-foot or 100-foot rolls.



▶ The dispenser box keeps the tape protected and neat. Just cut off what you need and apply.

Double-Coated Tape

Bar-Plate's Pressure Sensitive Double-Coated Tape is designed for the application of Counterboard to Diecutting Jackets and Cutting and Creasing Plates. Adhesion is quick and simple—either adhere the tape directly to the Counterboard and then apply the Counterboard to the cutting surface, or apply the tape to the cutting surface and then adhere the Counterboard. The cutting of the channels, skiving and stripping are effortlessly accomplished. Upon completion of the run, the counter peels off easily.



The key to our successful tape is its dimensional stability and resistance to lateral movement. Once the tape is in place, your scores will not shift regardless of the pressure. This is not a stock tape! It has been specifically designed for use in our industry—this includes the tissue carrier as well as the release liner.

Our unique tape comes in 72-yard rolls—double the industry standard! The six different roll sizes, 1" x 72 yards, 2" x 72 yards, 4" x 72 yards, 6" x 72 yards, 12" x 72 yards and 18" x 72 yards, are designed to meet all of your application requirements.

Lock Up Quoins

“High Speed” Lockup Quoins

If you're looking for a fast and simple way to lock your die in the press or chase, look no further. **Bar-Plate** is now the only US manufacturer of “High Speed” Quoins. Our unique construction applies even pressure across the entire face of the quoin, ensuring a tight fit. Our positive locking feature prevents slippage. The one-piece construction, along with a simple turning motion of the quoin key, provides unparalleled speed for tool lock-up, and special plating prevents corrosion.

Each quoin is inspected throughout the manufacturing, assembly, welding and plating process, and each quoin is stamped with a warranty date prior to shipment.

“High Speed” Quoins are available in 3', 6', 9' and 12" lengths. Special Bobst® Quoins are available in 9". Nominal overall dimensions are 11/16" x 11/16" x "L" closed and 11/16" x 27/32" x "L" open.

Our quoin keys are new and improved! Our standard “T” Handle Key and the 6" Right Angle Key both come with a non-slip cushion grip. A 5-tooth replaceable key shank is also available.

All keys are hardened and black oxide-coated to prevent rusting.



Each part is inspected as it is assembled.



TIG-welded to ensure maximum penetration and minimum distortion.

▶ **Bar-Plate is now the only manufacturer of “High Speed” quoins in the world.**



NEW!! Torque Quoin Key

Bar-Plate's new Torque Quoin Key reduces the chance of breaking the quoin. The most common reason for failure of a quoin is over tightening. Too much force is applied to tighten the key either by hand, hammer or tool extension.

Our new Torque Quoin Key allows 105 inch pounds of torque, which is more than sufficient to hold the die in place even on Bobst presses. In fact, Bobst recommends 80 inch pounds.

Bar-Plate's new Torque Quoin Key can be used to loosen the quoin simply by sliding the barrel down over the retention nut. Slide it back up and your ready to tighten the quoin.

Makeready Hand Tools



The Score Cutting Knife is the perfect companion to any of our Counterboard sheets.

of “ropey” or “ragged” scores. Unlike Matrix, which forces you to choose the closest approximate size to what you need, the adjustable Score Cutting Knife allows you to select the exact channel you require. The Score Cutting Knife also works well on all types of Counterboard, and is a big help when running dry or easily-cracked stock.

Score Cutting Knife

The only adjustable, double-bladed score/crease/counter cutting knife available in the industry, **Bar-Plate’s** ergonomically-designed Score Cutting Knife can be compared to no other. This lightweight and comfortable hand tool is designed to work with either hand and provides a secure grip. The ergonomic design makes cutting a straight line surprisingly simple.

Bar-Plate’s Score Cutting Knife has a built-in storage compartment to hold any—or all—of the nine shims, as well as spare blades. This makes changing shims and blades faster, thereby saving makeready time. .001”, .002”, .003”, .004”, .005”, .010”, .015”, .020” & .025” shims are included, as well as two precision side bevel, reversible .025” blades. .020” and .030” blades and extra shims are also available.

When hand cutting counters, the Score Cutting Knife allows you to cut both sides of the channel at the same time. This ability ensures a parallel channel and ends the possibility



Corrugated Box Score Cutting Knife

Designed specifically for use in the corrugated industry and on other thick materials, the Corrugated Box Score Cutting Knife has the ability to cut extra wide channels such as those often necessary in the brown box industry. Thirteen shims allow you to obtain channel widths from .010” to 3/8”

The Corrugated Box Score Cutting Knife comes complete with 13 shims and two blades.

Shim sizes: .001”, .002”, .003”, .004”, .005”, .010”, .015”, .020”, .025”, 1/32”, 1/16”, 3/32” & 1/8”. A .025” blade is standard, but .020” and .030” blades are also available.



Makeready Hand Tools

Skiveready Knife

Designed specifically for skiving/chamfering the Counterboard makeready, **Bar-Plate's** easy-to-hold Skiveready Knife features a center bevel blade and allows use from both sides and with either hand. The resulting clean, beveled edge eliminates the chance of the diecut sheet being caught in the press and the form pulled apart. The Skiveready Knife is also useful for skiving the edge of non-metallic Matrix to achieve a smooth ramp to the channel.

The Skiveready Knife comes complete with a center bevel blade, an allen wrench and a box. Additional blades are available in five-blade containers.



▶ The Skiveready Knife is the perfect companion to the **Bar-Plate** Score Cutting Knife.



Adjustable Sample Maker's Score Cutting Tool

Bar-Plate's easy-to-use Adjustable Sample Maker's Tool uses the same principle as our Score Cutting Knife—thirteen shims to give you the widest possible range for sample scoring. Simply determine the width of score you need by adding twice the thickness of the material you're scoring to the rule thickness and then adding an additional four thousandths. Once the width is determined, place the appropriate number of shims between the two fibre blades. When used with **Bar-Plate's** Sample Maker's Creasing Rule Holder, the Adjustable Sample Maker's Tool's high degree of flexibility makes it the ultimate hand sample making tool.



The Adjustable Sample Maker's Tool comes complete with two fibre blades, 13 shims, an allen wrench and box.

Shim sizes included are: .001", .002", .003", .004", .005", .010", .015", .020", .025", 1/32", 1/16", 3/32" & 1/8"
Additional shims and fibre blades are also available.

Adjustable Sample Maker's Creasing Rule Holder

Simply determine what point rule you need, insert it in the Creasing Rule Holder, lock it in place and you're ready to make a sample score. When the Creasing Rule Holder is used with **Bar-Plate's** Adjustable Sample Maker's Tool, sample making just doesn't get any easier.

Made of rugged steel construction, the Creasing Rule Holder will last forever. 12", 18", 24", 36" & 48" lengths are readily available. Custom sizes are also available.



The easiest, fastest method of hand scoring samples.

Makeready Tools

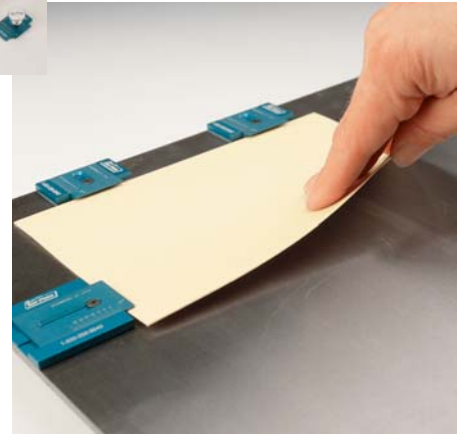
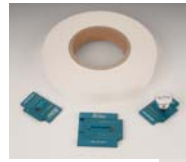
Low Profile Adjusto Guides

THE FASTEST AND MOST ACCURATE WAY TO ACHIEVE REGISTER

Bar-Plate's Low Profile Adjusto Guide is the answer to print-to-cut registration and faster makereadys on your platen press. The full, 2" x 2" size Guide and the half, 1" x 2" size Guide can be easily adhered to your cutting surface with **Bar-Plate's** Double-Coated Tape, and the Low Profile Guides provide plenty of frontal surface and a lip to keep the stock from rising. Once the Guide has been adhered in the chosen position, registration can easily be accomplished by loosening and tightening the allen screw with the provided tool. The vernier scale on both sides of the Guide makes precise adjustment easy to accomplish, and the low height of only .180" makes recessing the dieboard unnecessary.

Take one impression, measure how far out of register you are, adjust the Guides, take your second impression and you're ready to run. What could be easier? You'll save time and materials.

Both sizes of Guides, the adjusting tool and the double-coated tape are available on an individual basis, or can be purchased as a complete set of three Guides and a 1" x 72 yard roll of Double-Coated Tape.



▶ **This well-designed tool is the answer to faster makereadys.**



Adjusto Guides

The simplicity of **Bar-Plate's** Adjustable Diecutting Guide has made it one of our most popular and long-term products. The 2" x 2" steel-plated Adjusto Guide is both rugged and easy to use. Typically held in place by **Bar-Plate's** Double-Coated Tape, the Adjusto Guide allows you to achieve print-to-cut register on many types of presses quickly and easily. It can accommodate material thicknesses up to 1/2", and registration adjustments as fine as .001" and as great as 1" can be made simply by loosening and tightening the two nuts.

Unlike so many of the makeshift guides on the market today, **Bar-Plate's** Adjusto Guide does not require lifting or improvising to make adjustments and, therefore, reduces material waste as faster and less frequent adjustments are made.

The Adjusto Guide is available individually or as a set of three Guides with a 2" x 72-yard roll of Double-Coated Tape.

NEW!! Joggers

Bar-Plate—in conjunction with **MTI**—are pleased to bring you Standard and Extended length Joggers with universal mounting capabilities. With our new Joggers you will save time, money and reduce inventory. Our Extended Joggers help you to avoid wasted and damaged product and are available and affordable for everyone. Extended length joggers prevent product from sliding off the pallet when stacks are uneven.

You can simplify inventory by attaching the front, back, sides or internal areas of the lower blanking grid with just One Universal Jogger!!

- ▶ Retrofit capabilities to existing blanking grids.
- ▶ Mount to all standard blanking units.
- ▶ Base has top, front, back & side rail mounting holes.
- ▶ Adjustable length extension.
- ▶ Standard Jogger 1" to 2"
- ▶ Extended length Jogger 2" to 3".
- ▶ Extended slides fully collapse into the main housing.
- ▶ Interchangeable slides.
- ▶ Slim design offers maximum placement around and provides increased locations for electric eye sensors.
- ▶ Easily interchangeable slides for standard and extended lengths.
- ▶ Rugged design is engineered to hold up under severe operating conditions and extensive use.
- ▶ All parts are surface coated and the slides are manufactured from a high density alloy.



Blanking Tools

NEW!! Blanking Hold Down Assembly



The next evolution in Flat-Top Blanking. MTI has created a low-cost alternative for the upper blanking hold-down assembly which will reduce your cost over 45%.

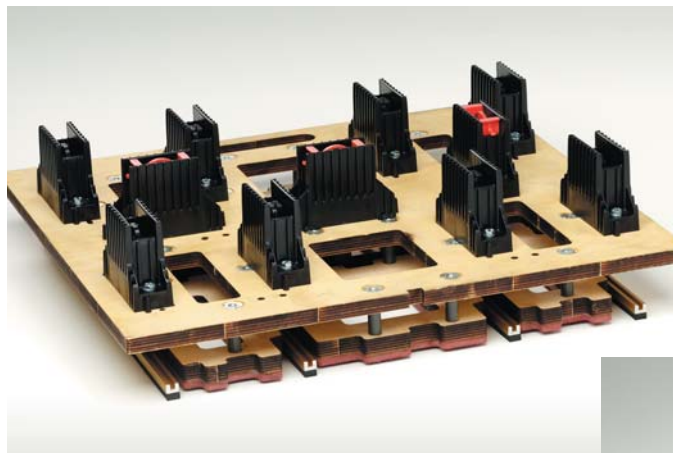
Our Patent-pending, Non-Jamming, Heavy Duty Hold-Down unit is manufactured using a naturally lubricating, high impact polymer blend that decreases the wear resistance between moving parts and results in the increased life of the assembly. These units have tested over 5,500,000 impressions at 10,200 sheets per hour without jamming.

The assembly's rigid connection to the presser bar results in an ideal blanking system for high press speed and long production runs. The guide housing pivots and prevents the presser rail from jamming. And, the added benefit of our universal design allows this unit to be used independently or in conjunction with multiple units along a presser bar, significantly reducing your inventory costs.

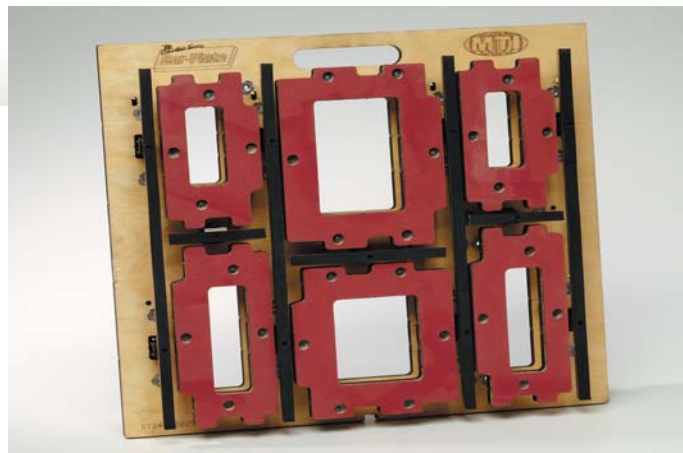
The predetermined height* of the presser bar assembly eliminates the need for individual adjustment. An additional rail clip can be added to hold the presser bar at 90 degrees from the direction of travel, making this ideal for tight areas. The safety lock stays in to prevent swivel of the rail, but can be removed to allow the presser rail to accommodate uneven pressures.

The rigid presser rail comes with adhesive rubber and all hardware. The bolts and screws have thread-locking patches, eliminating the possibility of the units coming loose during press operation.

*For owners of early model Bobst® I42ER Presses, the strut can be cut back to accommodate the low height restrictions.



▶ **Low Cost & High Durability**



Off Press Stripping Equipment

Air Stripping Hammers

THE FASTEST, EASIEST WAY TO STRIP LOADS OFF PRESS

As much as our industry has progressed, there is still no faster or better way to strip and separate die-cut skidded loads off press than with a **Bar-Plate** Air Stripping Hammer. Our tools have proven to be the best in the industry, with low maintenance and high reliability. The use of air as a power source keeps operating costs at a minimum.

Both CP and IR units are available with counter balancers, air input swivels, noise-reducing mufflers and a variety of chisels. **Bar-Plate** also offers spare parts and repair capabilities in-house.



Bar-Plate has both the CP and IR models in stock and ready for shipment.

Model	Blows per min.	Bore & Stroke (in.)	Overall Length (in.)	Air Inlet Thread size (in.)	Net Weight (lb.)	Size Chisel Shank (in.)	Retainers	Air Supply (PSI)	CFM
CP	2830	1.125 x 1	14	1/4	13	.680 x 2.375	Quick change collar	90	28
IR	2500	1.125 x 1	15.5	3/8	14.75	.680 x 2.375	Quick change collar	90	28

Straight & Offset Stripping Chisels

Bar-Plate stocks chisels for both the CP and IR Air Stripping Hammers. Straight and Offset Chisels are available in 5/8" and 3/4" blade widths with round or oval collars. The B-1 straight, square chisel is ideal for the corrugated industry and the C-1 cutter is the easy answer when side trim or stripping knife has not been added to the form.

All chisels are heat treated and tempered after finish grinding, resulting in superior performance and long life.



...Superior performance and long life

Model	Overall Length	O.D. Body	Collar	Shank
A-1 straight	18"	3/4"	oval or round	round
A-1 offset	18"	3/4"	oval or round	round
A-2 straight	18"	5/8"	oval or round	round
A-2 offset	18"	5/8"	oval or round	round
B-1 straight	18"	5/8" x 5/8"	oval or round	square
C-1 cutter	14"	1 1/4"	oval or round	hex

Air hammers with the Bar-Plate Quick Change Retainer require chisels with an oval collar.

Off Press Stripping Equipment

Air Hammer Balancer

This unique counter-balancer virtually eliminates the weight of the hammer, making back and shoulder strain problems of the past. **Bar-Plate's** Air Hammer Balancer keeps the hammer poised and ready for action, minimizes the motions required to bring the hammer from rest to work position, eliminates hammer pickup and lay down wear and prevents damage caused when the hammer is dropped.

TAKE THE WEIGHT OUT OF STRIPPING BY USING AN AIR HAMMER BALANCER



Air Hammer Swivel

Bar-Plate's Air Hammer Hose Swivel eliminates hose kinking and twisting, resulting in greater operator efficiency. By reducing the opposing force of the hose when under pressure, the Swivel helps to reduce operator strain and improves handling of the stripper.

Air Hammer Muffler

Made of high-impact plastic, **Bar-Plate's** Air Hammer Muffler restricts and directs exhaust air, reducing port noise and reducing DBA level an average of 8 to 10 DBA.

▶ **The Muffler can be installed in seconds with a common screwdriver.**

Hand Stripping Hammer

Designed specifically for the hand stripper, **Bar-Plate's** Hand Stripping Hammer features a flat head on one end and a beveled edge on the other to provide optimum flexibility in stripping all areas of the form. The Hand Stripping Hammer has been forged to **Bar-Plate's** exacting specifications using high quality steel and our very own mold. The rubber tip reduces impact damage and is easily replaceable.

Replacement heads, handles and tips are readily available.

▶ **The rubber tip reduces impact damage and is easily replaceable.**



Designed specifically for the Hand Stripper

Off Press Stripping Equipment



BP 1, 2 & 3 Stripmates

OFF PRESS INTERNAL STRIPPING MADE EASY

Bar-Plate's Stripmates can handle almost any form that requires internal set-up and stripping. **Bar-Plate's** 1, 2 & 3 Stripmates can all accommodate a 3/4" female stripping form, and the male form can either be conventional or one of our interchangeable punch assemblies and "T" slides. (Most diemakers can provide you with both the male and female assemblies required.) The BP 3 Stripmate's adjustable bottom rails provide enough flexibility to support most sheet layouts.

Bar-Plate's Stripmates have been expertly engineered to suit most requirements for stripping internal waste or finished product from within the sheet. The height of the load to be stripped depends on the sheet size, total square inches to be stripped, caliper and type of stock, amount of nicking and quality of diecutting.

▶ These machines work well on such substrates as paper, paperboard, solid fibre, corrugated, rubber, leather and composites.

Specifications—Bar-Plate Stripmate

	BP 1	BP 2	BP 3
Platen size	12" x 14"	14" x 20"	24" x 37"
Stroke	5"	5"	6"
Power	HAND	HAND	AIR
Pressure	6000 lbs.	6000 lbs.	8000 lbs.
T-Slots	2	2	5
Bed height	39"	39"	39"
Bed size	18" x 17"	19" x 24"	28" x 40"
Bed opening	13" x 12"	14" x 20"	24 3/4" x 40"
Bed ledge	3/4"	3/4"	1 1/2"
Ledge depth	3/4"	3/4"	3/4"
Bed supports	0	0	2
Floor space	24" x 18"	24" x 25"	30" x 44"
Overall height	64"	64"	86"
Net weight	275lbs.	350lbs.	1200lbs.

The **Bar-Plate** Stripmates are proven time and labor savers—load heights of three inches or more are not uncommon and the BP 1 & 2 hand presses or the big BP 3 pneumatic press can help make a difficult stripping job into a money-making operation.

If you are unsure of your application, send us some samples and we'll tell you if the Stripmates can do the job. Custom sizes and configurations are available. Give us a call with your requirements.

We have a trial offer of \$500 for 30 days + shipping. If you purchase the machine, the trial price is credited to the purchase price.



Diemaking Supplies

SIMONDS



NOTTING
ESTABLISHED 1844

Steel Rule Products

Bar-Plate carries all Simonds/Notting rule products.

We carry 2 tempers of creasing rule, in a full range of creasing heights and 30" and 36" lengths or coils. Both come with a precision radius to eliminate cracking and to ensure uniform crease on carton board.

SUPERFOLD is a medium hard rule for use on normal commercial work or on rule processors. Available in 2pt, 3pt, 4pt and 6pt.

SUPERCREEZ is a hard rule used in high quality work involving long runs. Available in 1 1/2pt, 2pt, 3pt and 4pt.

*Please specify height required—Standard range is 0.472"-1.18"

All Rule Products are laser accurate and have uniform straightness, height and width.

Creasing Rule Profiles



Standard Profile

- ▶ Back edge chamfered for ease of insertion.
- ▶ Full blended radius



Double Profile

- ▶ Full blended radius on top and bottom of rule.



Narrow Profile

- ▶ 1pt or 1-1/2pt blended radius on 2pt body.



Laser Profile

- ▶ 3pt and 4pt blended radius on 2pt and 3pt body.

Bar-Plate also carries a complete line of cutting rule products, including the 702, 702A, 703 and SURE BEND CUTTING RULE. For use with Paperboard, Corrugated Board, Labels, Post Cards, Business Cards, Felt and Cork, all rule products are laser accurate and have uniform straightness, height and width.

Ground cutting edge,
60 degree profile,
center bevel (CB).



Thin decarburized
outer layer for
consistent bendability.

702A, 703 and SURE BEND CUTTING RULE

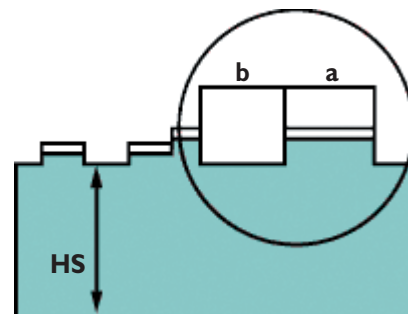
- ▶ Body hardness of 39 to 41 RC
- ▶ Bend performance of X3 (i.e. a minimum of 12.5 degrees)
- ▶ Available in 60 degree bevel
- ▶ Available with a ground cutting edge
- ▶ Available in 2pt, center bevel

Corners chamfered
for easy insertion
and reduced
make-ready time.

Medium-hard body
provides stability and
bendability.

PERFORATING RULE

Manufactured to the highest specifications, tooth & gap measurements are rigidly maintained by precision cutting techniques. Our high quality steel with maximum hardness resists breakage of teeth and ensures long and trouble free runs.



Diemaking Supplies

Bar-Plate Die Ejection Rubber

Bar-Plate carries two in-house ejection materials, Gray 5140 firm and extra firm Sponge Core. 5140, a very good general purpose ejection material, comes in 20" x 20" sheet size & thicknesses as follows: 1/8", 3/16", 1/4", 5/16", 3/8", 7/16", 1/2", 9/16" and 5/8".

Sponge Core, ia a premium combination of cork and rubber with outstanding resiliency, wear factor and tensile strength. Available sheet sizes are 18" x 18" and 36" x 36" in 1/4", 5/16" and 3/8" thicknesses.



Monroe Rubber

Bar-Plate carries the complete line of Monroe products.

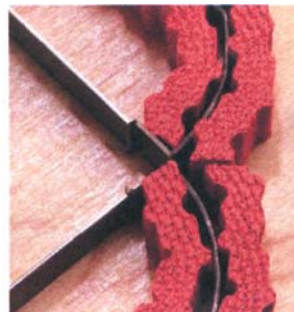
All grades of ejection material as well as the new profiles like E-Z set, Side Wave and Ejectoflex. We also carry punch ejectors. Call for pricing and sample cards.



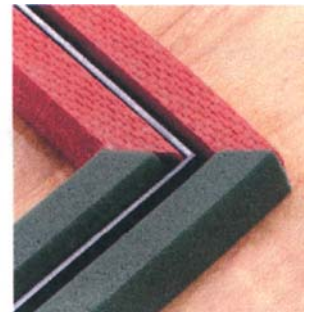
Save Time! Save Money!



MRP Side-Wave Ejectors



MRP Ejectoflex™ Ejectors



MRP E-Z Set™

Three different ways to improve diecutting speeds. Three different ways to save on rubbering time.

For fastest ejection with the fewest nicks, ejection materials should be spaced away from the cutting rule. All three of these ejectors have been engineered to provide automatic spacing so that rubbering a die can be done quickly and accurately.

Presses can run faster because automatic spacing means that nicks hold together (nick breakage is a major cause of slow press speeds.) And they also reduce static charge between the rubber and rule. Prove it to yourself.

Diemaking Supplies

Grip-n-Strip Ejection Rubber Adhesive

Grip-n-Strip is the latest addition to **Bar-Plate's** diemaking and diecutting supply line. A water-based, non-flammable adhesive, Grip-n-Strip sets quickly and holds die ejection material securely to the wood dieboard surface. When it's time to re-rubber or re-knife, Grip-n-Strip strips away cleanly and leaves no residue to scrape or sandpaper away. This makes re-knifing dies and replacing ejection material much faster and easier. Grip-n-Strip comes in easy-to-use one-gallon plastic containers.



▶ **The name says it all. Our Grip-n-Strip Die Ejection Material Adhesive knows when to hold....and when to let go!!**

Super Set I, II, III and Super Set Gel **NEW!!**

Cyanoacrylate Adhesive (Super Glue) can be used on flat or rotary dies. Ideal for use on Euro Rubber, Gum Rubber or any rubber having a smooth nonporous surface, like the majority of Profile Rubber. Specially-formulated to work with industry products. Available in 1 ounce and 1 pound applicator bottles.

Super Set I: High Viscosity; 15-40 second cure time; 3,000 to 3,700 p.s.i. shear strength.

Super Set II: Low Viscosity; 0 - 5 second cure time; 3000 to 4500 p.s.i. shear strength.

Super Set III: Low Viscosity; 0 - 5 second cure time; 3000 to 4500 p.s.i. shear strength.

Super Set Gel: Very High Viscosity; 5 - 20 second cure time; 3000 to 4587 p.s.i. shear strength.



Maple Steel Rule Dieboard

The ideal choice for block, jig and laser dies, **Bar-Plate's** Maple Steel Rule Dieboard has been proven to stand up to the rigors of flatbed cutting. So, if you are using a flatbed cutter, insist that your diemaker give you Maple Steel Rule Dieboard. 5-ply and 7-ply boards are available in 3/4", 11/16", 5/8", and 1/2" thicknesses and 24" x 36", 36" x 48", 48" x 60" and 48" x 72" standard sizes. Special sizes and other types of Dieboard are also available.



Diemaker's Tools

Cast Urethane Diemaker's Hammer

Using space-aged elastomer technology, **Bar-Plate** has created a revolutionary Hammer of unparalleled strength and performance. Produced from state-of-the-art cast urethane, the new Hammer not only offers a reversible head for superior wear resistance, it won't flake off onto the die like ordinary rawhide hammers. It's unique orange color makes it easy to locate in crowded work areas. And best of all, it will outlast a rawhide hammer 5 to 1.



▶ Replacement heads and handles are also available.



NEW!! Save your hammer handles and prevent injuries by installing our new bottom head.

A new bottom head can be added to our Urethane Hammers. We can install them on newly ordered hammers or send you just the bottoms to put on your existing **Bar-Plate** Urethane Hammers.

The new Hammer is available in four different sizes:

	#4	#4L	#5	#6
Head Size	2" x 3 1/2"	2" x 5"	2 3/4" x 4 1/4"	2 3/4" x 4 3/4"
Length	12 1/2"	12 1/2"	14"	14"
Weight	12 oz	15 oz	1 lb 5 oz	1 lb 7 oz

Diemaker's Tools

Precision Steel Rule Diemaker's Hammer

The only Hammer designed for and with the input of diemakers, the Precision Steel Rule Diemaker's Hammer is the ultimate Hammer. Produced from cast aluminum and impact coated, with a non-slip grip, the Hammer frame is balanced to do the work for you. The dead blow connecting stud gives added weight and eliminates bounce. The Precision Steel Rule Diemaker's Hammer is also the only Hammer with three individual heads—the main head is 1 1/4" x 1 1/4" and gives you plenty of knuckle clearance; the tapered rear head is 3/4" x 1 1/4" and is designed for inserting small knives and punches; and our unique bottom head is 1" x 1 1/4" and is best used for rule setting. All three heads are made of space-aged cast urethane and are easily replaced.



THE FRAME IS BALANCED TO

DO THE WORK FOR YOU.



With its tough and rugged design and replaceable heads, this may be the last Hammer you'll ever buy.

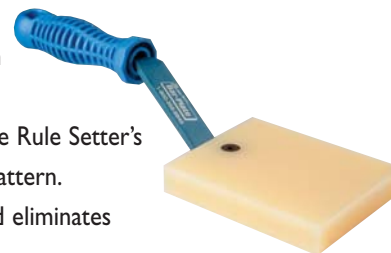


Bar-Plate's new tool to keep you from breaking the rules.

Rule Setter

Bar-Plate's NEW Rule Setter ensures optimal diecutting performance by providing the control necessary to insert the rules into the dieboard undamaged, perfectly-seated and level with every other rule in the dieboard. When using the Rule Setter, the rule is driven squarely, evenly and precisely perpendicular into the die without generating bridge or rule flexing, thereby greatly reducing the chance of damaging precise miters. Since only the Rule Setter comes in contact with the knife, virtually any hammer can be used. Our Rule Setter is faster, safer and more effective than traditional mallet rule insertion, while extending the reach of the diemaker and protecting the knives. Using the **Bar-Plate** Rule Setter ensures precise on press kiss-cut performance.

Made from space-aged polyurethane, the Rule Setter's replaceable pad will not chip or crack, resulting in a long life and an even wear pattern. The extended aluminum handle, with its shock absorbent grip, reduces strain and eliminates the possibility of smashed fingers.



Diemaker's Tools

Rule Tamper

Our NEW Rule Tamper is a unique steel rule insertion tool that combines the benefits of dead blow, bounce free, low impact rule insertion with laserpoint precision. Essential for use with automatic rule processors, the Tamper is perfect for fabricating precision dies for printed circuit boards, labels and gaskets, and for any steel rule die with precise parts or complex shapes. The Rule Tamper is designed not only to fit comfortably into the hand, but also to reduce jarring stress on the wrist and forearm.

The 1 1/4" x 1 1/4" standard head on one end is offset by a 3/4" x 1 1/4" head at the other end. The two heads are joined together with a dead blow stud and are easily replaceable. The heads are made from wear-resistant, non-chip urethane to protect the knife edge and to ensure perfect seating.

**A UNIQUE STEEL RULE
INSERTION TOOL**



Rule Tweaker

When the knife needs to be moved just a smidgen more to the left, or when the miter needs just a touch to make it perfect, or the crease needs just a tap to straighten it, we have the tool for you.

When making a rule profile adjustment, it is critical that you don't damage or mark the knife. **Bar-Plate** has developed the Rule Tweaker to correct knife distortion in the die, to ensure accurate joint alignment and even to modify the diecut profile. We call this TWEAKING. The Rule Tweaker can also be used to change the folding characteristics of a container or box by bending the creasing rule to improve carton assembly.

The Rule Tweaker's interchangeable handle can be used with any of the four available heads. A handle in both 2pt, 3pt and 4pt configurations is included, as well as 1/2" and 1" heads. 3 1/2" and 6" heads are sold separately.

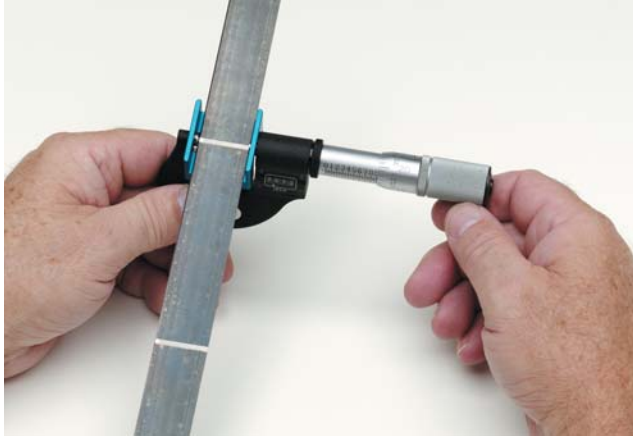
With a choice of head widths and point configurations, the Rule Tweaker allows you to "tweak" the necessary area without rule distortion. The height of the tweaking slot is designed to protect the edge of the rule from damage.



**Put away your vise grips,
pliers, hammers, chisels,
screwdrivers and other
adapted rule moving tools.
The Bar-Plate Rule
Tweaker replaces them all.**

Diemaker's Tools

NEW!! Micrometer Adapter

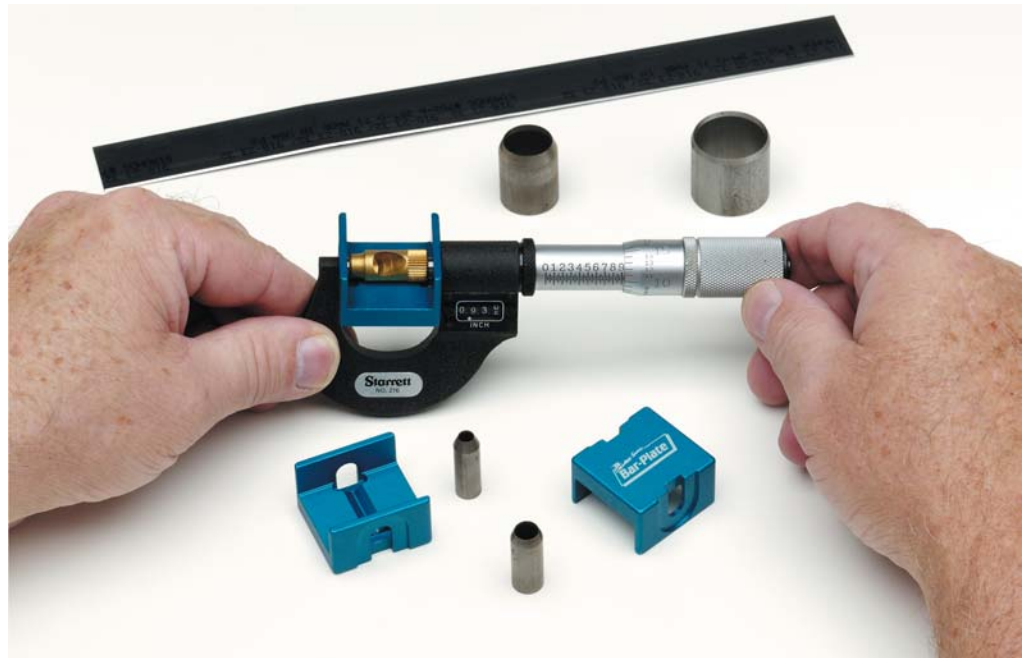


With the need for faster makereadies comes the need for tighter height tolerances on rule and punches. Measuring rule and punch height has always been a difficult task and is rarely accurate or repeatable.

Bar-Plate's new Micrometer Adapter makes that difficult task easy. Just slip in on the barrels of a standard 1" micrometer and start measuring. Precise, accurate and repeatable measurements are a sure thing. Just lay the strip of rule across the flat of the adapter; it enables perfect alignment of the rule and the barrels of the micrometer to the base and cutting edge of the rule. The adapter can be used on full-length strips and coils. The adapter can easily slide along the length of the rule allowing for multiple measurements.

The V-Groove in the center of the adapter is designed to hold the punches perpendicular to the face of the barrels. The punch can be rotated in the attachment to enable multiple measurements of the edge.

This must-have tool is designed for rule and punches 1" high or less. You can eliminate the use of the wrong height punch or rule by using this simple adapter. If you're foot-printing your press, this is the only tool that can ensure that you have the precise height rule necessary to build and use the footprint die.



Dieboard Gauge

The diemaking and diecutting process uses many materials selected based upon their thickness. **Bar-Plate's** Dieboard Gauge is a lightweight, circular gauge with accurately machined slots that allows you to quickly verify the thickness of any material. The Dieboard Gauge can be used to determine the thickness of dieboard, ejection material and many other products used in the diemaking process.

A convenient scale on the front and a chart for converting fractions to millimeters on the back make the Dieboard Gauge an indispensable and low-cost measurement tool for the diemaker and diecutter.



▶ **An indispensable and low-cost measurement tool.**

Diemaker's Tools



Bar-Plate's Steel Rule Puller

Bar-Plate's tried and tested Steel Rule Puller was created with the diemaker in mind. The Steel Rule Puller is not a pair of ordinary pliers that you can find at your local hardware store, but has been specifically designed for use in the diemaking industry. Cast from molds owned by **Bar-Plate**, the Steel Rule Puller is made of the best alloy steel forgings, properly heat-treated and tempered and then machine-finished. It has unsurpassed power grip and leverage built in. And the rounded bottom makes it easy to "rock" out the rule. Our Rule Puller can lift rule as close as 1/4".

► **Specifically designed for use in the diemaking industry**

NEW!! Notting Rule Puller

A different kind of Rule Puller with a broader base and offset handle results in greater pulling power with less chance of slipping off the rule. Our friends in Canada came up with this puller and we had to add it to our line. Can be used with 2, 3 or 4pt rule.



Bar-Plate's Steel Rule Jack

Designed to easily remove those "stuck-in-the-die" sections of rule, **Bar-Plate's** Steel Rule Jack clamps onto either 2pt or 3pt rule and pulls it vertically from the board, eliminating the chance of damage to the dieboard and rule.

Diemaker's Tools



Wagner Extractor 2000

The safety tool of the '90s, the Wagner Extractor 2000 pulls rules without cutting fingers and knuckles.

Bar-Plate is proud to offer the Wagner Extractor 2000.

The unique Wagner Extractor 2000 is easily the best in the business. We looked long and hard before we decided that there is no safer, faster or easier hand rule extractor anywhere on earth.

The tough and ruggedly-constructed Wagner Extractor 2000 pulls rule—up to 1 1/2" high rule x 4pt thickness (with standard pins)—straight up, thereby saving the kerf from any damage. Rule as high as 2" can be pulled simply by replacing the pins with longer ones, and pins may be moved to accommodate various die configurations.



Ergonomically-designed for user comfort and safety, the smooth lever action of the Wagner Extractor generates up to 600lbs. of pulling power, all the while keeping hands safely away from material. Jaws are low-cost and easy to replace with no brazing or soldering necessary.

*There is no
safer, faster
or easier hand
rule extractor
anywhere
on earth.*



Wagner Pneumatic Extractor 3000

In conjunction with Frank Wagner & Son, **Bar-Plate** has developed a pneumatic version of the popular hand powered Extractor 2000. We are proud to introduce the Wagner Pneumatic 3000.

The Wagner Pneumatic 3000 has the same versatile features as the Extractor 2000—removable foot pins and pads, along with easily-replaceable jaws. But, we've added air power—over 600 pounds at 90 psi! Easy push button operation, with fingertip adjusting knob to control speed, and omni-directional swivel coupling improves ease of use. The single- or two-handed grip keeps the operator's hand further away from the die surface and cutting rule. The Wagner Pneumatic 3000 features lightweight poly spiral tubing, and a mounting hole that readily accepts a balancer, helping to reduce operator fatigue.

You've heard the old saying, "The best just got better." Well, in this case, it is true. This is the finest and easiest-to-use rule extractor in the industry. And it only weighs 5.5 pounds!

We can also retrofit your existing Extractor 2000 with a pneumatic adapter. Call for further information.



Nicking Tools

Nicking Chisel Set

FOR FLAT AND ROTARY DIES

The key to proper nicking is to always nick perpendicular to the cutting edge of the knife. While our Quicknick Grinder is the perfect solution, it is not always the answer for everyone. So, years ago we developed a cost-effective alternative to grinding that can fit into anyone's budget—the Nicking Chisel Set.

The Nicking Chisel Set is a simple, inexpensive tool for nicking dies. The set comes complete with a knurled holder and three standard tips, .020" .030" & .040". The male-threaded tips and the female-threaded holder make changing tips quick and simple.

Bar-Plate's Nicking Chisel Set eliminates the need to use screwdrivers, cold chisels, files or other pieces of knife. The tips give a clean, precise and—when held vertically—perpendicular nick. Also ideal for enlarging an existing nick, the Nicking Chisel Set is a must in every professional diemaker and diecutter's tool box.



Special tips are also available:

.010", .015", .025" for use on medium hard rule and
.040", .050", .060", .070" & .080" for use on all rule.



***The best nicking tool in the industry
just got better!***

Quicknick Grinder

Bar-Plate's NEW Quicknick Grinder is an updated version of the most popular nicking device in the industry. We have incorporated many of the suggestions that you have made over the years.

This precision nicking tool is compact, easy-to-handle, and comes standard in 110 and 220 volt or pneumatic-driven. Precise depth control is accomplished by means of an adjustable depth stop and safety is ensured with the attached Lexan guard which protects without obscuring the knife edge and wheel.

The NEW **Bar-Plate** Quicknick Grinder comes with a newly-designed head with smooth rounded edges and finger grips, a smoother action and a simpler method of changing the wheel. Two new types of bases are also now available. Both bases have easy-to-read scales for accurate and consistent positioning of the nicks, and both come with a dense rubber matte finish on the bottom to protect the rule and to ensure non-slip, stable grinding. The bases are replaceable and interchangeable.

Nicking Tools

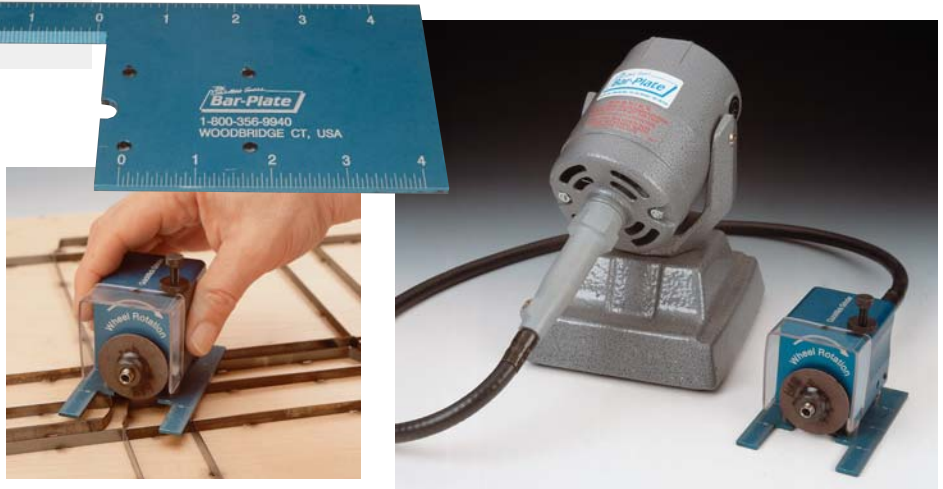


The 110 volt, 1/10th HP motor is standard, and now an optional 110 volt 1/8th HP variable speed motor is available. A three-foot flex shaft is standard on all electric nickers. Five- and six-foot shafts are also available.

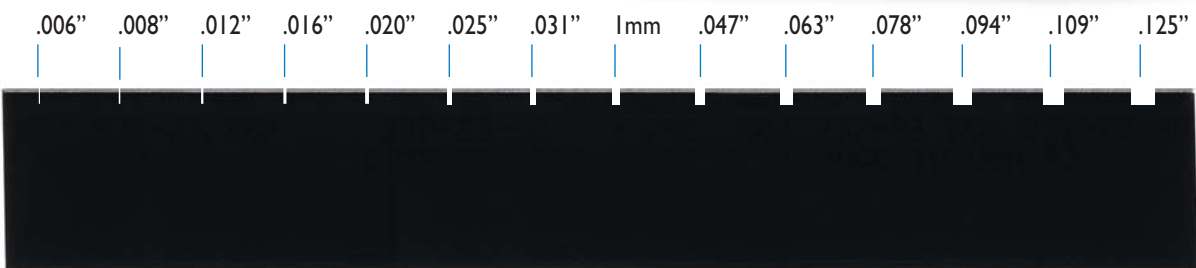
The Pneumatic Quicknick Grinder comes with a regulator and five-foot distribution hose. Other hose lengths are available. This unit requires 90 psi to operate at optimum efficiency.

▶ **The powerful Quicknick Grinder is safe and user-friendly.**

▶ **It provides vibration-free, clean grinding of perpendicular nicks and is easy to use. These features, combined with its outstanding flexibility, ensure exceptional results.**



Each grinder is supplied with 14 grinding wheels for controlled nick widths.
 NEW available wheel sizes—.006", .008", .012", .016", .020", .025", .031", 1mm, .047", .063", .078", .094", .109" & .125"



Diemaker's Tables

NEW!! Diemaker's Precision Worktables

Bar-Plate's NEW Diemaker's Precision Worktables are sure to become the industry standard. The precision tops are Mattison or Blanchard ground and are available either flush with the base or with an extended edge for accessory mounting. The base legs are manufactured from radius-formed uprights and then welded to the heavy-duty frame, giving the tables solid, unitized construction. The legs are equipped with feet that have tapped holes for adjustment screws and drilled holes for permanent mounting.

The Worktables feature Mattison or Blanchard precision-ground tops, which are attached with a unique bolt-on method so that the top can be removed and resurfaced. The bolt-on method also allows for the installation of sound- and vibration-dampening material between the top of the table and the frame.



Worktables feature Mattison or Blanchard precision-ground tops.

Give us a call with your special requirements or applications we can manufacture a Precision Worktable to your specific configuration. Side tables, drawers, shelves or just about anything you can imagine can be added. Our goal is to give you a custom table at a standard price.

Bar-Plate Precision Worktables are available in a variety of sizes and configurations.

Stock Sizes: 24" x 36", 36" x 48", 48" x 60", 48" x 72", 60" x 82" & 60" x 96" Standard Heights: 30", 36" & 42"
Standard Mattison or Blanchard Ground top plates: 3/4", 1", 1 1/4", or 1/2"

Diemaker's Tables

Bar-Plate is proud to represent the best in the business. We carry the full line of saws from Laborsaber. The Laborsaber "E" models 42," 52," 62" and ES42 Side Arm Saw, as well as the "DJ" series 36," 48," 60" and 70" have the fastest delivery in the business.

Call for individual specifications and prices. We will be happy to send you detailed specifications and brochures.

▶ **Laborsaber retractable & cutback jig saw blades are available**



Steel Rule Diemaker Jig Saw Blades

1-point to 4-point, retractable and non-retractable, with pins and without pins, standard and special lengths. **Bar-Plate** has Jig Saw Blades to fit most of the saws in the industry today. Made of tough alloy steel, **Bar-Plate's** Jig Saw Blades are composed of finely milled teeth, then heat treated, tempered and tooth set. Let **Bar-Plate** be the source of all of your Blade needs.

Let Bar-Plate be the source of all of your Blade needs.

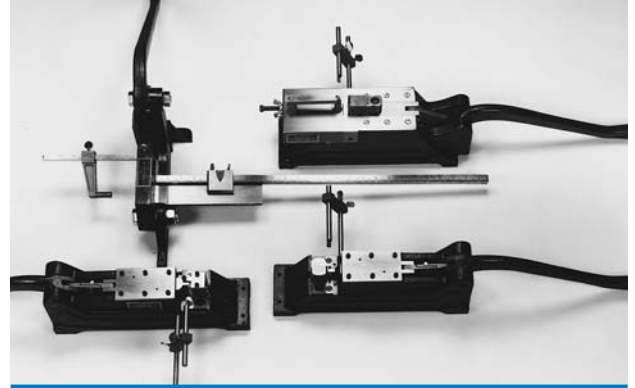
Rule Point	Width	Thickness	Teeth/Inch
1	.110"	.010"	12
1 1/2	1/8"	.018"	12
2	1/8"	.022"	8
3	1/8"	.032"	8
4	1/8"	.035"	8
4	5/32"	.042"	8

Diemaking Equipment

HELMOLD

Standard Rule Bender

In use wherever steel rule dies are made, the Standard Rule Bender's interchangeable male and female dies are used in forming rule to the desired shape without disturbing previously made bends. The Standard Rule Bender is equipped with an adjustable stop which may be instantly set, limiting the amount of die movement and enabling the user to readily make duplicate symmetrical bends. The Standard Rule Bender is also equipped with an adjustable gauge which can be used on either side of the machine to locate the position of the rule relative to the dies.



Also Available: Heavy Duty Bender, Bendall Attachment, Bending Die Sets, SI Notching Die (turns bender into notcher)

Standard Notcher

Used for notching and bridging rule, the Standard Notcher comes equipped with an adjustable link so that the knife can be reset after sharpening for entry into female knife.

Also available: Heavy Duty Notcher. Special size notches can be made to order.

▶ **Standard size notches of 1/4" x 5/8" or 5/16" x 3/4" are available for use with up to 3-point rule.**

Right and Left Hand Miter Machine

Created for those times when mitering from the opposite end of the formed piece is necessary, the Right and Left Hand Miter Machine can miter two ends at once. Not only is the process of cutting a length on the cutter, trimming one end on the miter and then setting up again to trim the other end eliminated, but small lengths can also be mitered on both ends with ease.

▶ **Also available: Single Miter Machine**

Rule Cutter

Designed to accurately cut steel rule to length, the Rule Cutter is an extremely powerful, rigidly-constructed tool that will cut up to 6-point tempered rule. It is equipped with front and rear gauges that are graduated by sixteenths. The short front gauge allows a cut of 6 1/2" and the long back gauge a cut of up to 25". The Rule Cutter's knives are readily removable for sharpening. Replacement knives are also available.

Also available are the Heavy Duty and E-Z Bender and Notcher as well as the Bendall Bender. Parts are in stock and repairs can be made in house. We have die sets ready for shipping the same day.

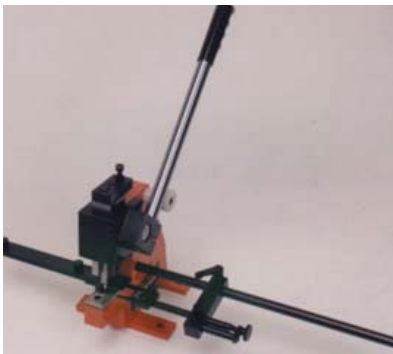
Diemaking Equipment

Nova Equipment



Nova Bender

Comfort, Ease, Versatility and Precision at a reasonable price. The unique handle adjustment system gives you the same handle movement and end of stroke position for any bend. A great mechanical advantage means you can bend up to 6pt of rule. Small die sets allow tight and multiple bends and the large work surface gives maximum support to the rule. Quick change of die sets is easily accomplished and no tools are required. Bend rules up to 1.965 inch in height in one stroke.



Nova Notcher

Comfort, Ease, Versatility, Precision and Time Saving. Works with straight or rotary rule. Any depth of notch can be obtained by simply adjusting the back gauge. Easy handle adjustments and a large mechanical advantage allows you to notch up to 6pt rule. The waste pieces clear through the rear of the female tool. 18mm x 10mm tool set is standard. Other size tool sets can be supplied.



Nova Lipper / Miterer

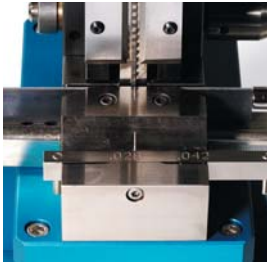
Comfort, Ease, Versatility, Precision and Time Saving. This double miterer creates distortion free miters and is quickly adjustable for 2pt or 3pt center or side bevel rule. The waste pieces clear through the rear of the female tool. The mechanical advantage generated by the adjustable handle allows easy 2pt and 3pt rule to be cut & mitered with minimum effort. Will miter one end only if required.



Nova Cutter

Comfort, Ease, Versatility, Precision and Time Saving. A unique and versatile gauging system ensures maximum flexibility, accuracy and consistency in the cutting of rule up to 4pt in thickness. Can cut up to 1 1/2 inch rule and with the design of the cutting blades there is no bevel distortion.

Hand Broaching Equipment

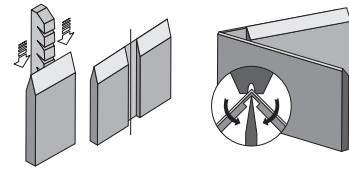


Broaching is simply the machining of a channel in the side of the cutting knife for the purpose of:

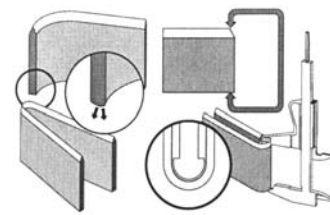
- ▶ Eliminating swaging (increasing knife height) at the bend point of the knife.
- ▶ Eliminating cracking of the face or edge of the knife.
- ▶ Eliminating knife edge distortion.
- ▶ Allowing a minimum radius to be achieved.
- ▶ Allowing the use of harder knife even on sharp bends and complex shapes.
- ▶ Effectively bending side bevel knife.
- ▶ Producing a "Kiss-Cut" precision die.
- ▶ Allowing for the manufacturing of a superior die in less time .
- ▶ Saving time and material.
- ▶ Reducing Makeready time on press.
- ▶ Allowing for consistent diecut part quality.
- ▶ Achieving greater press productivity.

Up to the present time most machining of a channel was done with expensive grinding equipment that quite often changed the temper of the knife unless a coolant was used. The use of a coolant often times led to corrosion.

Bar-Plate's new Broaching equipment have no effect on temper. Our new Cost Effective Hand Broacher and Semi Automatic Broacher puts this important diemaking tool within easy reach of all die shops.



The important technical advantages of Broaching, the removal of a strip of material from the side of steel rule (illustrated), were never affordable for the diemaker, until now...



Broaching eliminates base swaging at the bend point of the knife.

NEW!! Hand Broacher

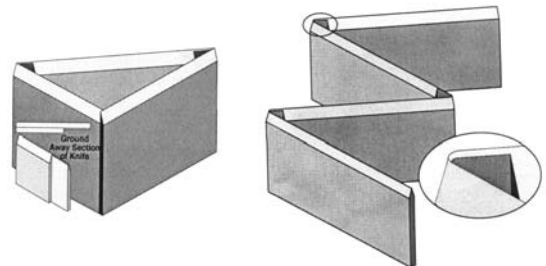
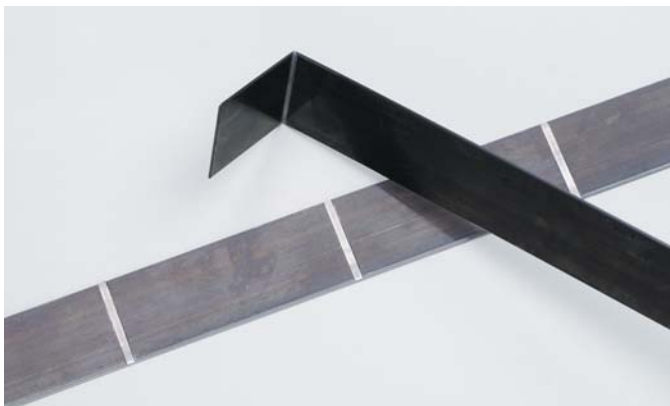
Our Hand Broacher is a cost-effective and easy-to-use machine that will easily meet the needs of the professional diemaker. With fast, simple and precise set up this tool is a must for all serious diemakers. Our exclusive spring loaded double pin clamping feature securely holds the knife in place while broaching. For use on 2pt and 3pt knife. Change over takes less than two minutes and is achieved by loosening two hex head bolts, removing one and sliding the 2pt or 3pt selector and then reinserting and tightening the bolts.

The Side Gauge can be set from 0 to 16.5 inches and is easily used. Operation is simple, just pull the double pin handle, insert the rule, oil the broach and pull the main broaching handle down and then up and you're finished.

Semi Automatic Broaching Equipment

Semi Automatic Broacher

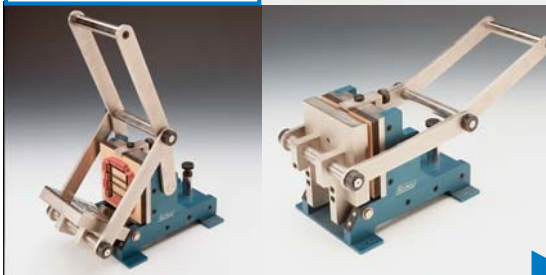
We have two models to choose from. Both models are electric and pneumatically operated. Model 1 has an automatic oiler and chip remover as well as foot pedal and hand actuation. Model 2 has foot pedal and hand actuation. Designed for the shop that expects to do a lot of broaching but does not want to expend the dollars for a fully automated broacher. Either machine has a basic side guide.



Broaching enables the diemaker to use a much harder cutting knife, even when bending complex shapes.

Diemaking Machines

The six-by-six die area gives you plenty of room for small, one-up jobs.



Handy Press

Created specifically for diecutting and embossing business cards, short production runs, die testing, knife & punch testing, machine loading and a multitude of other uses, the Handy Press is one unique, hand-operated platen press that every diemaker and diecutter should have. **Bar-Plate's** Handy Press makes quick print operations a breeze!

Hard-tempered, ground and polished cutting and backup plates make the Handy Press able to stand up to rugged use, ensuring a long life. Made of anodized aluminum and plated steel, this machine is virtually maintenance-free; occasional lubrication is all it needs. Replacement cutting and backup plates are readily available.

Makeready time for the Handy Press is minimal and much simpler than that for a standard size platen press. An eccentric shaft controls the pressure and provides the mechanical advantage, making this press so easy to operate.

▶ **Perfect for short run jobs or for die testing**

The MA Series III Swing Arm

The MA Series III Swing Arm Press can perform many different types of diecutting with traditional steel rule dies and clicker dies. The MA III Press has been used for leather, embroidery, badge cutting, magnetic cards, coasters, small plastic shapes, card stock, cloth accessories, straps and belt ends, key fobs, clothing, rubber, cork, plastic, wood and felt products, just to name a few.

The MA III is a ruggedly-built cutting press with a cam-actuated mechanical advantage that makes operation very easy. The swing arm operation provides a clear view and requires little effort. And once it has been used for “into” diecutting, additional makeready is not required.

The 8” x 8” upper gusseted platen and the 9” x 11” cutting pad* give you the flexibility to run many different size dies. Stroke adjustment is simply a matter of turning the head screw in the desired direction.

Multiple layer cutting is simple with feed-through dies or clicker dies—the height of what is to be cut is determined by the substrate and the type and construction of the die. When odd or difficult shapes of die ejection material are required, the production die is taken and used on the MA Series III Swing Arm Press to cut the material to the exact shape of the die. This procedure can cut rubbering time by up to three-quarters.

*Nominal 1” high cutting pads are readily available.



Designed for “into-style” diecutting, such as that used for leather, felt, saddlery, clothing, badges, cork, plastic and composites.

Diemaking Machines



NEW!! Tippmann Clicker Press

The Tippmann Clicker press uses an into diecutting process and with it's exceptional cutting power you will be assured of a perfect diecut part every time. A wide range of materials such as fabrics, gaskets, plastics, paper and even up to 1/2 inch thick leather can be cut. Our rugged Cast-Iron "C" frame allows for easy loading of dies and materials on the cutting deck. Just press the Dual Safety Buttons and in less than 3 seconds you will have the perfect diecut part.

Designed with only one moving part, this press is easy to operate and maintain. It's patented Air System raises the cutting deck to give you tons of cutting pressure. This press operates on 100 psi air pressure.

Two models are available.

Tonnage	7	15
Cutting area	12" x 12"	12" x 24"
Recommended Die Height	1.25"	1.25"

Mitutoyo Measuring Tools

Quick Mini (bottom left)

The Quick Mini is a convenient snap-action pocket thickness gage offering LCD digital readout. The Quick Mini is ideal for rapid checking of a wide variety of materials including metal, paper, plastic & wood. It's the size of a business card with easy on-off, a zero feature, and one button to switch from millimeters to inches. 0 to 12mm or 0" to 1" measuring range.

Dial Thickness Gage (top right)

The 7300 Dial Thickness gage offers a quick and efficient means of measurement on a variety of materials including metal, paper, plastic & wood. Convenient grip handle, thumb trigger and spring-loaded spindle. Large gage face for easy reading and knurled bezel for simple zeroing. 0" to .484" Measuring range.

These very compact thickness gages are designed for carrying convenience and are ideally suited for quick measuring of paper, metal, leather, wire, plastic and other similar material. The spindle is pre-loaded to provide a constant measuring force. Comes with a carrying case and has a measuring range of : Model 7308 (bottom right) 0" to .4". Model 7309 (top left) 0 to 10mm.



Measuring Tools

Starrett Measuring Tools

Bar-Plate is proud to distribute Starrett tools. With ISO 9000 Standards becoming more prevalent in our industry than ever before, the need for quality measuring tools is more important than ever. Starrett—more than any other manufacturer—stands up to the test.

▶ **No. 216 Series and No. 216M Series (Metric) Digital Micrometers**

The No. 216 Digital Micrometer makes readings faster and easier for even the most inexperienced user. Held and used in the conventional way, thousandths of an inch can be read directly from the digital counter and ten-thousandths of an inch are shown on a quick-reading vernier scale on the Micrometer sleeve. The ideal tool for measuring steel rule and punch height, the Micrometer's numbers can be read without removing your fingers from the thimble or the Micrometer from your hand.

▶ **No. 170 Dial Sheet Gage**

Starrett's Dial Sheet Gage measures sheet materials such as paper, cardboard, leather, plastic and metal. With one finger through the ring, press the thumb down on the pad to raise the moveable contact. Insert the material to be measured, release the thumb pad, and read the thickness being registered on the dial. The Gage can be easily zeroed by turning the knurled bezel and moving the hand back to zero. The range of this Gage is 0-.150" with a throat depth of 1-1/8". This Gage is also available with metric graduations.

▶ **No. 223 Paper Gage Micrometer Caliper**

Starrett's Paper Gage Micrometer Caliper is a satin-chrome-finished Micrometer that has been designed specifically for use in diemaking shops, diecutting plants, printing plants, paper warehouses and rubber plants. It accurately and quickly measures the thickness of paper, cardboard, chipboard, rubber, plastics and other similar materials. The Paper Gage Micrometer Caliper has a range of 11/32" and is graduated in thousandths of an inch. Anvil and spindle faces are lapped and an extra large 7/16" diameter prevents the compression of the material being measured, resulting in very accurate readings. The floating anvil disc automatically adjusts itself to any surface condition. A convenient finger holding ring is also provided.

▶ **No. 1010z and No. 1010ez Dial Indicator Pocket Gage. (1010M=metric)**

No. 1010z and No. 1010ez Dial Indicator Pocket Gages are used by salesman, inspectors, purchasing agents and production people for quick checks on materials up to 3/8" thick. Both Gages are easy to use, fit in your pocket and come with a protective case. The No. 1010z has a graduation of .001" and the No. 1010ez has a graduation of .0005"



After searching Starrett's catalog, we have come up with five of the most valuable tools to our industry.

Miscellaneous

E-Z Reacher

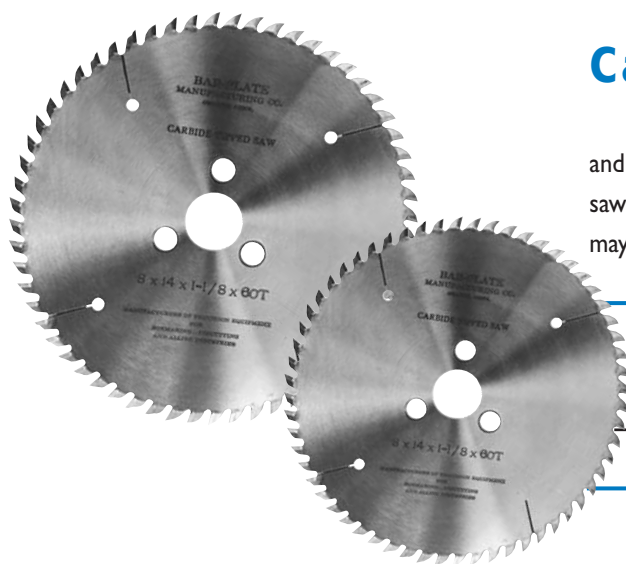
Bar-Plate's E-Z Reacher was developed with the safety of your machine operator in mind. How many times has your press operator—or you—reached into the press to clean out wasted or misfed sheets, risking serious injury or even loss of limb? Our E-Z Reacher will perform such tasks, keeping hands and limbs out of potentially dangerous areas.

Equipped with two replaceable suction cups at its end, the E-Z Reacher can grab hold of virtually any surface. Pressure is exponentially increased by squeezing the E-Z Reacher's handle so that the object can be safely pulled out and away from the press.

The E-Z Reacher is available in 20", 32", 40", 48", 60" and 72" lengths. If safety is as much a priority at your plant as it is at **Bar-Plate**, the E-Z Reacher is a tool every diecutter and diemaker should have.



E-Z Reacher is now available with the optional wrist support



Carbide Circular Saw Blades

Bar-Plate's Carbide Circular Saw Blades have been made to fit all makes and models of saws. When ordering, please specify the make and model of the saw and the diameter of the blade and arbor hole desired. Thickness and teeth may vary depending upon the make and model of the saw.

Diameter	Thickness	Teeth
7"	.125"	48
8"	.125"	60
10"	.125"	80

Corner Plates

Bar-Plate's Corner Plates help to reduce offset by reducing load height. By just using ordinary plywood and four Corner Plates per lift, pile temperature, ink transfer, offset and powder are greatly reduced. When not in use, the Corner Plates can be easily stacked—saving valuable plant floor space.



Our Corner Plates are readily available in the following ten standard sizes:

4" x 5" x 5", 5" x 5" x 5", 6" x 5" x 5", 7" x 6" x 6", 8" x 6" x 6", 9" x 6" x 6", 10" x 6" x 6", 11" x 7" x 7", 12" x 7" x 7" and 14" x 10" x 10". Special sizes are also available.

Miscellaneous

Die Storage Systems

By using an inverted “T” and double “L” design, Henderson Die Storage Racks allow Bobst® and platen dies to be safely and securely stored on 2 pins. Virtually any combination of sizes can be stored, and the die locator system and labels make die retrieval quick and easy.

Platen storage racks can hold up to 240 dies and Bobst® storage racks can accommodate up to 90 dies. Standard size racks are 12' x 10' long and 48" or 60" deep, but special sizes can be manufactured to meet your specific needs. 5,000# can be carried on the lower beam and 2,500# can be carried on the two upper beams. Each rack is constructed of heavy-gauge steel and triple-welded for superior strength. Assembly is quick and easy.



Die Transportation Carts

Bobst® and Platen Die Transportation Carts are the answer to nagging back problems! These simple, easy-to-roll carts cut down on the number of trips to the die room and reduce possible back strain by making die transportation quick and easy. The Platen Cart's 15-die capacity and the Bobst® Cart's 3-die-set capacity help to save both time and money.

Two locking and two non-locking heavy-duty rubber wheels roll smoothly over any factory surface. The Carts are extremely stable—even when loaded to their 750# capacity. Standard carts are 48" long, 62" high and 27" wide, and feature a plywood top and bottom so that additional small dies and materials can be transported at the same time.

Ink and Offset Plate Storage

Bar-Plate's Henderson Ink Storage System is the easiest way to organize, store and rotate ink stock. Specially designed for 5-gallon pails, the standard rack holds up to 108 pails and offers excellent access from both sides on all three levels for simplified stock rotation.

Bar-Plate's Offset Litho Plate Storage System cuts down on plate damage and cataloging labels make it easy to locate particular plates. The plates are suspended from a sliding “T” bar on two “S”-shaped hooks. The “T” bar slides easily along storage rack runners and can be used to transport the plates to the press. A front rack support jig holds selected “T” bars. Each rack is 12' high, 10' long and either 48" or 60" deep. Racks can accommodate up to 2,400 plates when multiple plates are hung on each side.



General Information

Orders cannot be canceled, terminated, or modified by the Buyer in whole or in part, nor shall release be held up by the Buyer after the order is in process, except with the express written consent of the Seller and then only upon the terms and conditions to be agreed upon which shall include protection of the Seller against all loss. Bar-Plate makes all shipments subject to Buyer's risk. All packages are insured unless otherwise instructed. Bar-Plate's liability ceases when goods are delivered to carrier. Bar-Plate will choose the carrier and method of shipment unless otherwise instructed by Buyer. All Buyer designated carrier shipments will be sent freight collect.

Orders received for in-stock products prior to 3:00 pm Eastern time, will be shipped the same day via UPS. Common carrier LTL orders must be received prior to 12:00 noon to ship the same day. Every effort will be made to ship all red and blue label orders on the day they are received.

No unauthorized returns are permitted nor will they be accepted. Authorized returns are subject to a minimum 15% restocking charge.

Prices are subject to change without notice.

Products depicted in this catalog are subject to changes and improvements without notice.

Bar-Plate is Year 2000 compliant. This includes, but is not limited to, sales order processing, invoicing, purchase order management, inventory control, accounts receivable and payable, general ledger transactions, quality control and all manufacturing functions. Our computer systems both network and desktop stand alone units have been checked and cleared for both hardware and software compliance with Year 2000 computations.

PRICES

Bar-Plate sells from a published price list. Special order items are quoted separately and all prices are F.O.B. Woodbridge, Connecticut. USA.

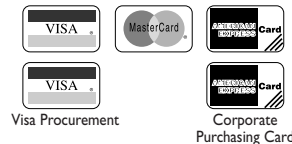
TERMS

Domestic – 1% 10 net 30 days to firms with approved credit. Failure to pay within terms will result in the loss of quantity, special and/or distributor discounts. All collection fees will be assigned to the Buyer.

Foreign – Net 30 days to firms with approved credit, otherwise payment in advance by direct wire transfer, or by check drawn on a U.S. Bank in U.S. Dollars. Irrevocable letters of credit and/or Sight Drafts are acceptable with prior notice.

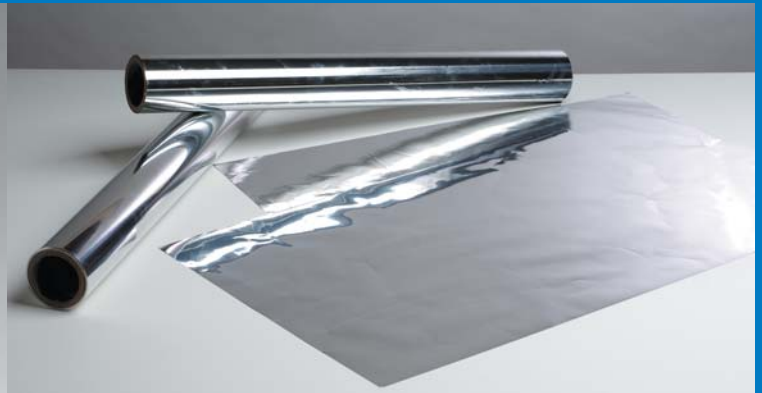
CREDIT CARD

We readily accept Master Card, Visa and Visa Procurement Cards, as well as American Express and the American Express Purchasing Card. All credit card transactions must be designated at the time of purchase.



THE Diecutter's Source

Bar-Plate



Bar-Plate Manufacturing
 232 Amity Road, P.O. Box 3540
 Woodbridge, CT 06525-0113
 Phone: 800-356-9940 877-BAR-PLATE 203-397-0033
 Fax: 203-397-0020
 Email: barplate@barplate.com



Distributed By:

