



**MOLD PINS  
& BUSHINGS**

## Shoulder Bushings

Bronze Plated Inch ..... 3



Hardened Steel ..... 4



Self-Lubricating ..... 4



Bronze Plated Metric ..... 5



## Straight Bushings

Bronze Plated ..... 6



Hardened Steel ..... 6



Self-Lubricating ..... 7



## Ejector Bushings

Bronze Plated - Inch ..... 8



Bronze Plated - Metric .... 8

Self-Lubricating - Inch ..... 9



Self-Lubricating - Metric .. 9

## Leader Pins

Inch ..... 10



Metric ..... 11

Lamina, Inc. began as a lamination die manufacturer in 1938. During the years from 1938 to the present Lamina has evolved into a manufacturer and distributor of die and mold components. Even though we no longer make dies, we do understand the die and mold maker's needs and objectives.

We have made it our business to supply quality products in a timely manner at reasonable prices. We know how to compete in the marketplace and supply you with the products you need when you need them.

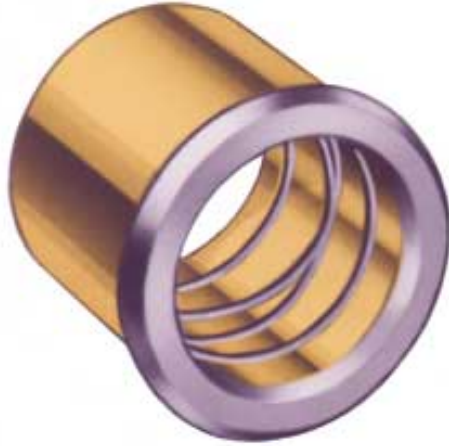
We introduce this catalog featuring bronze plated, hardened steel and self-lubricating bronze mold bushings and steel pins. It is our purpose to help you become more productive by helping to eliminate your downtime. With the products in stock, we will become your one-stop supplier and deliver the products you require each and every day.

Our catalog is presented in an easy-to-read format that displays the selection of products you need without a lot of extra data.

### Lamina Mission Statement:

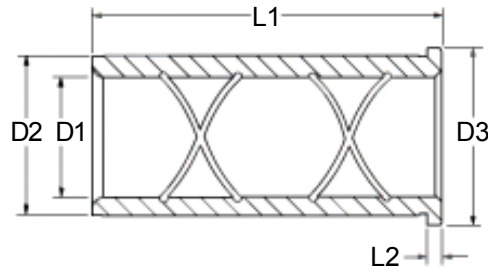
**We are committed to satisfying our customers by finding new and better ways to design, manufacture and distribute quality products.**





Precision-ground steel with exclusive Lamina Bronze plating. These are the only bushings that give you oil grooves and a true bushing surface that extends the full length of the bushing

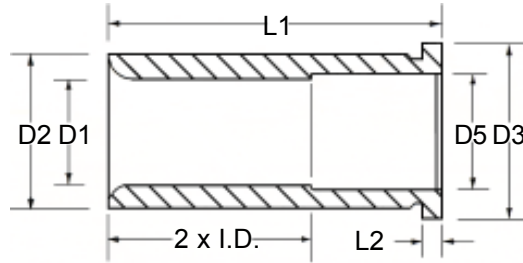
Lamina-Bronze bushings will operate smoother and longer than plain steel bushings ever could. Whatever lubricant is used, it is distributed throughout the bearing surface by the figure-8 oil groove system. The bronze surface will not gall.



GENERAL DIMENSIONS				
Nom. I.D.	D1 +.0005 -.0000	D2 +.0005 -.0000	D3 +.000 -.005	L2 +.000 -.005
3/4	.7505	1.1255	1.302	.187
7/8	.8755	1.2505	1.427	.187
1	1.0005	1.3755	1.552	.187
1-1/4	1.2505	1.6255	1.802	.187
1-1/2	1.5005	2.0005	2.177	.187
2	2.0005	2.5005	2.677	.187
2-1/2	2.5005	3.2505	3.427	.187
3	3.0005	3.7505	3.990	.500

## BRONZE PLATED - INCH

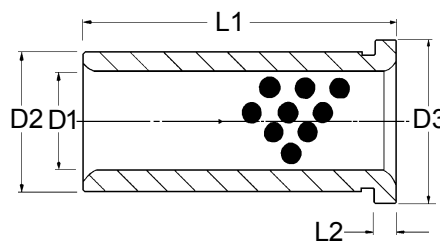
L1 LENGTH +.000/-030	INSIDE DIAMETER							
	3/4	7/8	1	1-1/4	1-1/2	2	2-1/2	3
7/8	LBB-06-07	LBB-07-07	LBB-08-07	LBB-10-07	LBB-12-07			
1-3/8	LBB-06-13	LBB-07-13	LBB-08-13	LBB-10-13	LBB-12-13	LBB-16-13	LBB-20-13	
1-7/8	LBB-06-17	LBB-07-17	LBB-08-17	LBB-10-17	LBB-12-17	LBB-16-17	LBB-20-17	
2-3/8	LBB-06-23	LBB-07-23	LBB-08-23	LBB-10-23	LBB-12-23	LBB-16-23	LBB-20-23	
2-7/8	LBB-06-27	LBB-07-27	LBB-08-27	LBB-10-27	LBB-12-27	LBB-16-27	LBB-20-27	
3-3/8	LBB-06-33	LBB-07-33	LBB-08-33	LBB-10-33	LBB-12-33	LBB-16-33	LBB-20-33	
3-7/8	LBB-06-37	LBB-07-37	LBB-08-37	LBB-10-37	LBB-12-37	LBB-16-37	LBB-20-37	LBB-24-37
4-3/8	LBB-06-43	LBB-07-43	LBB-08-43	LBB-10-43	LBB-12-43	LBB-16-43	LBB-20-43	
4-7/8	LBB-06-47	LBB-07-47	LBB-08-47	LBB-10-47	LBB-12-47	LBB-16-47	LBB-20-47	LBB-24-47
5-7/8	LBB-06-57	LBB-07-57	LBB-08-57	LBB-10-57	LBB-12-57	LBB-16-57	LBB-20-57	LBB-24-57
7-7/8								LBB-24-77



GENERAL DIMENSIONS					
Nom. I.D.	D1 +.0005 -.0000	D2 +.0005 -.0000	D3 +.000 -.005	D5 +.015 -.000	L2 +.000 -.005
3/4	.7505	1.1255	1.302	.780	.187
7/8	.8755	1.2505	1.427	.905	.187
1	1.0005	1.3755	1.552	1.031	.187
1-1/4	1.2505	1.6255	1.802	1.280	.187
1-1/2	1.5005	2.0005	2.177	1.531	.187
2	2.0005	2.5005	2.677	2.031	.187
2-1/2	2.5005	3.2505	3.427	2.531	.187
3	3.0005	3.7505	3.990	3.031	.500

## HARDENED STEEL - INCH

L1 LENGTH +.000/- .030	INSIDE DIAMETER							
	3/4	7/8	1	1-1/4	1-1/2	2	2-1/2	3
7/8	HLBB0607	HLBB0707	HLBB0807	HLBB1007	HLBB1207			
1-3/8	HLBB0613	HLBB0713	HLBB0813	HLBB1013	HLBB1213	HLBB1613	HLBB2013	
1-7/8	HLBB0617	HLBB0717	HLBB0817	HLBB1017	HLBB1217	HLBB1617	HLBB2017	
2-3/8	HLBB0623	HLBB0723	HLBB0823	HLBB1023	HLBB1223	HLBB1623	HLBB2023	
2-7/8	HLBB0627	HLBB0727	HLBB0827	HLBB1027	HLBB1227	HLBB1627	HLBB2027	
3-3/8	HLBB0633	HLBB0733	HLBB0833	HLBB1033	HLBB1233	HLBB1633	HLBB2033	
3-7/8	HLBB0637	HLBB0737	HLBB0837	HLBB1037	HLBB1237	HLBB1637	HLBB2037	HLBB2437
4-3/8	HLBB0643	HLBB0743	HLBB0843	HLBB1043	HLBB1243	HLBB1643	HLBB2043	
4-7/8	HLBB0647	HLBB0747	HLBB0847	HLBB1047	HLBB1247	HLBB1647	HLBB2047	HLBB2447
5-7/8	HLBB0657	HLBB0757	HLBB0857	HLBB1057	HLBB1257	HLBB1657	HLBB2057	HLBB2457
7-7/8								HLBB2477

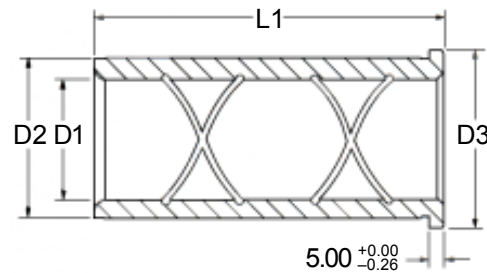
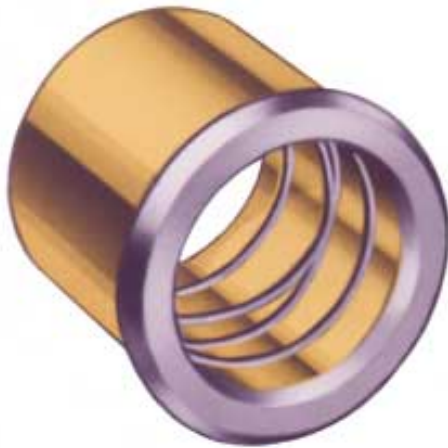


GENERAL DIMENSIONS				
Nom I.D.	D1 +.0005 -.0000	D2 +.0005 -.0000	D3 +.000 -.005	L2 +.000 -.005
3/4	.7505	1.1255	1.302	.187
7/8	.8755	1.2505	1.427	.187
1	1.0005	1.3755	1.552	.187
1-1/4	1.2505	1.6255	1.802	.187
1-1/2	1.5005	2.0005	2.177	.187
2	2.0005	2.5005	2.677	.187
2-1/2	2.5005	3.2505	3.427	.187
3	3.0005	3.7505	3.990	.500

## SELF-LUBRICATING - INCH

L1 LENGTH +.000/- .030	INSIDE DIAMETER							
	3/4	7/8	1	1-1/4	1-1/2	2	2-1/2	3
7/8	BGLB0607	BGLB0707	BGLB0807	BGLB1007	BGLB1207			
1-3/8	BGLB0613	BGLB0713	BGLB0813	BGLB1013	BGLB1213	BGLB1613	BGLB2013	
1-7/8	BGLB0617	BGLB0717	BGLB0817	BGLB1017	BGLB1217	BGLB1617	BGLB2017	
2-3/8	BGLB0623	BGLB0723	BGLB0823	BGLB1023	BGLB1223	BGLB1623	BGLB2023	
2-7/8	BGLB0627	BGLB0727	BGLB0827	BGLB1027	BGLB1227	BGLB1627	BGLB2027	
3-3/8	BGLB0633	BGLB0733	BGLB0833	BGLB1033	BGLB1233	BGLB1633	BGLB2033	
3-7/8	BGLB0637	BGLB0737	BGLB0837	BGLB1037	BGLB1237	BGLB1637	BGLB2037	BGLB2437
4-3/8	BGLB0643	BGLB0743	BGLB0843	BGLB1043	BGLB1243	BGLB1643	BGLB2043	
4-7/8	BGLB0647	BGLB0747	BGLB0847	BGLB1047	BGLB1247	BGLB1647	BGLB2047	BGLB2447
5-7/8	BGLB0657	BGLB0757	BGLB0857	BGLB1057	BGLB1257	BGLB1657	BGLB2057	BGLB2457
7-7/8								BGLB2477





GENERAL DIMENSIONS			
Nom I.D.	D1 +0.013 -0.000	D2 +0.013 -0.000	D3 +0.00 -0.13
20	20.013	26.013	28.00
25	25.013	32.013	35.00
30	30.013	38.013	41.00
40	40.013	50.013	53.00
50	50.013	60.013	63.00
60	60.013	70.013	73.00

## BRONZE PLATED - METRIC

L1 LENGTH +0.00 -0.76	INSIDE DIAMETER					
	20mm	25mm	30mm	40mm	50mm	60mm
25.00	LBBM-20-x-25	LBBM-25-x-25	LBBM-30-x-25	LBBM-40-x-25		
30.00	LBBM-20-x-30	LBBM-25-x-30	LBBM-30-x-30	LBBM-40-x-30	LBBM-50-x-30	LBBM-60-x-30
40.00	LBBM-20-x-40	LBBM-25-x-40	LBBM-30-x-40	LBBM-40-x-40	LBBM-50-x-40	LBBM-60-x-40
50.00	LBBM-20-x-50	LBBM-25-x-50	LBBM-30-x-50	LBBM-40-x-50	LBBM-50-x-50	LBBM-60-x-50
65.00	LBBM-20-x-65	LBBM-25-x-65	LBBM-30-x-65	LBBM-40-x-65	LBBM-50-x-65	LBBM-60-x-65
80.00	LBBM-20-x-80	LBBM-25-x-80	LBBM-30-x-80	LBBM-40-x-80	LBBM-50-x-80	LBBM-60-x-80
100.00	LBBM-20-x-100	LBBM-25-x-100	LBBM-30-x-100	LBBM-40-x-100	LBBM-50-x-100	LBBM-60-x-100
120.00	LBBM-20-x-120	LBBM-25-x-120	LBBM-30-x-120	LBBM-40-x-120	LBBM-50-x-120	LBBM-60-x-120
140.00		LBBM-25-x-140	LBBM-30-x-140	LBBM-40-x-140	LBBM-50-x-140	LBBM-60-x-140
150.00		LBBM-25-x-150	LBBM-30-x-150	LBBM-40-x-150	LBBM-50-x-150	LBBM-60-x-150

Precision-ground steel with exclusive Lamina Bronze plating. These are the only bushings that give you oil grooves and a true bushing surface that extends the full length of the bushing

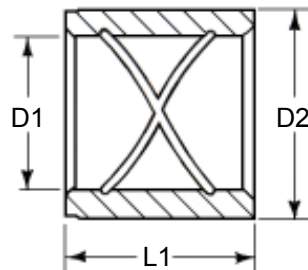
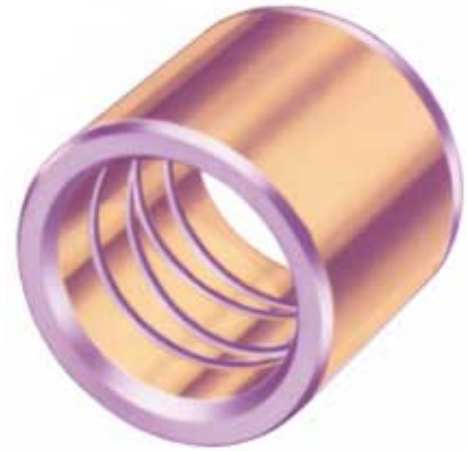
Lamina-Bronze bushings will operate smoother and longer than plain steel bushings ever could. Whatever lubricant is used, it is distributed throughout the bearing surface by the figure-8 oil groove system. The bronze surface will not gall.

**For flat wear surfaces see our Sliding Mold Components Catalog.**

**Featured are wear strips, gibs and gib assemblies in bronze-plated steel and self-lubricating bronze.**

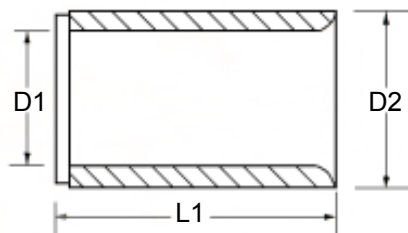
## BRONZE PLATED

PART NUMBER	Nom. I.D.	D1	D2	L1 LENGTH
		+ .0005	- .0000	- .030 - .060
STB-06-07 STB-06-13	3/4	.7505	1.1255	.875 1.375
STB-07-13	7/8	.8755	1.2505	1.375
STB-08-13	1	1.0005	1.3755	1.375
STB-10-13 STB-10-17	1-1/4	1.2505	1.6255	1.375 1.875
STB-12-13 STB-12-17	1-1/2	1.5005	2.0005	1.375 1.875
STB-16-37	2	2.0005	2.5005	3.875
STB-20-47	2-1/2	2.5005	3.2505	4.875
STB-24-47	3	3.0005	3.7505	4.875



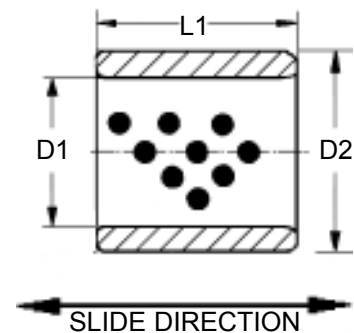
## HARDENED STEEL

PART NUMBER	Nom. I.D.	D1 I.D.	D2 O.D.	L1 LENGTH
		+ .0005	- .0000	+ .000 - .030
HSTB0607 HSTB0613	3/4	.7505	1.1255	.875 1.375
HSTB0713	7/8	.8755	1.2505	1.375
HSTB0813	1	1.0005	1.3755	1.375
HSTB1013 HSTB1017	1-1/4	1.2505	1.6255	1.375 1.875
HSTB1213 HSTB1217	1-1/2	1.5005	2.0005	1.375 1.875
HSTB1637	2	2.0005	2.5005	3.875
HSTB2047	2-1/2	2.5005	3.2505	4.875



## SELF-LUBRICATING

PART NUMBER	Nom. I.D.	D1 I.D.	D2 O.D.	L1 LENGTH
		+0.0005	-0.0000	+0.000 -0.030
BGST0607 BGST0611 BGST0612	3/4	0.7505	1.1255	.875 1.375 1.500
BGST0710 BGST0711 BGST0712	7/8	0.8755	1.2505	1.250 1.375 1.500
BGST0810 BGST0811 BGST0812 BGST0814 BGST0816 BGST0824	1	1.0005	1.3755	1.250 1.375 1.500 1.750 2.000 3.000
BGST1010 BGST1011 BGST1012 BGST1014 BGST1015 BGST1016 BGST1024	1-1.4	1.2505	1.6255	1.250 1.375 1.500 1.750 1.875 2.000 3.000
BGST1210 BGST1211 BGST1212 BGST1214 BGST1215 BGST1216 BGST1224	1-1/2	1.5005	2.0005	1.250 1.375 1.500 1.750 1.875 2.000 3.000
BGST1410 BGST1412 BGST1414 BGST1416 BGST1420 BGST1424 BGST1428 BGST1432	1-3/4	1.7505	2.2505	1.250 1.500 1.750 2.000 2.500 3.000 3.500 4.000
BGST1610 BGST1612 BGST1616 BGST1620 BGST1624 BGST1631 BGST1639	2	2.0005	2.5005	1.250 1.500 2.000 2.500 3.000 3.875 4.875
BGST1812 BGST1816 BGST1820 BGST1824	2-1/4	2.2505	2.7505	1.500 2.000 2.500 3.000
BGST2012 BGST2016 BGST2024 BGST2039	2-1/2	2.5005	3.2505	1.500 2.000 3.000 4.875
BGST2416 BGST2420 BGST2424 BGST2428 BGST2439	3	3.0005	3.7505	2.000 2.500 3.000 3.500 4.875



Oil-impregnated graphite plugs cover 20-30% of the wear surface, providing a self-lubricating film of graphite on the wear surface.

- **Self Lubricating**
- **Consistent quality control**
- **Resists abrasion**
- **Excellent wear characteristics**

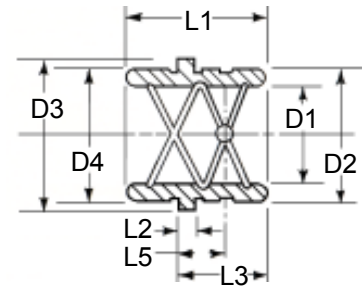
## BRONZE PLATED - INCH

PART NUMBER	Nom. I.D.	D1 +.0005 -.0000	D2 +.0005 -.0000	D3 +.000 -.010	D4 +.000 -.001	L1 +.000 -.030	L2 +.000 -.005	L3 +.000 -.015	L5 ±.005
ELB-750	3/4	.7510	1.1255	1.302	1.124	1.500	.187	1.000	.560
ELB-875	7/8	.8760	1.2505	1.427	1.249	1.500		1.000	.560
ELB-100	1	1.0010	1.3755	1.552	1.374	1.750		1.120	.620
ELB-125	1-1/4	1.2510	1.6255	1.802	1.624	1.750		1.120	.620
ELB-150	1-1/2	1.5010	2.0005	2.177	1.999	1.750		1.120	.620
ELB-200	2	2.0010	2.5005	2.687	2.499	2.250		1.620	.800



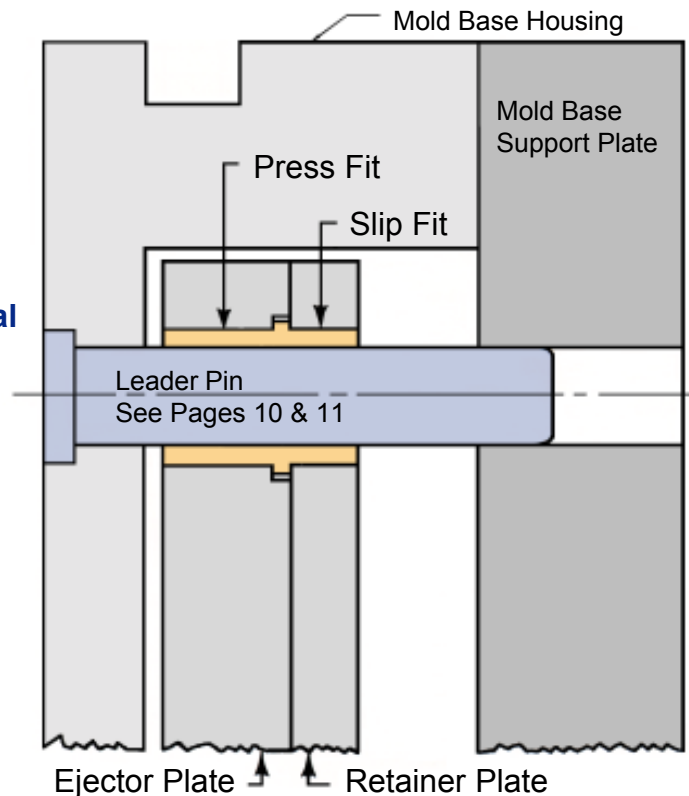
## BRONZE PLATED - METRIC

PART NUMBER	Nom. I.D.	D1 +0.013 -0.000	D2 +0.013 -0.000	D3 +0.00 -0.13	D4 +0.000 -0.026	L1 +0.00 -0.76	L2 +0.00 -0.26	L3 +0.00 -0.38	L5 ±0.13
EJM-20	20	20.063	26.013	28.00	26.00	37.00	5.00	25.00	15.00
EJM-25	25	25.063	32.013	35.00	32.00	45.00		29.00	16.00
EJM-30	30	30.063	38.013	41.00	38.00	45.00		29.00	16.00



### FEATURES:

- Lubrication ring with lubrication hole
- Press Fit Diameter ground to size
- Opposite end ground for ejector plate removal
- Lamina Bronze plated I.D.
- Radii to serve as lead
- I.D. Oversize to accommodate expansion
- Plating thickness .004 - .005 per side





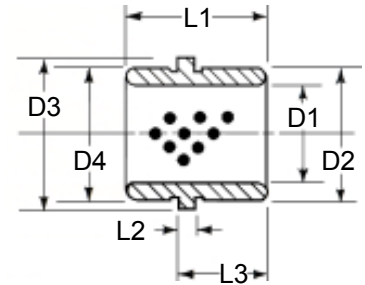
## SELF-LUBRICATING - INCH

PART NUMBER	Nom. I.D.	D1 +.0005 -.0000	D2 +.0005 -.0000	D3 +.000 -.010	D4 +.000 -.001	L1 +.000 -.030	L2 +.000 -.005	L3 +.000 -.015
BGEL0612	3/4	0.7510	1.1255	1.302	1.124	1.50	.187	1.000
BGEL0712	7/8	0.8760	1.2505	1.427	1.249	1.50		1.000
BGEL0814	1	1.0010	1.3755	1.552	1.374	1.75		1.120
BGEL0816						2.00		1.620
BGEL1014	1-1/4	1.2510	1.6255	1.802	1.624	1.75		1.120
BGEL1020						2.50		1.870
BGEL1214	1-1/2	1.5010	2.0005	2.177	1.999	1.75		1.120
BGEL1220						2.50		1.870
BGEL1618	2	2.0010	2.5005	2.687	2.499	2.25		1.620



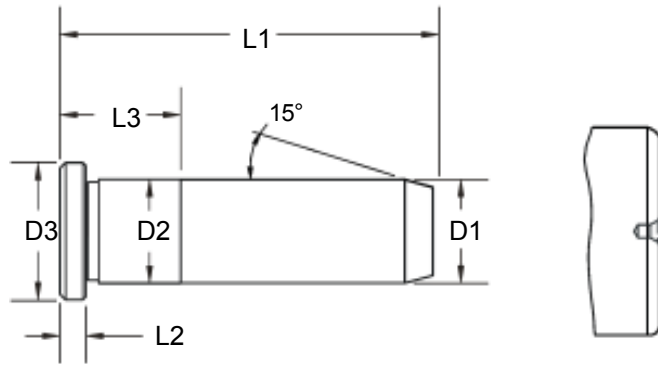
## SELF-LUBRICATING - METRIC

PART NUMBER	Nom. I.D.	D1 +0.013 -0.000	D2 +0.013 -0.000	D3 +0.00 -0.13	D4 +0.000 -0.026	L1 +0.00 -0.76	L2 +0.00 -0.26	L3 +0.00 -0.38
BGELM2037	20	20.063	26.013	28.00	26.00	37.00	5.00	25.00
BGELM2545	25	25.063	32.013	35.00	32.00	45.00		29.00
BGELM3045	30	30.063	38.013	41.00	38.00	45.00		29.00



Oil-impregnated graphite plugs cover 20-30% of the wear surface, providing a self-lubricating film of graphite on the wear surface.

- Self Lubricating
- Consistent quality control
- Resists abrasion
- Excellent wear characteristics



3/4" dia. – 1-1/2" dia. have taper length of 1/4"  
2" & 2-1/2" have taper length of 3/8"

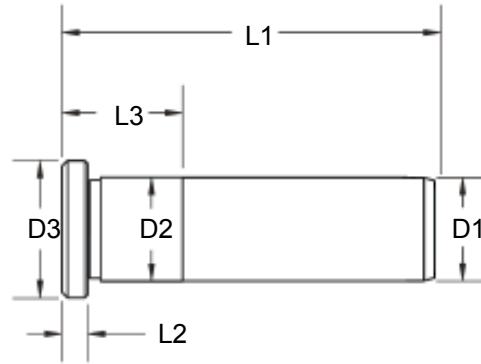
3" Pins have radius

Not all pins are ground on centers.

GENERAL DIMENSIONS				
NOM PIN DIA	D1 +.0000 -.0005	D2 +.0005 -.0000	D3 +.000 -.010	L2 +.000 -.005
3/4	.7490	.7510	.990	.187
7/8	.8740	.8760	1.115	.250
1	.9990	1.0010	1.240	.250
1-1/4	1.2490	1.2510	1.490	.312
1-1/2	1.4990	1.5010	1.740	.312
2	1.9990	2.0010	2.240	.312
2-1/2	2.4990	2.5010	2.740	.312
3	2.9990	3.0010	3.365	.500

Precision-ground steel construction. Lamina has produced hundreds of thousands of these pins. No finer quality will be found anywhere.

L1 OVERALL LENGTH	NOMINAL DIA. 3/4"		NOMINAL DIA. 7/8"		NOMINAL DIA. 1"		NOMINAL DIA. 1-1/4"		NOMINAL DIA. 1-1/2"		NOMINAL DIA. 2"		NOMINAL DIA. 2-1/2"		NOMINAL DIA. 3"	
	PART NUMBER	L3	PART NUMBER	L3	PART NUMBER	L3	PART NUMBER	L3	PART NUMBER	L3	PART NUMBER	L3	PART NUMBER	L3	PART NUMBER	L3
1-3/4	06-16-LP	7/8	07-16-LP	7/8	08-16-LP	7/8										
2-1/4	06-22-LP	7/8	07-22-LP	7/8	08-22-LP	7/8										
2-3/4	06-26-LP	7/8	07-26-LP	7/8	08-26-LP	7/8	10-26-LP	7/8								
3-1/4	06-32-LP	7/8	07-32-LP	7/8	08-32-LP	7/8	10-32-LP	7/8								
3-3/4	06-36-LP	7/8	07-36-LP	7/8	08-36-LP	7/8	10-36-LP	7/8	12-36-LP	1-3/8						
4-1/4	06-42-LP	1-3/8	07-42-LP	1-3/8	08-42-LP	1-3/8	10-42-LP	7/8	12-42-LP	1-3/8						
4-3/4	06-46-LP	1-3/8	07-46-LP	1-3/8	08-46-LP	1-3/8	10-46-LP	1-3/8	12-46-LP	1-3/8						
5-1/4	06-52-LP	1-3/8	07-52-LP	1-3/8	08-52-LP	1-3/8	10-52-LP	1-3/8	12-52-LP	1-3/8						
5-3/4	06-56-LP	1-7/8	07-56-LP	1-3/8	08-56-LP	1-3/8	10-56-LP	1-3/8	12-56-LP	1-3/8	16-56-LP	1-7/8	20-56-LP	2-3/8		
6-1/4	06-62-LP	1-7/8	07-62-LP	1-7/8	08-62-LP	1-3/8	10-62-LP	1-3/8	12-62-LP	1-3/8						
6-3/4	06-66-LP	1-7/8	07-66-LP	1-7/8	08-66-LP	1-7/8	10-66-LP	1-7/8	12-66-LP	1-3/8	16-66-LP	1-7/8	20-66-LP	2-3/8		
7-1/4	06-72-LP	1-7/8	07-72-LP	1-7/8	08-72-LP	1-7/8	10-72-LP	1-7/8								
7-3/4	06-76-LP	1-7/8	07-76-LP	1-7/8	08-76-LP	1-7/8	10-76-LP	1-7/8	12-76-LP	1-7/8	16-76-LP	1-7/8	20-76-LP	2-3/8		
8-1/4			07-82-LP	1-7/8	08-82-LP	1-7/8	10-82-LP	1-7/8								
8-3/4			07-86-LP	1-7/8	08-86-LP	1-7/8	10-86-LP	1-7/8	12-86-LP	1-7/8	16-86-LP	1-7/8	20-86-LP	2-3/8	24-86-LP	2-7/8
9-1/4	06-92-LP	1-7/8	07-92-LP	1-7/8	08-92-LP	1-7/8	10-92-LP	1-7/8								
9-3/4					08-96-LP	1-7/8	10-96-LP	1-7/8	12-96-LP	1-7/8	16-96-LP	1-7/8	20-96-LP	2-3/8		
10-1/4					08-102-LP	1-7/8	10-102-LP	1-7/8								
10-3/4			07-106-LP	1-7/8	08-106-LP	1-7/8	10-106-LP	1-7/8	12-106-LP	1-7/8	16-106-LP	1-7/8	20-106-LP	2-3/8	24-106-LP	2-7/8
11-1/4					08-112-LP	1-7/8	10-112-LP	1-7/8								
11-3/4					08-116-LP	1-7/8	10-116-LP	1-7/8	12-116-LP	1-7/8	16-116-LP	1-7/8	20-116-LP	2-3/8		
12-1/4			07-122-LP	1-7/8	08-122-LP	1-7/8	10-122-LP	1-7/8								
12-3/4							10-126-LP	1-7/8	12-126-LP	1-7/8	16-126-LP	1-7/8	20-126-LP	2-3/8	24-126-LP	2-7/8
13-3/4							10-136-LP	1-7/8	12-136-LP	1-7/8	16-136-LP	1-7/8	20-136-LP	2-3/8		
14-3/4							10-146-LP	1-7/8	12-146-LP	1-7/8	16-146-LP	1-7/8	20-146-LP	2-3/8	24-146-LP	2-7/8
15-3/4							10-156-LP	1-7/8	12-156-LP	1-7/8	16-156-LP	1-7/8	20-156-LP	2-3/8		
16-3/4											16-166-LP	1-7/8	20-166-LP	2-3/8	24-166-LP	2-7/8
18-3/4											16-186-LP	1-7/8	20-186-LP	2-3/8	24-186-LP	2-7/8



20mm through 60mm  
Not all pins are ground on centers.

GENERAL DIMENSIONS				
NOM PIN DIA	D1	D2	D3	L2
	+0.000 -0.013	+0.013 -0.000	+0.00 -0.26	+0.00 -0.05
20	19.975	20.025	25.00	5.00
25	24.975	25.025	31.00	6.00
30	29.975	30.025	36.00	8.00
40	39.975	40.025	46.00	8.00
50	49.975	50.025	56.00	8.00
60	59.975	60.025	66.00	8.00

# METRIC

L1 OVERALL LENGTH	NOMINAL DIA. 20mm		NOMINAL DIA. 25mm		NOMINAL DIA. 30mm		NOMINAL DIA. 40mm		NOMINAL DIA. 50mm		NOMINAL DIA. 60mm	
	PART NUMBER	L3	PART NUMBER	L3	PART NUMBER	L3	PART NUMBER	L3	PART NUMBER	L3	PART NUMBER	L3
50mm	MLP-20-x-50	25mm	MLP-25-x-50	25mm								
60mm	MLP-20-x-60	25mm	MLP-25-x-60	25mm								
70mm	MLP-20-x-70	25mm	MLP-25-x-70	25mm	MLP-30-x-70	25mm						
80mm	MLP-20-x-80	25mm	MLP-25-x-80	25mm	MLP-30-x-80	25mm						
90mm	MLP-20-x-90	25mm	MLP-25-x-90	25mm	MLP-30-x-90	25mm	MLP-40-x-90	35mm				
100mm	MLP-20-x-100	25mm	MLP-25-x-100	25mm	MLP-30-x-100	25mm	MLP-40-x-100	35mm				
120mm	MLP-20-x-120	35mm	MLP-25-x-120	35mm	MLP-30-x-120	35mm	MLP-40-x-120	35mm				
140mm	MLP-20-x-140	35mm	MLP-25-x-140	35mm	MLP-30-x-140	35mm	MLP-40-x-140	35mm				
150mm									MLP-50-x-150	45mm	MLP-60-x-150	60mm
160mm	MLP-20-x-160	45mm	MLP-25-x-160	35mm	MLP-30-x-160	35mm	MLP-40-x-160	35mm				
175mm									MLP-50-x-175	45mm	MLP-60-x-175	60mm
180mm	MLP-20-x-180	45mm	MLP-25-x-180	45mm	MLP-30-x-180	45mm	MLP-40-x-180	45mm				
200mm	MLP-20-x-200	45mm	MLP-25-x-200	45mm	MLP-30-x-200	45mm	MLP-40-x-200	45mm	MLP-50-x-200	45mm	MLP-60-x-200	60mm
220mm	MLP-20-x-220	45mm	MLP-25-x-220	45mm	MLP-30-x-220	45mm	MLP-40-x-220	45mm				
225mm									MLP-50-x-225	45mm	MLP-60-x-225	60mm
240mm	MLP-20-x-240	45mm	MLP-25-x-240	45mm	MLP-30-x-240	45mm	MLP-40-x-240	45mm				
250mm									MLP-50-x-250	45mm	MLP-60-x-250	60mm
260mm			MLP-25-x-260	45mm	MLP-30-x-260	45mm	MLP-40-x-260	45mm				
275mm									MLP-50-x-275	45mm	MLP-60-x-275	60mm
280mm			MLP-25-x-280	45mm	MLP-30-x-280	45mm	MLP-40-x-280	45mm				
300mm			MLP-25-x-300	45mm	MLP-30-x-300	45mm	MLP-40-x-300	45mm	MLP-50-x-300	45mm	MLP-60-x-300	60mm
325mm									MLP-50-x-325	45mm	MLP-60-x-325	60mm
350mm									MLP-50-x-350	45mm	MLP-60-x-350	60mm
375mm									MLP-50-x-375	45mm	MLP-60-x-375	60mm
400mm									MLP-50-x-400	45mm	MLP-60-x-400	60mm




**Division of Anchor Lamina America, Inc.**

PO Box 2540, Farmington Hills, Michigan • 1-800-6-LAMINA • Fax: 248-553-6842 • E-mail:sales@lamina.com  
 United States of America website: www.anchorlamina.com

**ANCHOR LAMINA COMPANIES**

ANCHOR LAMINA INC WINDSOR, ONT CANADA 519-966-4431	ANCHOR LAMINA INC CAMBRIDGE, ONT CANADA 519-740-3060	ANCHOR LAMINA INC MISSISSAUGA, ONT CANADA 905-274-3448	ANCHOR LAMINA INC MONTREAL, QUE CANADA 514-525-5560	EOC NORMALIEN GmbH LUDENSCHIED GERMANY (02351) 437-0
ANCHOR LAMINA INC MADISON HEIGHTS, MI 800-543-3790				ANCHOR LAMINA INC KENTWOOD, MI 888-526-2467

**PREFERRED BUSINESS PARTNERS**

AJACS DIE SALES GRAND RAPIDS, MI 800-968-6868	DAYNE SUPPLY ONTARIO, CA 800-289-6387	RF FLOOD SUPPLY IVYLAND, PA 800-235-9950	TR GOLDSMITH TONAWANDA, NY 800-252-2501	IPSCO ATTLEBORO, MA 800-229-4044
MANUFACTURERS EQUIPMENT & SUPPLY FLINT, MI 800-373-2173	MATIS, INC CHICAGO RIDGE, IL 708-425-7100	MATZKA, INC WARREN, MI 810-755-6363	SCOTT SPECIAL TOOLS CHESTERFIELD, MO 314-532-7277	EL SIMETH CO MILWAUKEE, WI 800-837-9270
STANDARD DIE SUPPLY INDIANAPOLIS, IN 800-622-4485			SUP-R-DIE CLEVELAND, OH 800-821-9194	

Revised 01/01