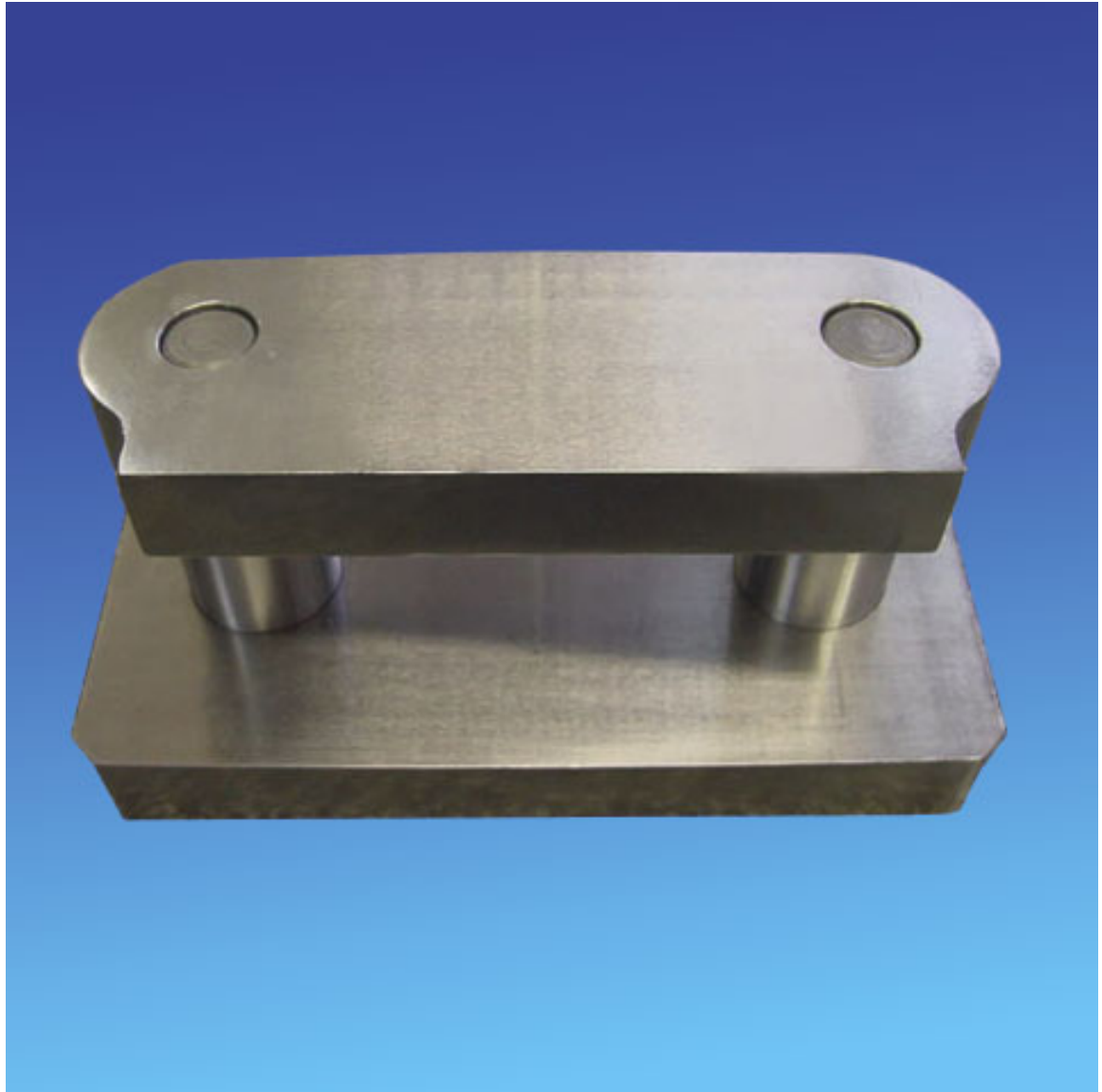


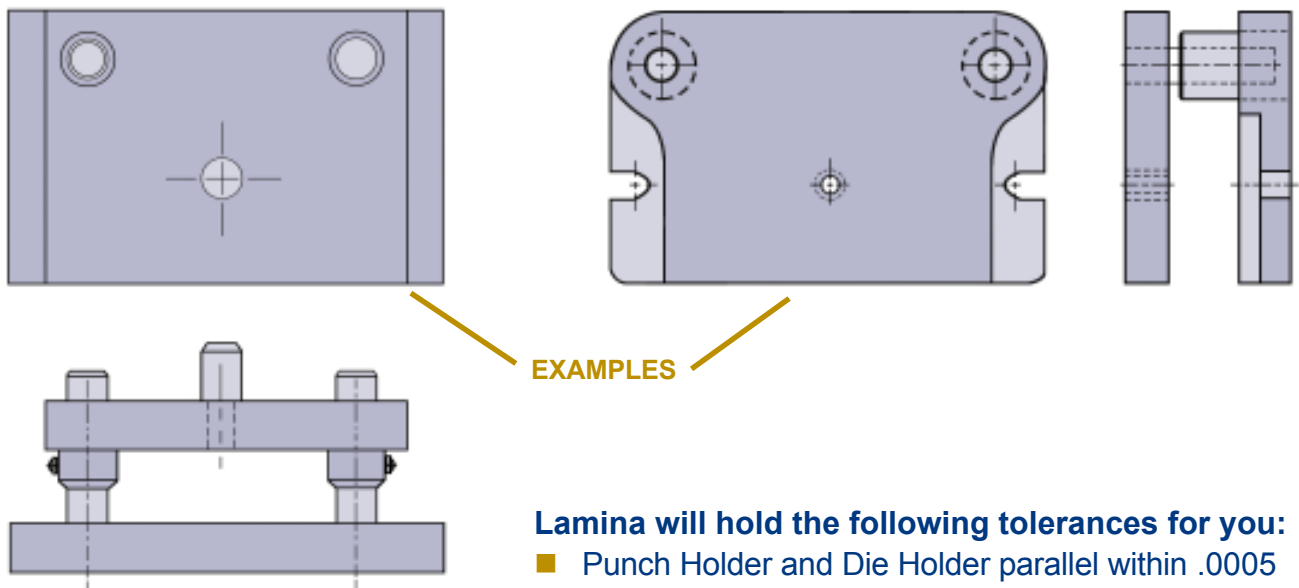
***Precision Die Sets Available***



***Contact Lamina Components for quoting and ordering information.***

# Lamina Precision Die Sets

***Let us quote your precision plain-bearing or ball-bearing die sets.***



**Lamina will hold the following tolerances for you:**

- Punch Holder and Die Holder parallel within .0005
- Die set assembly Left to Right, Front to Rear, parallel within .001
- Location of Pins and Bushings within .0005
- Plates upper and lower ground to .0003

**At this time Lamina will manufacture precision dies sets in 2-post, center-post and 4-post styles to your specifications.**

***Send your prints and requests for quotations to [sales@lamina.com](mailto:sales@lamina.com)***



 **Anchor Lamina Inc.**

PO Box 2540  
Farmington Hills, MI 48333-2540  
Phone: 800-652-6462 • 248-489-9122  
Fax: 248-553-6842  
E-mail: [sales@lamina.com](mailto:sales@lamina.com)