



**SLIDING MOLD
COMPONENTS**

TABLE OF CONTENTS

Introduction	3
L-Gibs Bronze Plated	4
V-Gibs Bronze Plated	5
L-Gibs Solid Bronze, Self-Lubricating, Imperial	6
L-Gibs Solid Bronze, Self-Lubricating, Metric.....	7
Square Gibs	8
Gib Assemblies	9
Gib Assembly Base Plates	10
Gib Assembly L-Gibs.....	11
Wear Strips, Bronze Plated, Imperial	12 & 13
Wear Strips, Bronze Plated, Metric	14
Side Strips, Bronze Plated, Imperial and Metric	15
Wear Strip Ways, Self-Lubricating	15
Wear Strips, Solid Bronze, Self-Lubricating, Imperial	16 & 17
Mold Components	18 & 19

Lamina, Inc. began as a lamination die manufacturer in 1938. During the years from 1938 to the present Lamina has evolved into a manufacturer and distributor of die and mold components. Even though we no longer make dies, we do understand the die and mold maker's needs and objectives.

We have made it our business to supply quality products in a timely manner at a reasonable price. We know how to compete in the marketplace and supply you with the products you need when you need them.

With the introduction of this catalog featuring sliding guide components for molds, we bring you a wider selection of wear products than in the past. It is our purpose to help you become more productive by helping to eliminate your downtime. With the products in stock, we will become your one-stop supplier and deliver the products you require each and every day.

Our catalog is presented in an easy-to-read format that will display the selection of products you need without a lot of extra data.

BRONZE-PLATED WEAR STRIPS & GIBS

Bronze-Plated Wear Strips & Gibs are made from C1018 extra fine grain cold drawn steel electroplated with a bronze alloy consisting of approximately 89% copper and 11% tin. The hardness is 180 BHn minimum. Lamina Bronze Plating has a natural lubricity and is ideal when used against hardened steel. We recommend any good grade of light machine oil suitable for machine way applications to extend the life of the wear surface.

The thickness of the bronze is .008 to .010". By using this thickness the bronze does not funnel out under heavy loads. The strength of steel backing keeps surface distortion to a minimum. Because most precision tool slide applications require either reworking or replacement if they develop so much as a .003 wear, Lamina Bronze thickness is more than adequate.

The superior wear properties of Lamina Bronze is not affected in working temperatures up to 400° F.

- Precision ground sliding surface
- Close tolerances
- Consistent quality control
- Low friction: Co-efficient of friction .2518
- Load factor 2700 PSI
- No galling or snow balling
- Magnetic - can be held on magnetic chuck
- Non-abrasive
- Non Seizing

ALUMINUM BRONZE SELF-LUBRICATING WEAR STRIPS & GIBS

Aluminum Bronze Self-Lubricating wear strips and gibbs are made from ASTM-C95400 continuous cast aluminum bronze with self-lubricating graphite plugs. These products can be used in applications up to 450° F (232°C).

C95400 aluminum bronze is a hard (170 BHn min.), strong material that resists wear, abrasion and deformation under high compressive loads.

Oil-impregnated graphite plugs cover 20-30% of the wear surface, providing a self lubricating film of graphite on the wear surface.

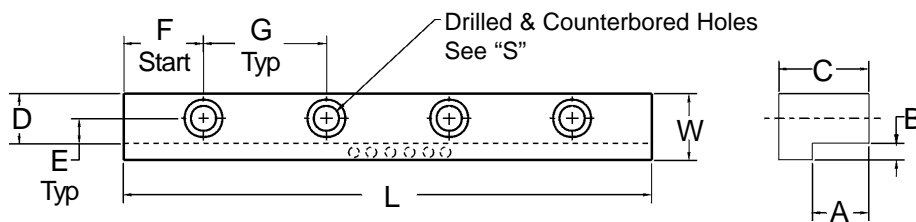
Applying a film or mist of light machine oil on new self-lubricating parts before use, will enhance the self-lubricating properties. (Do not use grease on graphite-plugged surfaces).

- Self Lubricating
- Precision ground wear surfaces
- Close tolerances
- Consistent quality control
- Resists abrasion
- Excellent wear characteristics

We would also like to remind you that these parts run best and last longer in a clean environment.

L-GIBS - IMPERIAL

Bronze Plated



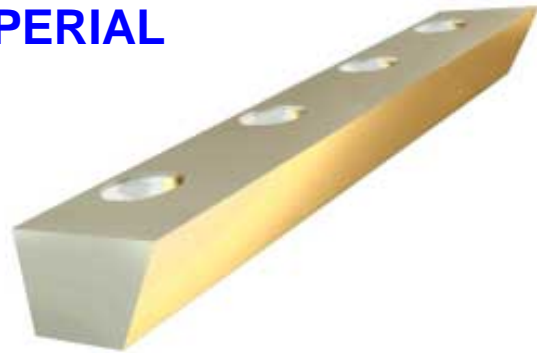
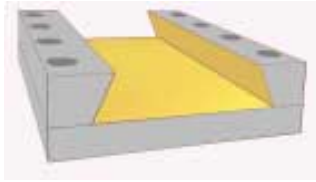
Precision ground sliding surface
 Standard L-Gibs with and without mounting holes
 Self Lubricating L-Gibs with and without mounting holes

Hole location $\pm .005$
 Unless noted all Dimensions $\pm .010$

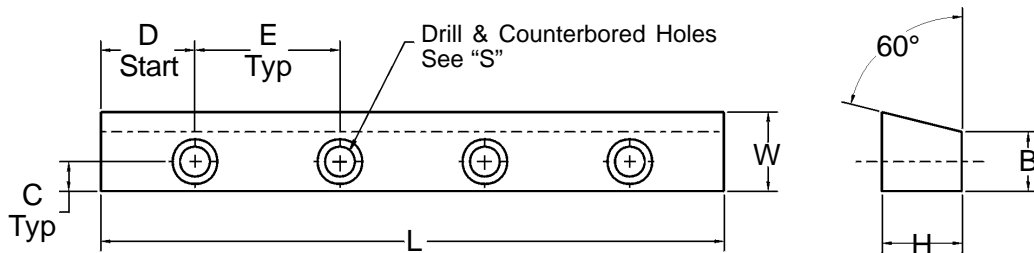
PART NUMBER	PART NUMBER (Self Lube)	L	W $\pm .002$	A GH $+ .001$	B GW $- .000$	C	D	E	F	G	S	
											Qty.	Size
L-4-6-3	N/A	5.25	.75	.312	.188	.485	.562	.281	.875	1.750	3	1/4"
L-4-6-4	N/A	7.00									4	
L-4-6-5	SLL-4-6-5	8.75									5	
L-4-6-5-NH	SLL-4-6-NH	8.75	NO MOUNTING HOLES									
L-5-8-3	N/A	6.00	1.00	.375	.250	.610	.750	.375	1.000	2.000	3	5/16"
L-5-8-4	N/A	8.00									4	
L-5-8-5	SLL-5-8-5	10.00									5	
L-5-8-5-NH	SLL-5-8-NH	10.00	NO MOUNTING HOLES									
L-7-10-3	N/A	7.50	1.25	.500	.375	.860	.875	.437	1.250	2.500	3	3/8"
L-7-10-4	N/A	10.00									4	
L-7-10-5	SLL-7-10-5	12.50									5	
L-7-10-5-NH	SLL-7-10-NH	12.50	NO MOUNTING HOLES									
L-10-12-3	N/A	9.00	1.50	.750	.500	1.235	1.000	.500	1.500	3.000	3	3/8"
L-10-12-4	N/A	12.00									4	
L-10-12-5	SLL-10-12-5	15.00									5	
L-10-12-5-NH	SLL-10-12-NH	15.00	NO MOUNTING HOLES									
L-12-16-4	N/A	16.00	2.00	.875	.625	1.470	1.375	.687	2.000	4.000	4	1/2"
L-12-16-6	SLL-12-16-6	24.00									6	
L-12-16-6-NH	SLL-12-16-NH	24.00									NO MOUNTING HOLES	
L-16-20-6	N/A	24.00	2.50	1.250	.750	1.970	1.750	.875	2.000	4.000	6	5/8"
L-16-20-8	SLL-16-20-8	32.00									8	
L-16-20-8-NH	SLL-16-20-NH	32.00									NO MOUNTING HOLES	
L-20-24-5	N/A	30.00	3.00	1.500	1.000	2.470	2.000	1.000	3.000	6.000	5	5/8"
L-20-24-8	SLL-20-24-8	48.00									8	
L-20-24-8-NH	SLL-20-24-NH	48.00									NO MOUNTING HOLES	

V-GIBS - IMPERIAL

Bronze Plated



Use Lamina V-Gibs and Wear Strips right from stock to create assemblies.



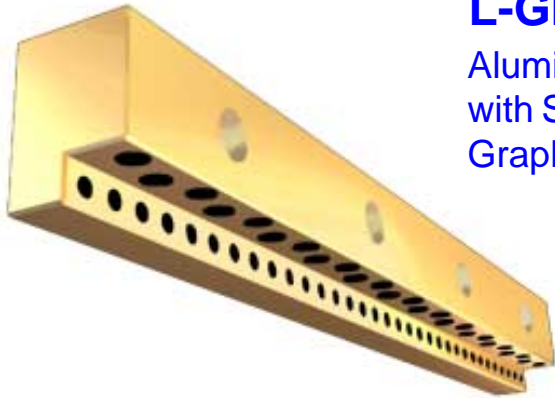
Precision ground sliding surface
Only Lamina stocks standard V-Gibs.

Hole location ± 0.005
Unless noted all Dimensions ± 0.010

PART NUMBER	L	W	H	B BASE WIDTH +.000 -.001	C	D	E $\pm .005$	S	
								Qty.	Size
V-5-7-3	5.25	.92	.62	.562	.281	.875	1.750	3	1/4"
V-5-7-4	7.00							4	
V-5-7-5	8.75							5	
V-6-10-3	6.00	1.18	.75	.750	.375	1.000	2.000	3	5/16"
V-6-10-4	8.00							4	
V-6-10-5	10.00							5	
V-7-11-3	7.50	1.38	.87	.875	.437	1.250	2.500	3	3/8"
V-7-11-4	10.00							4	
V-7-11-5	12.50							5	
V-8-12-3	9.00	1.70	1.00	1.125	.562	1.500	3.000	3	3/8"
V-8-12-4	12.00							4	
V-8-12-5	15.00							5	
V-10-16-4	16.00	1.97	1.25	1.250	.625	2.000	4.000	4	1/2"
V-10-16-6	24.00							6	
V-12-20-6	24.00	2.49	1.50	1.625	.812	2.000	4.000	6	5/8"
V-12-20-8	32.00							8	
V-14-24-5	30.00	3.01	1.75	2.000	1.000	3.000	6.000	5	5/8"
V-14-24-8	48.00							8	
V-16-32-8	48.00	3.90	2.00	2.750	1.375	3.000	6.000	8	3/4"

Lamina Bronze electroplated on steel has achieved universal acceptance for wear applications. The Lamina principle of using bronze for wear surfaces and steel for strength is seen on many products throughout the Lamina product line.

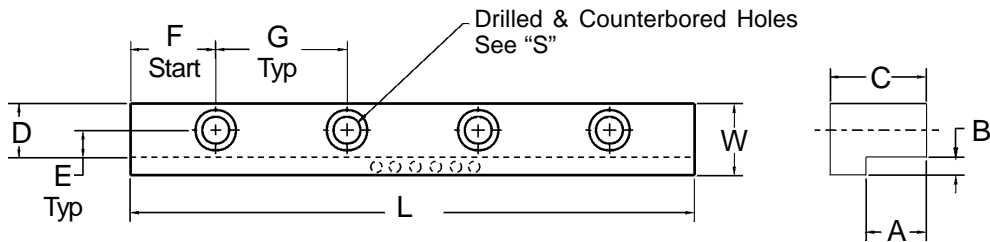
- Plating thickness: .008 - .010
- One piece construction with pre-drilled and counter bored screw holes, machined complete.



L-GIB - IMPERIAL

Aluminum Bronze
with Self-Lubricating
Graphite Plugs

PLASTICS INJECTION MOLDS
SPECIAL MACHINES
PRESS GIBBING
SPECIAL SLIDE APPLICATIONS



Precision ground sliding surface

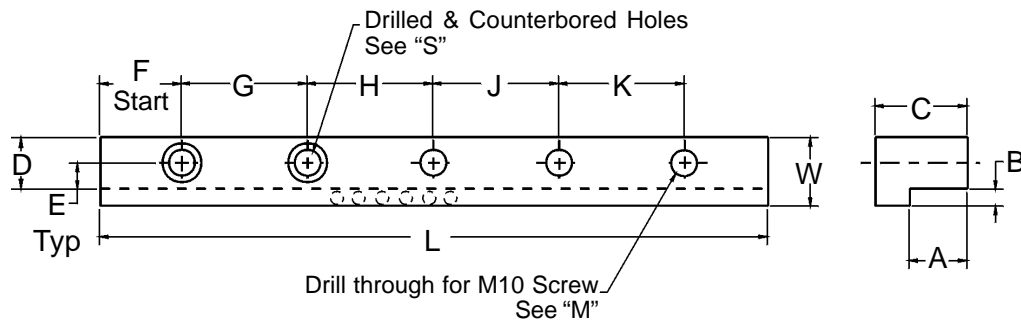
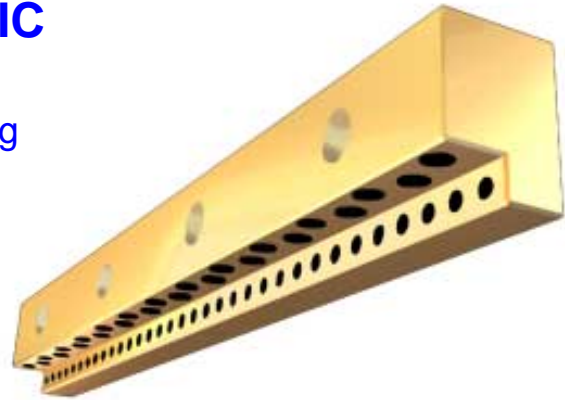
For L-Gibs without mounting holes use "N" at the end of the part number.

Unless noted all Dimensions $\pm .010$

PART NUMBER	L	W	A	B	C	D	E	F	G	M	
			GH	GW						Qty	Size
L2LG42G	5.25	.75	.312	.188	.75	.56	.280	.875	1.750	3	1/4"
L2LG56G	7.00							.875		4	
L2LG70G	8.75							.875		5	
L3LG48G	6.00	1.00	.375	.250	.75	.75	.375	1.000	2.000	3	5/16"
L3LG64G	8.00							1.000		4	
L3LG80G	10.00							1.000		5	
L4LG48G	6.00	1.25	.500	.375	.88	.87	.438	1.000	2.500	3	3/8"
L4LG60G	7.50							1.250		3	
L4LG80G	10.00							1.250		4	
L4LG100G	12.50							1.250		5	
L6LG48G	6.00	1.50	.750	.500	1.25	1.00	.500	1.000	3.000	3	3/8"
L6LG72G	9.00							1.500		3	
L6LG96G	12.00							1.500		4	
L6LG120G	15.00							1.500		5	
L7LG64G	8.00	2.00	.875	.625	1.50	1.37	.688	1.000	2.000	4	1/2"
L7LG96G	12.00							1.500		4	
L7LG128G	16.00							2.000		4	
L10LG96G	12.00	2.50	1.250	.750	2.00	1.75	.875	1.500	3.000	4	5/8"
L10LG144G	18.00							2.250		4	
L10LG192G	24.00							3.000		4	
L12LG96G	12.00	3.00	1.500	1.000	2.50	2.00	1.000	1.500	3.000	4	5/8"
L12LG144G	18.00							2.250		4	
L12LG192G	24.00							3.000		4	

L-GIB - METRIC

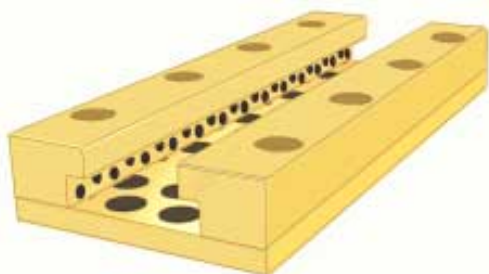
Aluminum Bronze
with Self-Lubricating
Graphite Plugs



Precision ground sliding surface

Unless noted all Dimensions $\pm 0.25\text{mm}$

PART NUMBER	L	W	A	B	C	D	E	F	G	H	J	K	QUANTITY		M & S Size
			GH	GW									M	S	
L15LG100G	100	32	15	10	30	22	11	20	-	-	-	60	2	-	M10
L15LG150G	150								-	55	-	55	3	-	
L15LG200G	200								55	-	50	55	4	-	
L15LG250G	250								70	-	70	70	4	-	
L25LG200G	200	50	25	22	45	28	14	20	55	-	50	55	-	4	
L25LG250G	250								70	-	70	70	-	4	
L25LG300G	300								65	65	65	65	-	5	
L25LG350G	350								80	75	75	80	-	5	



Lamina off-the-shelf L-Gibs and Wear Strips can be put together to make your own custom assemblies.

The variety of sizes offered make custom gib and slide assembly construction fast and easy.

During normal sliding action, graphite produces a lubricating film across the entire wear surface.

It is recommended that a mist of light oil be wiped on sliding surface prior to assembly.

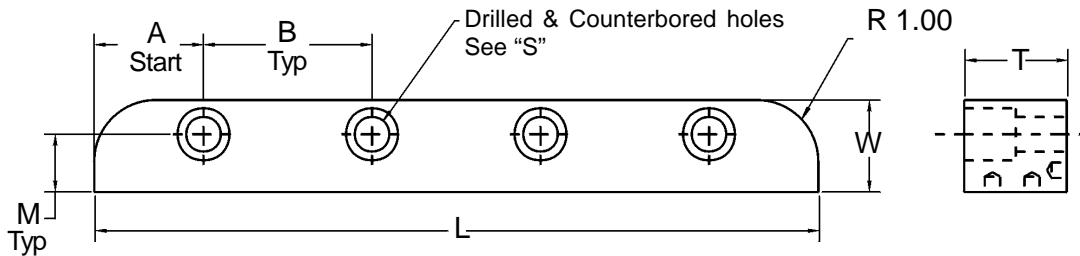
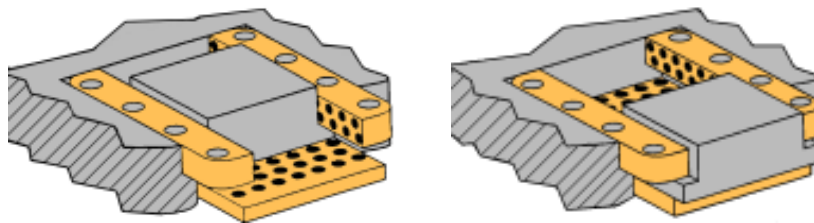
In stock, ready to ship.

One piece construction with pre-drilled and counter bored screw holes, machined complete.



SQUARE GIBS

Aluminum Bronze with Self-Lubricating Graphite Plugs



Precision ground sliding surface

Unless noted all Dimensions ± 0.010

PART NUMBER	L	W ± 0.005	T $+0.001 -0.000$	A	B ± 0.005	M ± 0.005	S	
							Qty	Size
L6SG32G	4.00	1.00	.75	1.000	2.000	.625	2	3/8"
L6SG40G	5.00				1.500		3	
L6SG48G	6.00				2.000		3	
L6SG64G	8.00				2.000		4	
L6SG80G	10.00				2.000		5	
L6SG96G	12.00				2.000		6	
L6SG96NG	12.00	NO MOUNTING HOLES						
L8SG32G	4.00	1.25	1.00	1.000	2.000	.875	2	3/8"
L8SG40G	5.00				1.500		3	
L8SG48G	6.00				2.000		3	
L8SG64G	8.00				2.000		4	
L8SG80G	10.00				2.000		5	
L8SG96G	12.00				2.000		6	
L8SG96NG	12.00	NO MOUNTING HOLES						
L12SG64G	8.00	2.00	1.50	1.500	2.500	1.250	3	5/8"
L12SG80G	10.00			1.250	2.500		4	
L12SG96G	12.00			1.500	3.000		4	
L12SG96NG	12.00	NO MOUNTING HOLES						

Create custom gib assemblies using Lamina component parts.

These products are in stock in our own warehouses and at many of our master stocking distributors!

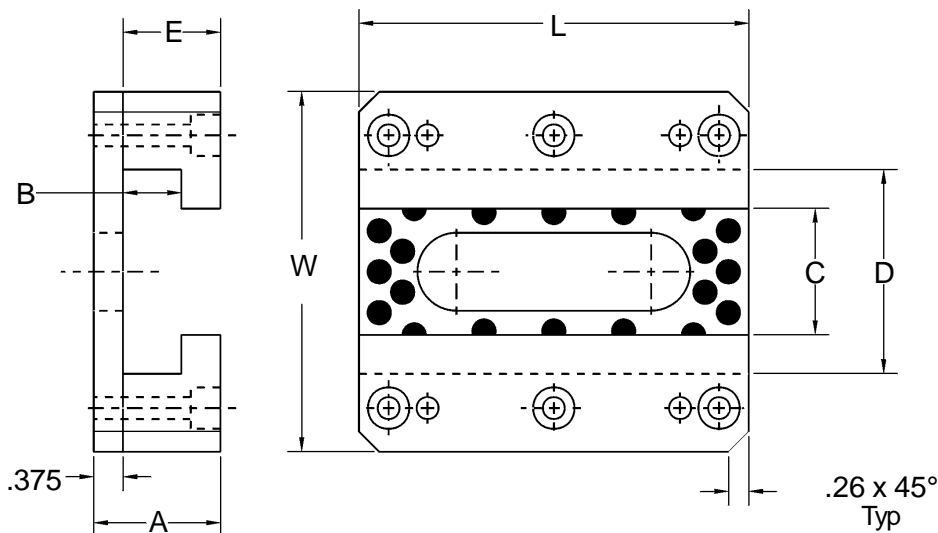
GIB ASSEMBLIES

Aluminum Bronze with Self-Lubricating Graphite Plugs



PLASTICS INJECTION MOLDS
SPECIAL MACHINES
PRESS GIBBING
SPECIAL SLIDE APPLICATIONS

Complete - Ready to use, out of the box.



Lamina Gib Assemblies consist of 1 base plate, 2 L-Gibs, assembly screws and dowel pins.

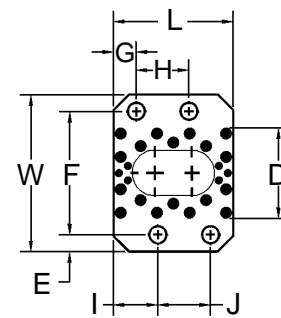
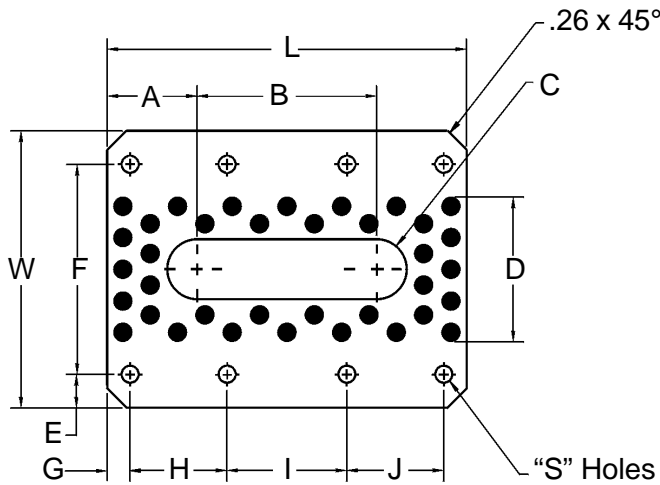
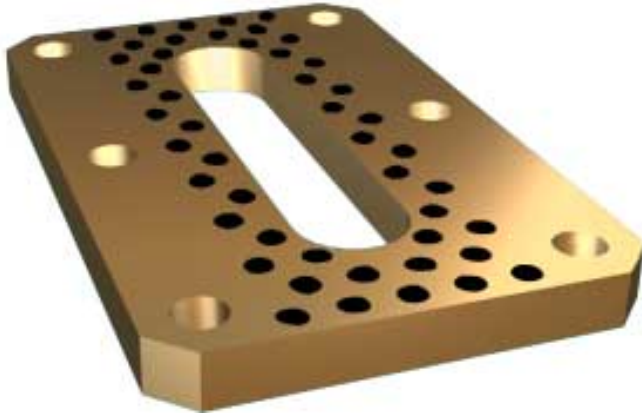
L-Gibs are drilled and counterbored for screws and are spot drilled for dowels. Refer to page 11 for dimensional information.

Precision ground sliding surface

PART NUMBER	L	W +.000 -.005	A	B	C	D	E	SOCKET HEAD CAP SCREWS		LOCATING DOWEL PINS	
								Qty	Size	Qty	Size
L2GA16G	2.00	2.620	1.12	.312	1.12	1.50	.75	4	1/4-20x1-1/4	4	1/4 x1-1/2
L2GA24G	3.00										
L2GA32G	4.00										
L3GA24G	3.00	3.120	1.12	.375	1.12	1.62	.75	4	5/16-18x1-1/2	4	1/4 x1-1/2
L3GA32G	4.00										
L3GA40G	5.00										
L4GA24G	3.00	4.120	1.25	.500	1.62	2.37	.88	4	5/16-18x1-1/2	4	1/4 x1-1/2
L4GA32G	4.00										
L4GA40G	5.00										
L4GA48G	6.00										
L6GA32G	4.00	4.620	1.62	.750	1.62	2.62	1.25	6	5/16-18x1-3/4	4	1/4 x1-3/4
L6GA40G	5.00										
L6GA48G	6.00										

BASE PLATES FOR GIB ASSEMBLIES

Aluminum Bronze with Self Lubricating Graphite Plugs



L2GAB16G
HOLE LOCATIONS

Thickness = .375"

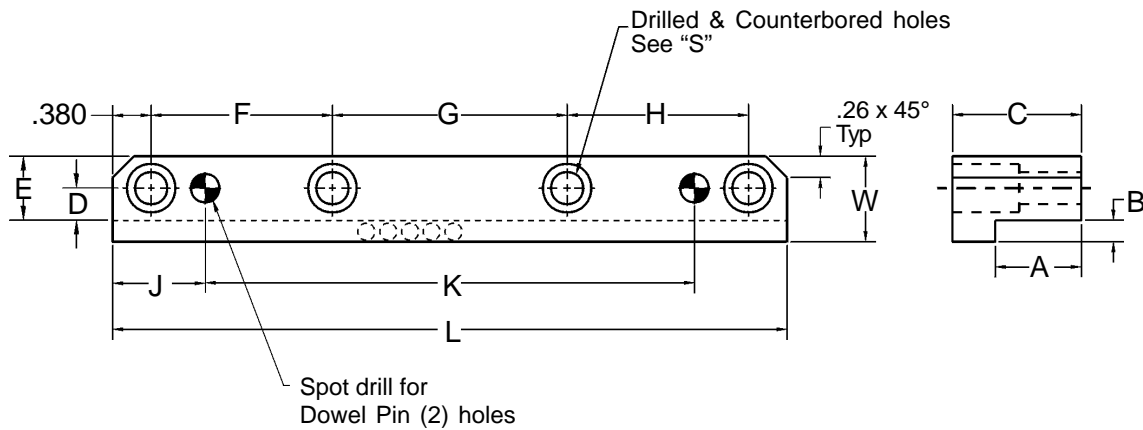
Precision ground sliding surface

Unless noted all Dimensions ±.010

PART NUMBER	L	W +.000 -.005	A	B	C	D	E	F	G	H	I	J	S	
													QTY	SIZE
L2GAB16G	2.00	2.620	.69	.62	.38	1.50	.280	2.060	.380	.880	.740	.880	4	1/4"
L2GAB24G	3.00		.88	1.24						-	-	2.240	4	
L2GAB32G	4.00		1.00	2.00						1.620	-	1.620	6	
L3GAB24G	3.00	3.120	.88	1.24	.38	1.68	.370	2.380	.380	-	-	2.240	4	5/16"
L3GAB32G	4.00		1.00	2.00						1.620	-	1.620	6	
L3GAB40G	5.00		1.12	2.76						2.120	-	2.120	6	
L4GAB24G	3.00	4.120	1.00	1.00	.50	2.25	.495	3.130	.380	-	-	2.240	4	5/16"
L4GAB32G	4.00		1.12	1.76						1.620	-	1.620	6	
L4GAB40G	5.00		1.25	2.50						2.120	-	2.120	6	
L4GAB48G	6.00		1.50	3.00						1.620	2.000	1.620	8	
L6GAB32G	4.00	4.620	1.12	1.76	.50	2.41	.560	3.500	.380	1.620	-	1.620	6	5/16"
L6GAB40G	5.00		1.25	2.50						2.120	-	2.120	6	
L6GAB48G	6.00		1.50	3.00						1.620	2.000	1.620	8	

L-GIBS FOR GIB ASSEMBLIES

Aluminum Bronze with Self Lubricating Graphite Plugs



Precision ground sliding surface

Unless noted all Dimensions ±.010

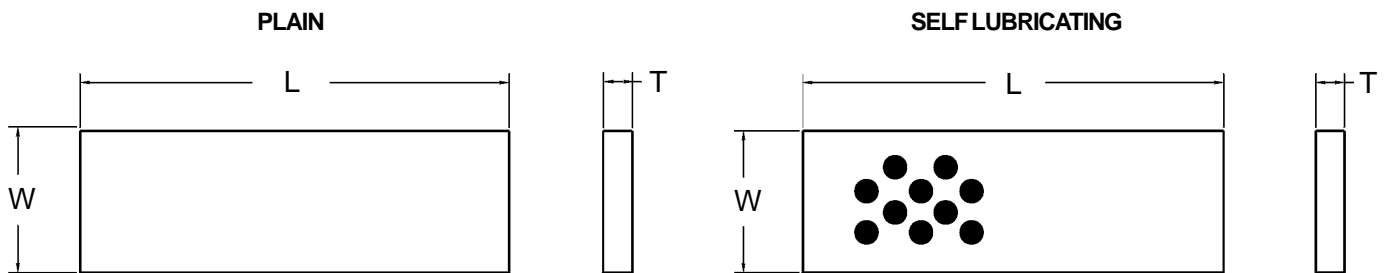
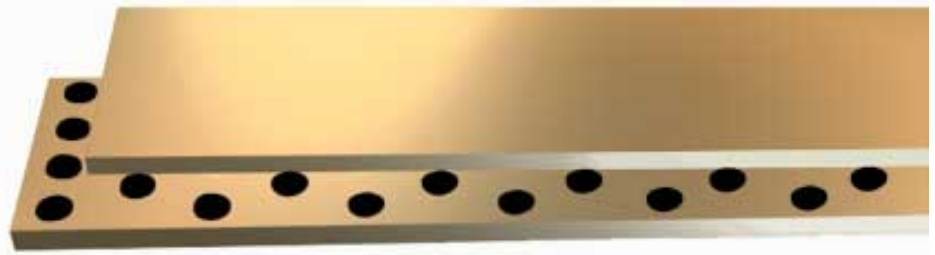
PART NUMBER	L	W +.001 -.005	A		C	D ±.005	E +.000 -.005	F	G	H	J	K	S		
			GH +.001	B GW -.000									Qty	Size	
L2GAL16G	2.00	.75	.312	.188	.75	.280	.56	-	.880	-	.79	.95	2	1/4	
L2GAL24G	3.00							-	-	2.240	.88	1.24	2		
L2GAL32G	4.00							1.620	-	1.620	.88	2.24	3		
L3GAL24G	3.00	1.00	.375	.250	.75	.380	.75	-	-	2.240	.88	1.24	2	5/16	
L3GAL32G	4.00							1.620	-	1.620		.88	2.24		3
L3GAL40G	5.00							2.120	-	2.120		.88	3.24		3
L4GAL24G	3.00	1.25	.500	.375	.88	.380	.88	-	-	2.240	.88	1.24	2		
L4GAL32G	4.00							1.620	-	1.620		.88	2.24		3
L4GAL40G	5.00							2.120	-	2.120		.88	3.24		3
L4GAL48G	6.00							1.620	2.000	1.620		.88	4.24	4	
L6GAL32G	4.00	1.50	.750	.500	1.25	.440	1.00	1.620	-	1.620	.88	2.24	3		
L6GAL40G	5.00							2.120	-	2.120		.88	3.24	3	
L6GAL48G	6.00							1.620	2.000	1.620		.88	4.24	4	



BRONZE PLATED WEAR STRIPS - Bronze Plated

Lamina bronze plated wear strips are offered cut to your exact length or in 96" lengths.

BRONZE PLATED		T THICKNESS +.000 -.002	W WIDTH +.000 -.060	BRONZE PLATED		T THICKNESS +.000 -.002	W WIDTH +.000 -.060	BRONZE PLATED		T THICKNESS +.000 -.002	W WIDTH +.000 -.060
PART NUMBER by the inch	PART NUMBER 96" length			PART NUMBER by the inch	PART NUMBER 96" length			PART NUMBER by the inch	PART NUMBER 96" length		
FP-1/8 X 1	PPF013100	1/8"	1	FP-5/16-X-1	PPF031100	5/16"	1	FP-5/8-X-1	PPF063100	5/8"	1
FP-1/8-X-1-1/4	PPF013125		1 -1/4	FP-5/16-X-1-1/4	PPF031125		1 -1/4	FP-5/8-X-1-1/4	PPF063125		1 -1/4
FP-1/8-X-1-1/2	PPF013150		1 -1/2	FP-5/16-X-1-1/2	PPF031150		1 -1/2	FP-5/8-X-1-1/2	PPF063150		1 -1/2
FP-1/8-X-1-3/4	PPF013175		1 -3/4	FP-5/16-X-1-3/4	PPF031175		1 -3/4	FP-5/8-X-1-3/4	PPF063175		1 -3/4
FP-1/8-X-2	PPF013200		2	FP-5/16-X-2	PPF031200		2	FP-5/8-X-2	PPF063200		2
FP-1/8-X-2-1/2	PPF013250		2-1/2	FP-5/16-X-2-1/2	PPF031250		2-1/2	FP-5/8-X-2-1/2	PPF063250		2-1/2
FP-1/8-X-3	PPF013300		3	FP-5/16-X-3	PPF031300		3	FP-5/8-X-3	PPF063300		3
FP-1/8-X-3-1/2	PPF013350		3-1/2	FP-5/16-X-3-1/2	PPF031350		3-1/2	FP-5/8-X-3-1/2	PPF063350		3-1/2
FP-1/8-X-4	PPF013400		4	FP-5/16-X-4	PPF031400		4	FP-5/8-X-4	PPF063400		4
FP-1/8-X-4-1/2	PPF013450		4-1/2	FP-5/16-X-4-1/2	PPF031450		4-1/2	FP-5/8-X-4-1/2	PPF063450		4-1/2
FP-1/8-X-5	PPF013500		5	FP-5/16-X-5	PPF031500		5	FP-5/8-X-5	PPF063500		5
FP-1/8-X-6	PPF013600		6	FP-5/16-X-6	PPF031600		6	FP-5/8-X-6	PPF063600		6
FP-3/16-X-1	PPF019100	3/16"	1	FP-5/16-X-8	PPF031800	3/8"	8	FP-5/8-X-8	PPF063800	3/4"	8
FP-3/16-X-1-1/4	PPF019125		1 -1/4	FP-5/16-X-10	PPF0311000		10	FP-5/8-X-10	PPF0631000		10
FP-3/16-X-1-1/2	PPF019150		1 -1/2	FP-5/16-X-12	PPF0311200		12	FP-5/8-X-12	PPF0631200		12
FP-3/16-X-1-3/4	PPF019175		1 -3/4	FP-3/8-X-1	PPF038100		1	FP-3/4-X-1	PPF075100		1
FP-3/16-X-2	PPF019200		2	FP-3/8-X-1-1/4	PPF038125		1 -1/4	FP-3/4-X-1-1/4	PPF075125		1 -1/4
FP-3/16-X-2-1/2	PPF019250		2-1/2	FP-3/8-X-1-1/2	PPF038150		1 -1/2	FP-3/4-X-1-1/2	PPF075150		1 -1/2
FP-3/16-X-3	PPF019300		3	FP-3/8-X-1-3/4	PPF038175		1 -3/4	FP-3/4-X-1-3/4	PPF075175		1 -3/4
FP-3/16-X-3-1/2	PPF019350		3-1/2	FP-3/8-X-2	PPF038200		2	FP-3/4-X-2	PPF075200		2
FP-3/16-X-4	PPF019400		4	FP-3/8-X-2-1/2	PPF038250		2-1/2	FP-3/4-X-2-1/2	PPF075250		2-1/2
FP-3/16-X-4-1/2	PPF019450		4-1/2	FP-3/8-X-3	PPF038300		3	FP-3/4-X-3	PPF075300		3
FP-3/16-X-5	PPF019500		5	FP-3/8-X-3-1/2	PPF038350		3-1/2	FP-3/4-X-3-1/2	PPF075350		3-1/2
FP-3/16-X-6	PPF019600		6	FP-3/8-X-4	PPF038400		4	FP-3/4-X-4	PPF075400		4
FP-3/16-X-8	PPF019800	8	FP-3/8-X-4-1/2	PPF038450	4-1/2	FP-3/4-X-4-1/2	PPF075450	4-1/2			
FP-1/4-X-1	PPF025100	1/4"	1	FP-3/8-X-5	PPF038500	1/2"	5	FP-3/4-X-5	PPF075500	1"	5
FP-1/4-X-1-1/4	PPF025125		1 -1/4	FP-3/8-X-6	PPF038600		6	FP-3/4-X-6	PPF075600		6
FP-1/4-X-1-1/2	PPF025150		1 -1/2	FP-3/8-X-8	PPF038800		8	FP-3/4-X-8	PPF075800		8
FP-1/4-X-1-3/4	PPF025175		1 -3/4	FP-3/8-X-10	PPF0381000		10	FP-3/4-X-10	PPF0751000		10
FP-1/4-X-2	PPF025200		2	FP-3/8-X-12	PPF0381200		12	FP-3/4-X-12	PPF0751200		12
FP-1/4-X-2-1/2	PPF025250		2-1/2	FP-1/2-X-1	PPF050100		1	FP-1-X-1	PPF100100		1
FP-1/4-X-3	PPF025300		3	FP-1/2-X-1-1/4	PPF050125		1 -1/4	FP-1-X-1-1/4	PPF100125		1 -1/4
FP-1/4-X-3-1/2	PPF025350		3-1/2	FP-1/2-X-1-1/2	PPF050150		1 -1/2	FP-1-X-1-1/2	PPF100150		1 -1/2
FP-1/4-X-4	PPF025400		4	FP-1/2-X-1-3/4	PPF050175		1 -3/4	FP-1-X-1-3/4	PPF100175		1 -3/4
FP-1/4-X-4-1/2	PPF025450		4-1/2	FP-1/2-X-2	PPF050200		2	FP-1-X-2	PPF100200		2
FP-1/4-X-5	PPF025500		5	FP-1/2-X-2-1/2	PPF050250		2-1/2	FP-1-X-2-1/2	PPF100250		2-1/2
FP-1/4-X-6	PPF025600		6	FP-1/2-X-3	PPF050300		3	FP-1-X-3	PPF100300		3
FP-1/4-X-8	PPF025800	8	FP-1/2-X-3-1/2	PPF050350	3-1/2	FP-1-X-3-1/2	PPF100350	3-1/2			
FP-1/4-X-10	PPF0251000	10	FP-1/2-X-4	PPF050400	4	FP-1-X-4	PPF100400	4			
FP-1/4-X-12	PPF0251200	12	FP-1/2-X-4-1/2	PPF050450	4-1/2	FP-1-X-4-1/2	PPF100450	4-1/2			
Create custom assemblies using standard Lamina component parts.				FP-1/2-X-5	PPF050500	5	FP-1-X-5	PPF100500	5		
				FP-1/2-X-6	PPF050600	6	FP-1-X-6	PPF100600	6		
				FP-1/2-X-8	PPF050800	8	FP-1-X-8	PPF100800	8		
				FP-1/2-X-10	PPF0501000	10	FP-1-X-10	PPF1001000	10		
				FP-1/2-X-12	PPF0501200	12	FP-1-X-12	PPF1001200	12		



Maximum length 96"

Maximum Length 48"

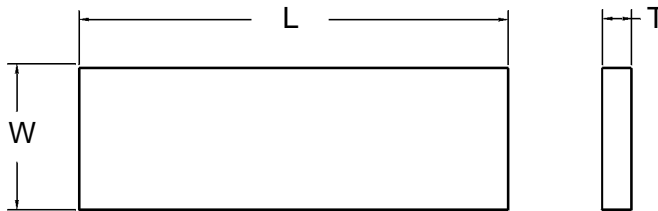
- In order to be flat this material must be fastened to a flat surface. Parallel .001 within 8'.
- Thickness of Bronze: .008 to .010
- Precision ground top and bottom
- Milled edges

BRONZE PLATED WEAR STRIPS - Bronze Plated and Self Lubricating

SELF LUBRICATING		T THICKNESS +.000 -.002	W WIDTH +.000 -.060	SELF LUBRICATING		T THICKNESS +.000 -.002	W WIDTH +.000 -.060	SELF LUBRICATING		T THICKNESS +.000 -.002	W WIDTH +.000 -.060
PART NUMBER by the inch	PART NUMBER 48" length			PART NUMBER by the inch	PART NUMBER 48" length			PART NUMBER by the inch	PART NUMBER 48" length		
SLFP025-100	SLF025100	1/4"	1	SLFP050-100	SLF050100	1/2"	1	SLFP100-100	SLF100100	1"	1
SLFP025-150	SLF025150		1-1/2	SLFP050-150	SLF050150		1-1/2	SLFP100-150	SLF100150		1-1/2
SLFP025-200	SLF025200		2	SLFP050-200	SLF050200		2	SLFP100-200	SLF100200		2
SLFP025-250	SLF025250		2-1/2	SLFP050-250	SLF050250		2-1/2	SLFP100-250	SLF100250		2-1/2
SLFP025-300	SLF025300		3	SLFP050-300	SLF050300		3	SLFP100-300	SLF100300		3
SLFP025-400	SLF025400		4	SLFP050-400	SLF050400		4	SLFP100-400	SLF100400		4
SLFP025-500	SLF025500	5	SLFP050-500	SLF050500	5	SLFP100-500	SLF100500	5			
SLFP025-600	SLF025600	6	SLFP050-600	SLF050600	6	SLFP100-600	SLF100600	6			
SLFP038-100	SLF038100	3/8"	1	SLFP075-100	SLF075100	3/4"	1	These products are in stock at Lamina and at Lamina stocking distributors throughout the world.			
SLFP038-150	SLF038150		1-1/2	SLFP075-150	SLF075150		1-1/2				
SLFP038-200	SLF038200		2	SLFP075-200	SLF075200		2				
SLFP038-250	SLF038250		2-1/2	SLFP075-250	SLF075250		2-1/2				
SLFP038-300	SLF038300		3	SLFP075-300	SLF075300		3				
SLFP038-400	SLF038400		4	SLFP075-400	SLF075400		4				
SLFP038-500	SLF038500	5	SLFP075-500	SLF075500	5						
SLFP038-600	SLF038600	6	SLFP075-600	SLF075600	6						

Lamina bronze plated self-lubricating wear strips are offered cut to your length or in 48" lengths. We suggest cutting these strips in 1/2" increments. Avoid cutting through the plugs.

METRIC FP WEAR STRIPS - Bronze Plated



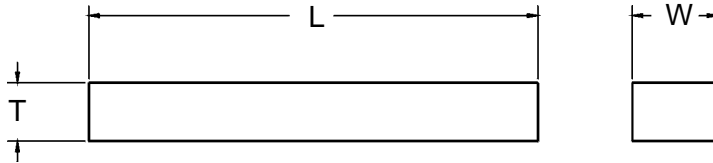
Maximum length 2438 mm

- In order to be flat this material must be fastened to a flat surface. Parallel 0.025 within 2400mm.
- Thickness of Bronze: 0.20 to 0.25
- Precision ground top and bottom
- Milled edges

BRONZE PLATED		T THICKNESS +0.0 -0.051	W WIDTH +0.0 -1.524	BRONZE PLATED		T THICKNESS +0.0 -0.051	W WIDTH +0.0 -1.524	BRONZE PLATED		T THICKNESS +0.0 -0.051	W WIDTH +0.0 -1.524
PART NUMBER by 25mm	PART NUMBER 2438mm length			PART NUMBER by 25mm	PART NUMBER 2438mm length			PART NUMBER by 25mm	PART NUMBER 2438mm length		
FP-4MM-X-25	MFP04025	4mm	25mm	FP-8MM-X-100	MFP08100	8mm	100mm	FP-15MM-X-60	MFP15060	15mm	60mm
FP-4MM-X-30	MFP04030		30mm	FP-8MM-X-125	MFP08125		125mm	FP-15MM-X-75	MFP15075		75mm
FP-4MM-X-35	MFP04035		35mm	FP-10MM-X-25	MFP10025		25mm	FP-15MM-X-100	MFP15100		100mm
FP-4MM-X-40	MFP04040		40mm	FP-10MM-X-30	MFP10030		30mm	FP-15MM-X-125	MFP15125		125mm
FP-4MM-X-60	MFP04060		60mm	FP-10MM-X-35	MFP10035		35mm	FP-15MM-X-150	MFP15150		150mm
FP-4MM-X-100	MFP04100		100mm	FP-10MM-X-40	MFP10040		40mm	FP-20MM-X-30	MFP20030		30mm
FP-5MM-X-25	MFP05025	5mm	25mm	FP-10MM-X-50	MFP10050	10mm	50mm	FP-20MM-X-50	MFP20050	20mm	50mm
FP-5MM-X-30	MFP05030		30mm	FP-10MM-X-60	MFP10060		60mm	FP-20MM-X-60	MFP20060		60mm
FP-5MM-X-40	MFP05040		40mm	FP-10MM-X-75	MFP10075		75mm	FP-20MM-X-75	MFP20075		75mm
FP-5MM-X-75	MFP05075		75mm	FP-10MM-X-100	MFP10100		100mm	FP-20MM-X-100	MFP20100		100mm
FP-5MM-X-100	MFP05100		100mm	FP-10MM-X-125	MFP10125		125mm	FP-25MM-X-25	MFP25025		25mm
FP-6MM-X-25	MFP06025		6mm	25mm	FP-10MM-X-150		MFP10150	12mm	150mm		FP-25MM-X-100
FP-6MM-X-30	MFP06030	30mm		FP-12MM-X-50	MFP12050	50mm	Lamina is the only manufacturer of bronze plated wear strips.				
FP-6MM-X-40	MFP06040	40mm		FP-12MM-X-75	MFP12075	75mm					
FP-6MM-X-50	MFP06050	50mm		FP-12MM-X-100	MFP12100	100mm					
FP-6MM-X-60	MFP06060	60mm		FP-12MM-X-125	MFP12125	125mm					
FP-6MM-X-75	MFP06075	75mm		FP-12MM-X-150	MFP12150	150mm					
FP-8MM-X-25	MFP08025	8mm	25mm	FP-12MM-X-200	MFP12200	15mm		200mm			
FP-8MM-X-60	MFP08060		60mm	FP-15MM-X-25	MFP15025		25mm				
FP-8MM-X-75	MFP08075		75mm	FP-15MM-X-40	MFP15040		40mm				



INCH SP SIDE STRIP



Maximum length 96" (2438mm)

- Precision ground all four sides

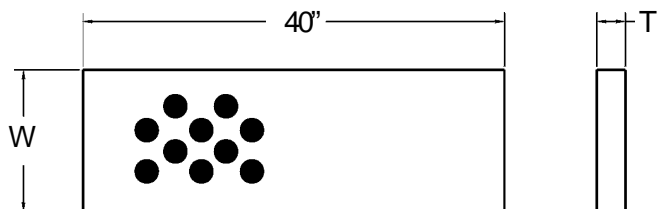
BRONZE PLATED		T THICK-NESS -.018 to -.020	W WIDTH +.000 -.005
PART NUMBER by the inch	PART NUMBER 96" length		
SP-1/2-X-1	SPF050100	1/2	1
SP-1/2-X-1-1/2	SPF050150		1-1/2
SP-5/8-X-1	SPF063100	5/8	1
SP-5/8-X-2	SPF063200		2
SP-3/4-X-1	SPF075100	3/4	1
SP-3/4-X-1-1/2	SPF075150		1-1/2
SP-3/4-X-2	SPF075200		2
SP-1-X-1-1/2	SPF100150	1	1-1/2
SP-1-X-2	SPF100200		2
SP-1-X-3	SPF100300		3
SP-1-1/4-X-2	SPF125200	1-1/4	2
SP-1-1/4-X-3	SPF125300		3
SP-1-1/2-X-2	SPF150200	1-1/2	2
SP-1-1/2-X-2-1/2	SPF150250		2-1/2
SP-2-X-2	SPF200200	2	2

METRIC SIDE STRIP

BRONZE PLATED		T THICK-NESS -.45 to -.50	W WIDTH +.0 -.12
PART NUMBER by 25mm	PART NUMBER 2438 length		
SP-15MM-X-25MM	MSP15025	15	25
SP-25MM-X-37MM	MSP25037	25	37

WEAR STRIP WAYS - SOLID BRONZE WITH GRAPHITE PLUGS

PART NUMBER	T ±.002	W	PLUG DIAMETER
L312320NG	0.375	1.50	5/16
L316320NG		2.00	3/8
L320320NG		2.50	3/8
L324320NG		3.00	1/2
L412320NG	0.500	1.50	5/16
L416320NG		2.00	3/8
L420320NG		2.50	3/8
L424320NG		3.00	1/2
L432320NG	0.625	4.00	1/2
L516320NG		2.00	3/8
L524320NG		3.00	1/2
L532320NG		4.00	1/2
L616320NG	0.750	2.00	3/8
L624320NG		3.00	1/2
L632320NG		4.00	1/2
L640320NG		5.00	1/2



Call Lamina Customer Service for hole pattern.



WEAR STRIPS - IMPERIAL

Aluminum Bronze with
Self-Lubricating Graphite Plugs

PLASTICS INJECTION MOLDS
SPECIAL MACHINES
All other applications where slide
friction requires lubrication

Precision ground sliding surface

PART NUMBERS (THICKNESS)				W WIDTH	L LENGTH	SCREW HOLES		HOLE LOCATION ±.005							
1/4"	3/8"	1/2"	5/8"			AMT	PAT	A	B	C	D	E	F	G	H
L28-32	L38-32	-	-	1.00	4.00	2	A	1.00	3.00	-	-	-	-	.50	-
L28-40	L38-40	-	-		5.00	3		.50	2.50	4.50	-	-	-		
L28-48	L38-48	-	-		6.00	3		1.00	3.00	5.00	-	-	-		
L28-64	L38-64	-	-		8.00	4		1.00	3.00	5.00	7.00	-	-		
L28-80	L38-80	-	-		10.00	5		1.00	3.00	5.00	7.00	9.00	-		
L28-96	L38-96	-	-		12.00	6		1.00	3.00	5.00	7.00	9.00	11.00		
-	-	L412-24	L512-24	1.50	3.00	2	A	.50	2.50	-	-	-	-	.75	-
L212-32	L312-32	L412-32	L512-32		4.00	2		1.00	3.00	-	-	-	-		
L212-40	L312-40	L412-40	L512-40		5.00	3		.50	2.50	4.50	-	-	-		
L212-48	L312-48	L412-48	L512-48		6.00	3		1.00	3.00	5.00	-	-	-		
L212-64	L312-64	L412-64	L512-64		8.00	4		1.00	3.00	5.00	7.00	-	-		
L212-80	L312-80	L412-80	L512-80		10.00	5		1.00	3.00	5.00	7.00	9.00	-		
L212-96	L312-96	L412-96	L512-96	12.00	6	1.00	3.00	5.00	7.00	9.00	11.00				
-	-	L416-24	L516-24	2.00	3.00	2	A	.50	2.50	-	-	-	-	1.00	-
L216-32	L316-32	L416-32	L516-32		4.00	2		1.00	3.00	-	-	-	-		
L216-40	L316-40	L416-40	L516-40		5.00	3		.50	2.50	4.50	-	-	-		
L216-48	L316-48	L416-48	L516-48		6.00	3		1.00	3.00	5.00	-	-	-		
L216-64	L316-64	L416-64	L516-64		8.00	4		1.00	3.00	5.00	7.00	-	-		
L216-80	L316-80	L416-80	L516-80		10.00	5		1.00	3.00	5.00	7.00	9.00	-		
L216-96	L316-96	L416-96	L516-96	12.00	6	1.00	3.00	5.00	7.00	9.00	11.00				
-	-	L420-24	L520-24	2.50	3.00	2	A	.50	2.50	-	-	-	-	1.25	-
L220-32	L320-32	L420-32	L520-32		4.00	2		1.00	3.00	-	-	-	-		
L220-40	L320-40	L420-40	L520-40		5.00	3		.50	2.50	4.50	-	-	-		
L220-48	L320-48	L420-48	L520-48		6.00	3		1.00	3.00	5.00	-	-	-		
L220-64	L320-64	L420-64	L520-64		8.00	4		1.00	3.00	5.00	7.00	-	-		
L220-80	L320-80	L420-80	L520-80		10.00	5		1.00	3.00	5.00	7.00	9.00	-		
L220-96	L320-96	L420-96	L520-96	12.00	6	1.00	3.00	5.00	7.00	9.00	11.00				
-	-	L424-24	L524-24	3.00	3.00	4	B	.50	2.50	-	-	-	-	0.50	2.50
L224-32	L324-32	L424-32	L524-32		4.00	4		1.00	3.00	-	-	-	-		
L224-40	L324-40	L424-40	L524-40		5.00	4		.50	4.50	-	-	-	-		
L224-48	L324-48	L424-48	L524-48		6.00	4	1.00	5.00	-	-	-	-			
L224-64	L324-64	L424-64	L524-64		8.00	6	C	1.00	3.00	5.00	-	-	7.00		
L224-80	L324-80	L424-80	L524-80		10.00	6	B	1.00	5.00	9.00	-	-	-		
L224-96	L324-96	L424-96	L524-96	12.00	8	C	1.00	3.00	5.00	7.00	9.00	11.00			
L232-32	L332-32	L432-32	L532-32	4.00	4.00	4	B	1.00	3.00	-	-	-	-	1.00	3.00
L232-40	L332-40	L432-40	L532-40		5.00	4		.50	4.50	-	-	-	-		
L232-48	L332-48	L432-48	L532-48		6.00	4		1.00	5.00	-	-	-	-		
L232-64	L332-64	L432-64	L532-64		8.00	6	C	1.00	3.00	5.00	-	-	7.00		
L232-80	L332-80	L432-80	L532-80		10.00	6	B	1.00	5.00	9.00	-	-	-		
L232-96	L332-96	L432-96	L532-96		12.00	8	C	1.00	3.00	5.00	7.00	9.00	11.00		

Mounting hole patterns for the above wear strips are noted on the following page.

WEAR STRIPS - IMPERIAL

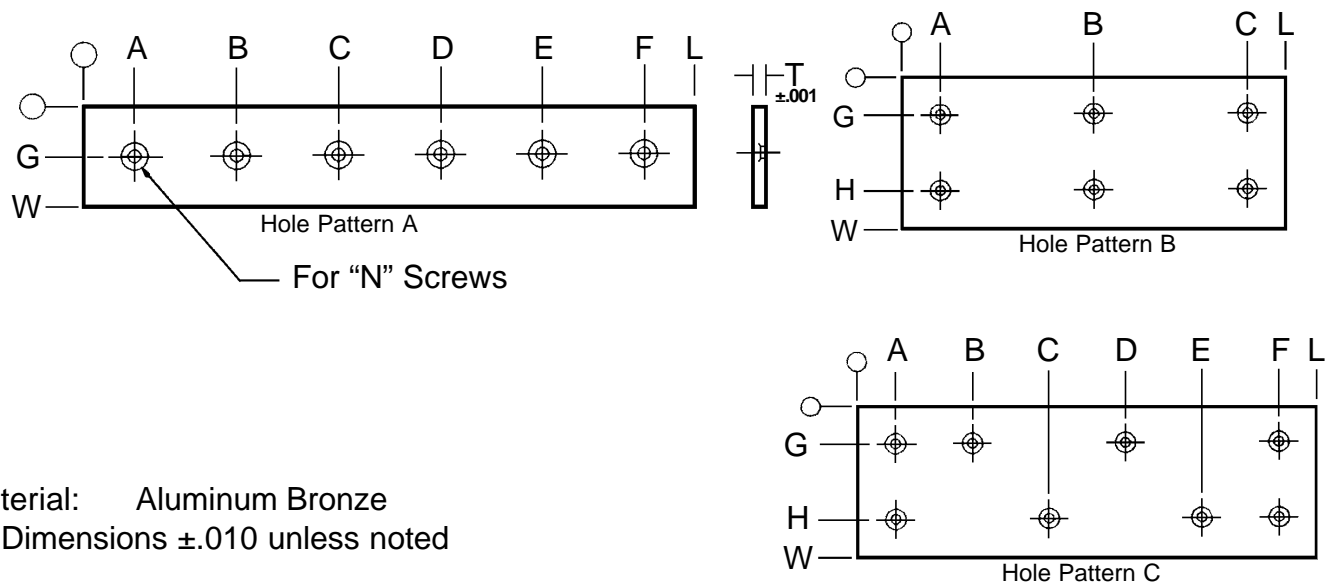
Solid Bronze with
Self-Lubricating Graphite Plugs



When ordering please indicate preference at the end of the part number.

G- Drilled with Graphite L212-32G
NG- Undrilled with graphite L212-32NG

MOUNTING HOLE PATTERNS FOR WEAR STRIPS



Material: Aluminum Bronze
All Dimensions $\pm .010$ unless noted

THICKNESS	N
1/4	1/4" Flat head screw
3/8	1/4" Socket head cap screw
1/2	5/16" Socket head cap screw
5/8	5/16" Socket head cap screw

Note: Width and length of wearstrip determines hole pattern, regardless of thickness.



Lamina has a full line of Mold Components... *in stock!*



- ✦ **Bronze Plated Guide & Ejector Bushings**
- ✦ **Steel Guide Bushings**
- ✦ **Self-Lubricating Guide & Ejector Bushings**
- ✦ **Leader Pins, and more...**



Die Springs for molds?

Of course!

Raymond Die Springs
are color coded.

INCH

- Blue = medium duty
- Red = medium heavy duty
- Gold = heavy duty
- Green = extra heavy duty

METRIC

- Green = light duty
- Blue = medium duty
- Red = heavy duty
- Yellow = extra heavy duty

Send for our latest die
spring catalogs today.

Lamina has a full stock of Raymond Inch
and Metric-ISO Springs.




Division of Anchor Lamina America, Inc.

PO Box 31, Royal Oak, Michigan 48068 • United States of America
 1-800-6-LAMINA • Fax: 248-542-8351 • E-mail: sales@lamina.com • www.anchorlamina.com

ANCHOR LAMINA COMPANIES

ANCHOR LAMINA INC WINDSOR, ONT CANADA 519-966-4431	ANCHOR LAMINA INC CAMBRIDGE, ONT CANADA 519-740-3060	ANCHOR LAMINA INC MISSISSAUGA, ONT CANADA 905-274-3448	ANCHOR LAMINA INC MONTREAL, QUE CANADA 514-525-5560	EOC NORMALIEN GmbH LUDENSCHIED GERMANY (02351) 437-0
ANCHOR LAMINA INC MADISON HEIGHTS, MI 800-543-3790	ANCHOR LAMINA INC KENTWOOD, MI 888-526-2467	ANCHOR LAMINA INC CINCINNATI, OH 800-543-3790	ANCHOR LAMINA INC NASHVILLE, TN 800-543-3790	ANCHOR LAMINA INC CHESHIRE, CT 800-950-3999

PREFERRED BUSINESS PARTNERS

AJACS DIE SALES GRAND RAPIDS, MI 800-968-6868	DAYNE SUPPLY ONTARIO, CA 800-289-6387	R F FLOOD SUPPLY IVYLAND, PA 800-235-9950	T R GOLDSMITH TONAWANDA, NY 800-252-2501	IPSCO ATTLEBORO, MA 800-229-4044
MESCO FLINT, MI 800-373-2173	MATIS, INC CHICAGO RIDGE, IL 708-425-7100	MATZKA, INC WARREN, MI 810-755-6363	SCOTT SPECIAL TOOLS CHESTERFIELD, MO 314-532-7277	E L SIMETH CO MILWAUKEE, WI 800-837-9270
STANDARD DIE SUPPLY INDIANAPOLIS, IN 800-622-4485		SUP-R-DIE CLEVELAND, OH 800-821-9194		