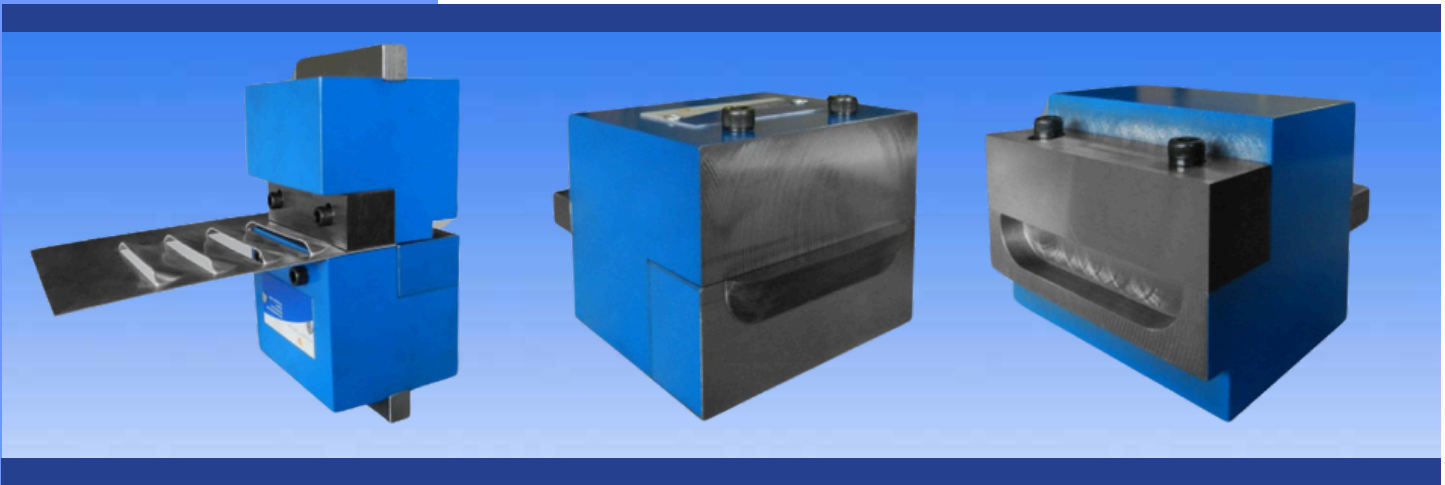




Tel: 604.521.6444
 Toll Free: 1.800.668.4996
 Email: Louvers@punchtools.com
 www.punchtools.com/louwer

Single Station Louver Tools



APPLICATIONS

- Custom car renovation
- Prototypes
- Vents
- Air cooling systems
- Metal doors
- Radiator covers
- Fireplace shields or screens

Now a quick and easy way to make louver's without the expense of complicated tooling.

Make one louver or create panels with multiples, **specific to you needs.**

Perfect for low volume production, prototyping, or custom car renovators.

Add the elegance and functionality of louvers to your next project with Punch Tools louver tool set.

Our standard unit is designed to a North American Style press brake and produce a louver 3"x5/8" at 1/4" high.

However other sizes are available with mounts to suit most other press brakes and presses.

Call Punch Tools today to order your Single Station Louver Tool.

In Stock Sizes	Prices
3"	\$850.00
4"	\$975.00
6"	\$1175.00



FEATURES AND BENEFITS

- Capacity up to 12GA stainless steel
- All cutting components manufactured from hardened tool steel.
- Cutting blade can be rotated four times before sharpening.
- Built in progression for a consistent and professional look.
- Replacement parts are available.
- 100% satisfaction guaranteed!

STANDARD SINGLE STATION LOUWER TOOL SIZES

Length	2"	3"	3 1/2"	4"	5"	6"	8"	10"
Width	1/2"	5/8"	5/8"	3/4"	3/4"	3/4"	3/4"	1"
Height	3/16"	1/4"	1/4"	5/16"	5/16"	5/16"	5/16"	1/2"
Spacing	3/4"	7/8"	7/8"	1 1/8"	1 1/8"	1 1/8"	1 1/8"	1 3/8"
Base	2.6"	3.6"	4.1"	4.6"	5.6"	6.6"	8 3/4"	10 3/4"



Visit www.punchtools.com/louwer for more info and a setup video or www.punchtools.com for other info.